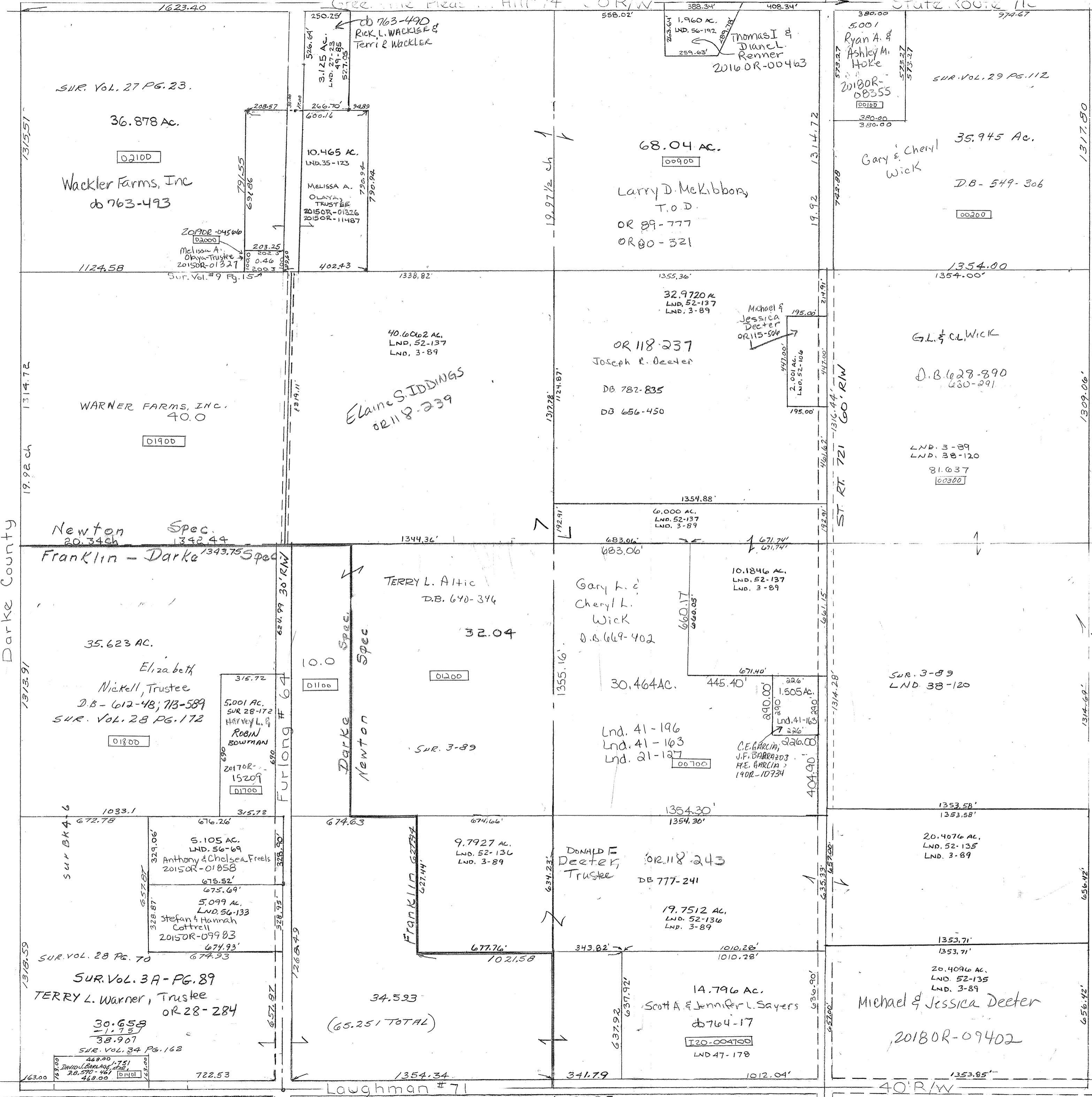


Lnd. 41-163 - NW Cor. SE QTR.
 Lnd. 41-196 - NW Cor. SE QTR.
 Lnd. 49-85 - CEN. PT. NW QTR.
 Lnd. 56-69 - SW PT. SW QTR.
 Lnd. 56-189 - NW PT. NE QTR.
 SURVEYS -
 Vol. 3 Pg. 89 Whole
 Vol. 4 Pg. 6 - W P P W 1/2
 Vol. 9 Pg. 15 - CEN PT NW
 Vol. 38 Pg. 120 PARTS N.E. 1/4 S.E. QUARTERS
 Vol. 47 Pg 178 S P4 SE QUARTER



SMDA NUMBER
 I30-NT026-1-1-1

