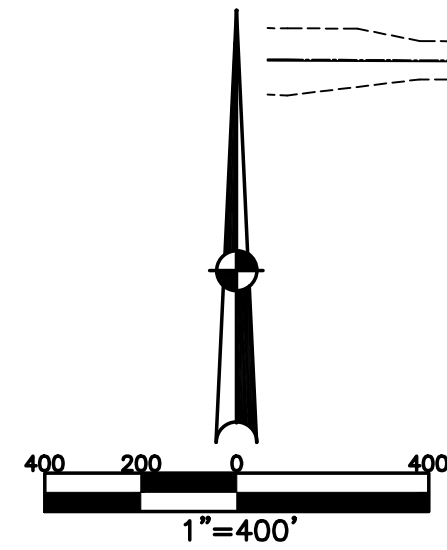


NEWTON TOWNSHIP
MIAMI COUNTY, OHIO

SECTION 20 TOWN 7 RANGE 5

PARCEL NUMBER
I20-_____

PLAT 23

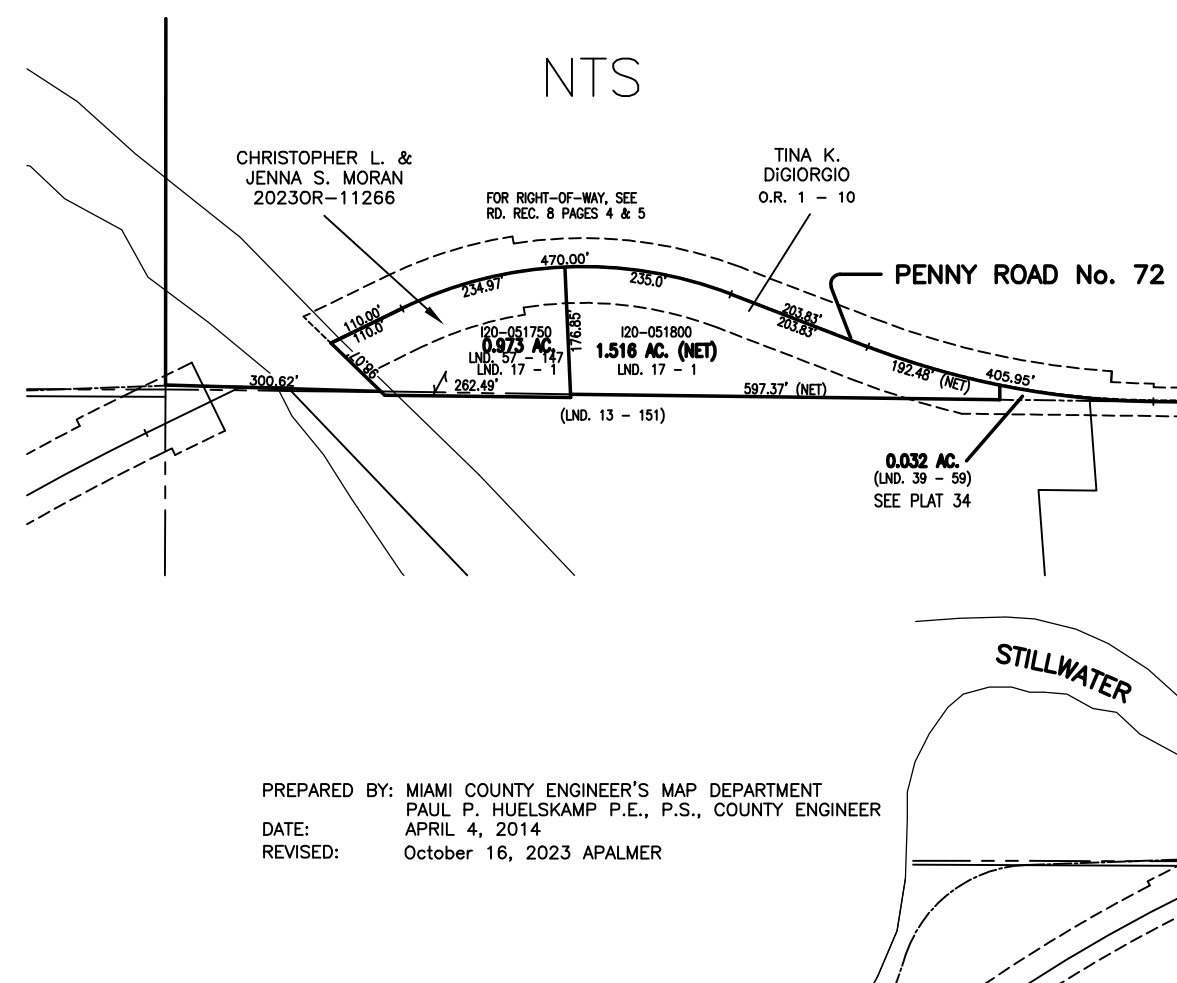


ABBREVIATION LEGEND

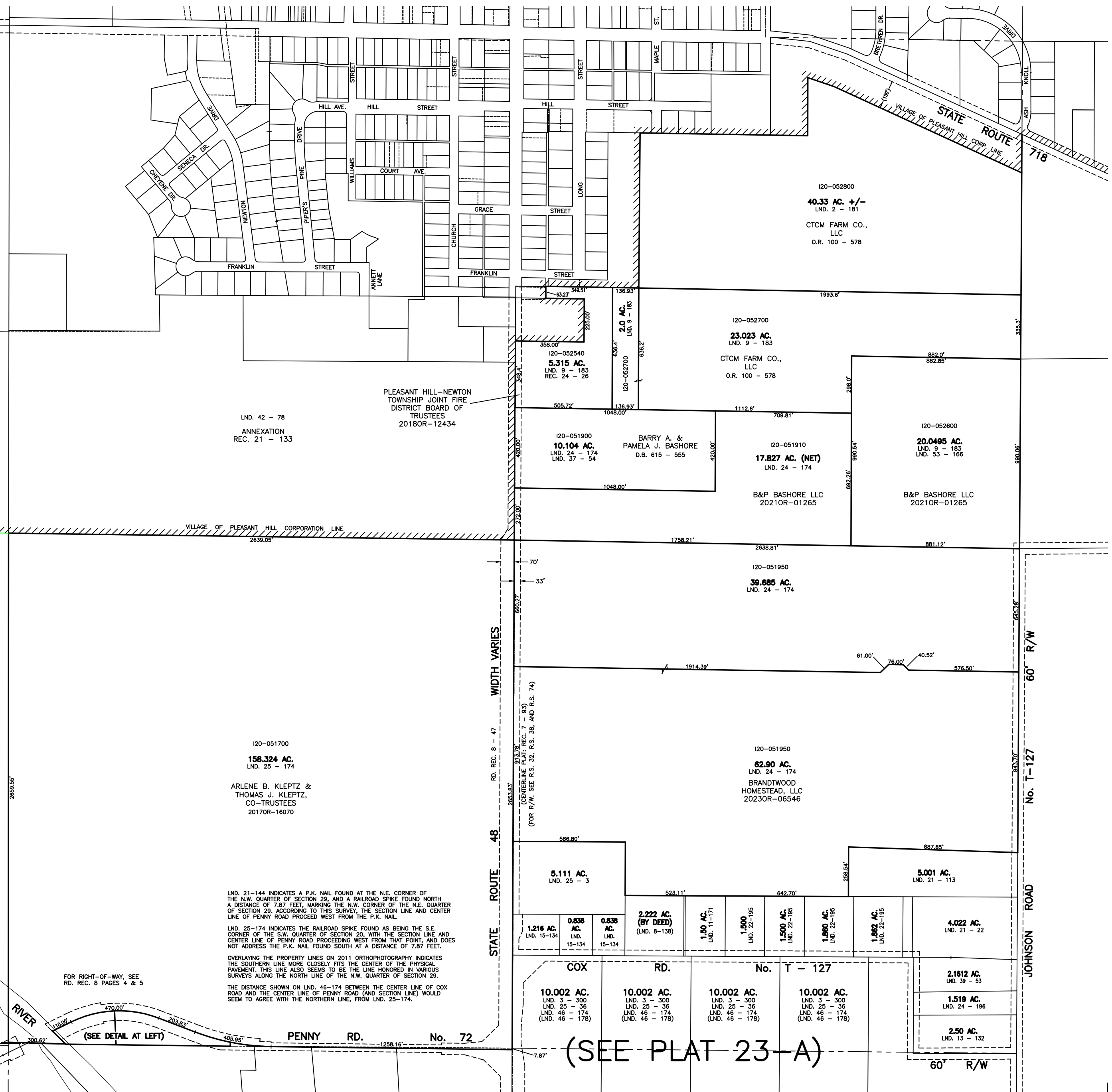
2014OR-07759 = RECORDER'S DOCUMENT NUMBER
 OR 406-509 = OFFICIAL RECORD 406 PAGE 509
 D.B. 613-172 = DEED BOOK 613, PAGE 172
 REC. 15-72 = RECORDER'S PLAT BOOK 15, PAGE 72
 LND. 33-15 = LAND SURVEY VOLUME 33, PAGE 15
 LOT 19-12 = LOT SURVEY VOLUME 19, PAGE 12
 R.R. 8-29 = ROAD RECORD VOLUME 8, PAGE 29
 R/W = RIGHT OF WAY
 C = CENTERLINE
 AC. = ACRES
 TWP. = TOWNSHIP
 TR. = TRACT
 IL = INLOT

SURVEY INDEX

NORTHWEST QUARTER		NORTHEAST QUARTER	
LND. 9 - 125	REC. 7 - 93	LND. 2 - 181	REC. 24 - 26
LND. 14 - 32	REC. 21 - 133	LND. 9 - 183	
LND. 42 - 78		LND. 24 - 174	
LND. 43 - 51		LND. 37 - 54	
LND. 52 - 50		LND. 53 - 168	
		LND. 54 - 190	
R.R. 8 - 47			
SOUTHWEST QUARTER		SOUTHEAST QUARTER	
LND. 13 - 151	REC. 7 - 93	LND. 3 - 300	REC. 7 - 93
LND. 17 - 1		LND. 8 - 136	
LND. 25 - 174		LND. 11 - 171	
LND. 30 - 59		LND. 13 - 132	
LND. 39 - 94		LND. 15 - 134	
LND. 57-147		LND. 21 - 22	
		LND. 21 - 113	
		LND. 22 - 195	
		LND. 24 - 174	
		LND. 24 - 196	
		LND. 25 - 3	
		LND. 25 - 36	
		LND. 39 - 53	
		LND. 46 - 174	
		LND. 46 - 178	
R.R. 8 - 4			
R.R. 8 - 5			
R.R. 8 - 47			



PREPARED BY: MIAMI COUNTY ENGINEER'S MAP DEPARTMENT
 PAUL P. HUELSKAMP P.E., P.S., COUNTY ENGINEER
 DATE: APRIL 4, 2014
 REVISED: October 16, 2023 APALMER



(SEE PLAT 23 - A)