

NEWTON TWP.

MIAMI COUNTY, OHIO

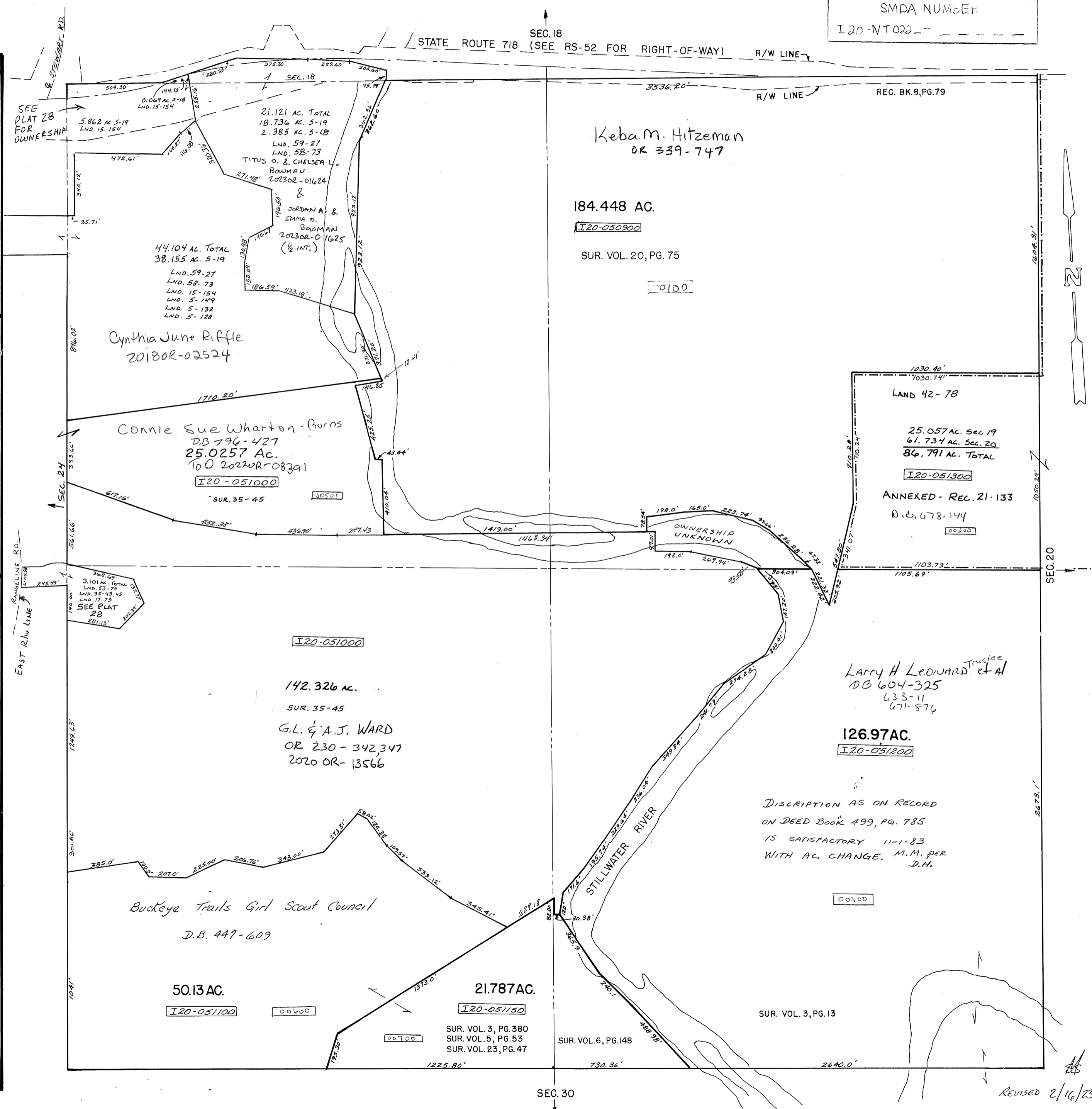
PLAT 22

Section 19, Town 7, Range 5

SCALE: 1" = 400'

SMDA NUMBER
I 20-NT 022

SURVEYS	
SUR. VOL. 3, PG. 13 SUR. VOL. 5, PG. 53 SUR. VOL. 6, PG. 148 SUR. VOL. 20, PG. 75 SUR. VOL. 23, PG. 47 LND. 35-45	S.E. QUARTER
SUR. VOL. 20, PG. 75 LND. VOL. 42, PG. 78 LND. 35-45	N.E. QUARTER REC. BK. 8, PG. 79 REC. BK. 21, PG. 133
SUR. VOL. 3, PG. 380 SUR. VOL. 4, PG. 454 SUR. VOL. 6, PG. 148 SUR. VOL. 20, PG. 75 SUR. VOL. 23, PG. 47 SUR. VOL. 35, PG. 45 LND. 53-75	S.W. QUARTER LND. 5-53
SUR. VOL. 5, PG. 128 SUR. VOL. 5, PG. 132 SUR. VOL. 5, PG. 149 SUR. VOL. 15, PG. 154 LND. 35-45 LND. 53-75 LND. 58-73 LND. 59-77	N.W. QUARTER REC. BK. 8, PG. 79



REVISED 2/16/23