

# NEWTON TWP.

MIAMI COUNTY, OHIO

# PLAT 21-A

Section 18, Town 7, Range 5

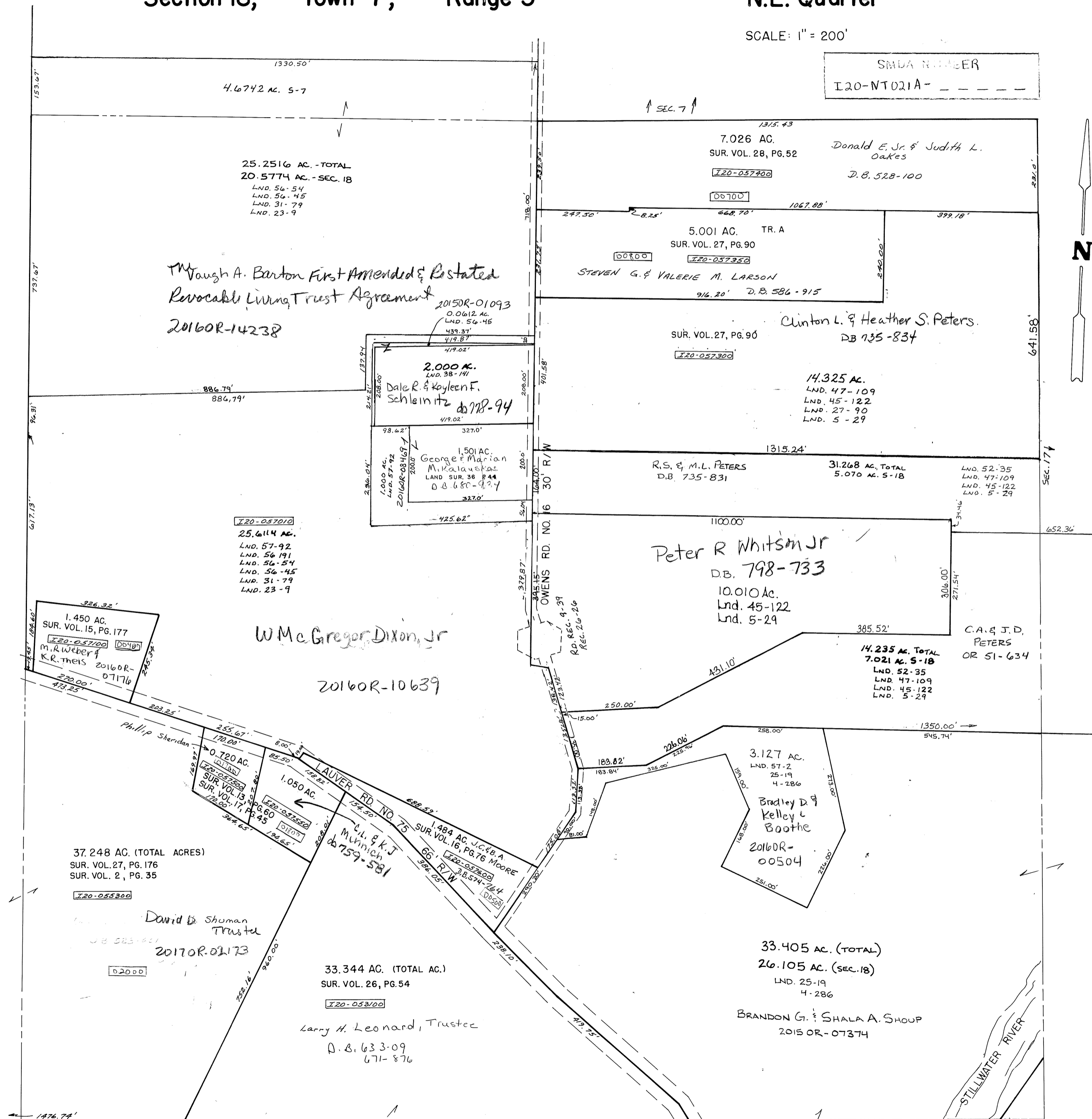
N.E. Quarter

SCALE: 1" = 200'

### SURVEYS

- SUR. VOL. 4, PG. 286
- SUR. VOL. 5, PG. 29
- SUR. VOL. 13, PG. 60
- SUR. VOL. 15, PG. 177
- SUR. VOL. 16, PG. 76
- SUR. VOL. 17, PG. 45
- SUR. VOL. 23, PG. 9
- SUR. VOL. 25, PG. 19
- SUR. VOL. 26, PG. 54
- SUR. VOL. 27, PG. 90
- SUR. VOL. 27, PG. 176
- SUR. VOL. 28, PG. 52
- SUR. VOL. 31, PG. 79
- SUR. Vol. 36, Pg 44
- Lnd. 45-122
- Lnd. 47-109
- LND. 52-35
- LND. 56-45
- LND. 56-54
- LND. 56-191
- LND. 57-2
- LND. 57-92
- R.D. REC. 9-39, REC. 26-26

SMDA NUMBER  
I20-NT021A-



4.6742 AC. S-7  
25.2516 AC. - TOTAL  
20.5774 AC. - SEC. 18  
LND. 56-54  
LND. 56-45  
LND. 31-79  
LND. 23-9

7.026 AC.  
SUR. VOL. 28, PG. 52  
Donald E. Sr. & Judith L. Oakes  
D.B. 528-100  
5.001 AC. TR. A  
SUR. VOL. 27, PG. 90  
STEVEN G. & VALERIE M. LARSON  
D.B. 584-915

Clinton L. & Heather S. Peters.  
DB 735-834  
14.325 AC.  
LND. 47-109  
LND. 45-122  
LND. 27-90  
LND. 5-29

2015OR-01093  
0.0612 AC.  
LND. 56-45  
439.37'  
419.87'  
2.000 AC.  
LND. 38-141  
Dale R. & Koyleen F. Schleinitz  
db 778-94  
1.501 AC.  
George & Marian Mikalautas  
LAND SUR. 36 P. 44  
D.B. 680-927  
327.0'

25.6114 AC.  
LND. 57-92  
LND. 56-191  
LND. 56-54  
LND. 56-45  
LND. 31-79  
LND. 23-9

1.450 AC.  
SUR. VOL. 15, PG. 177  
M. R. Weber & K. R. Theis  
2016OR-07176

W. McGregor Dixon, Jr.  
2016OR-10639

Peter R. Whitsam Jr.  
D.B. 798-733  
10.010 AC.  
Lnd. 45-122  
Lnd. 5-29

14.235 AC. TOTAL  
7.021 AC. S-18  
LND. 52-35  
LND. 47-109  
LND. 45-122  
LND. 5-29  
C.A. & J.D. PETERS  
OR 51-634

37.248 AC. (TOTAL ACRES)  
SUR. VOL. 27, PG. 176  
SUR. VOL. 2, PG. 35

David B. Shuman Trustee  
DB 523-807  
2017OR-02173

33.344 AC. (TOTAL AC.)  
SUR. VOL. 26, PG. 54

Larry H. Leonard, Trustee  
D.B. 633-09  
671-876

33.405 AC. (TOTAL)  
26.105 AC. (SEC. 18)  
LND. 25-19  
4-286

BRANDON G. & SHALA A. SHOUP  
2015OR-07374

