

NEWTON TWP.

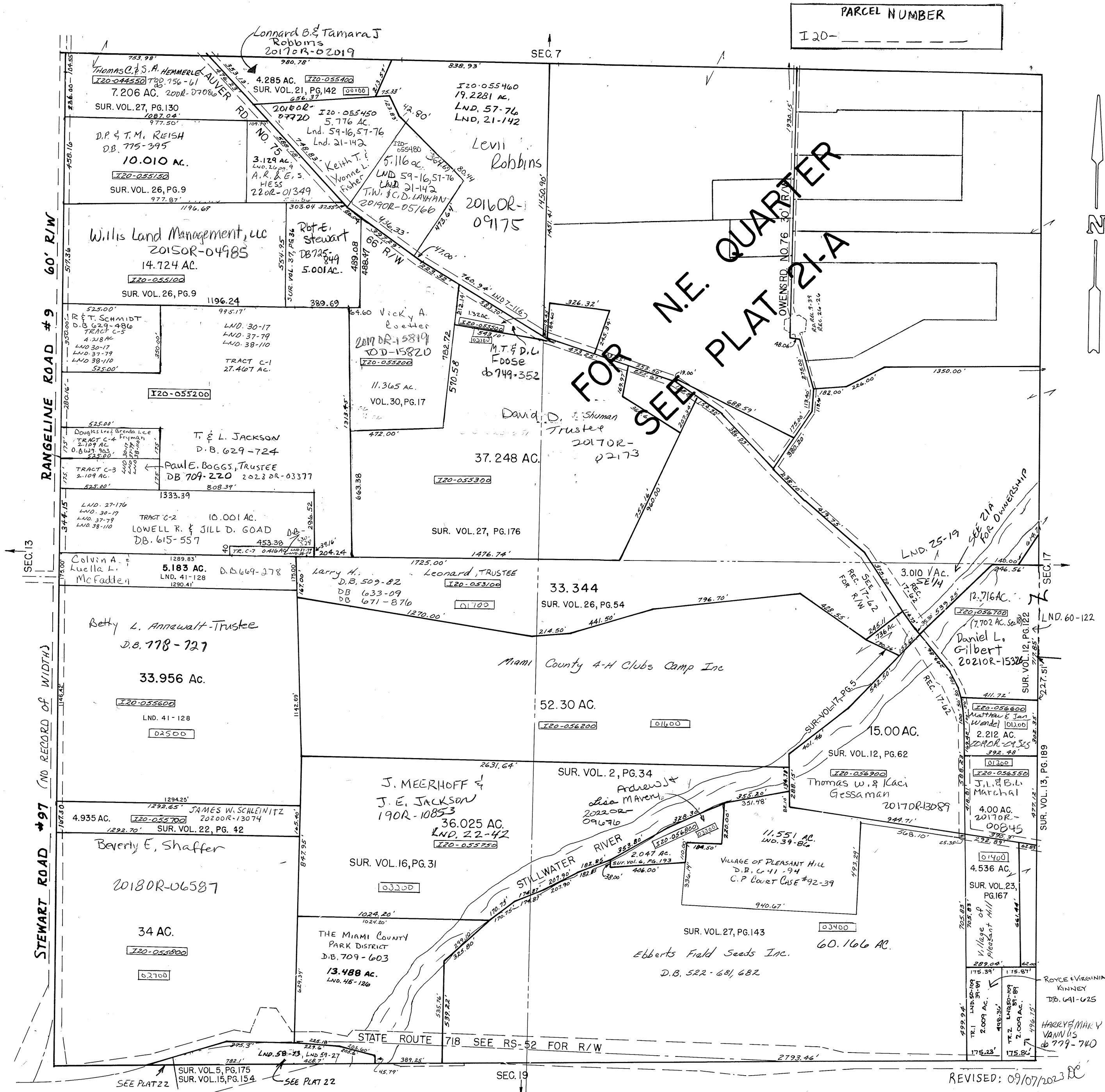
MIAMI COUNTY, OHIO

PLAT 21

Section 18, Town 7, Range 5

SCALE: 1" = 400'

SURVEYS	
S.E. QUARTER	<p>SUR. VOL. 2, PG. 34 SUR. VOL. 6, PG. 193 SUR. VOL. 12, PG. 62 SUR. VOL. 12, PG. 122 SUR. VOL. 13, PG. 189 SUR. VOL. 16, PG. 31 SUR. VOL. 17, PG. 5 SUR. VOL. 22, PG. 42 SUR. VOL. 23, PG. 167 SUR. VOL. 26, PG. 54 SUR. VOL. 27, PG. 143 LND. 50-109 LND. 60-122</p>
N.E. QUARTER	<p>SUR. VOL. 4, PG. 286 SUR. VOL. 5, PG. 29 SUR. VOL. 13, PG. 60 SUR. VOL. 15, PG. 177 SUR. VOL. 16, PG. 76 SUR. VOL. 17, PG. 45 SUR. VOL. 23, PG. 9 SUR. VOL. 25, PG. 19 SUR. VOL. 26, PG. 54 SUR. VOL. 27, PG. 90 SUR. VOL. 27, PG. 176 SUR. VOL. 28, PG. 52 SUR. VOL. 31, PG. 79 LND. 45-122</p>
S.W. QUARTER	<p>SUR. VOL. 5, PG. 175 SUR. VOL. 15, PG. 154 SUR. VOL. 16, PG. 31 SUR. VOL. 22, PG. 42 SUR. VOL. 26, PG. 54 SUR. VOL. 27, PG. 143 LND. 41-128 LND. 45-126 LND. 58-73 LND. 59-27</p>
N.W. QUARTER	<p>SUR. VOL. 2, PG. 35 SUR. VOL. 7, PG. 116 SUR. VOL. 21, PG. 142 SUR. VOL. 26, PG. 9 SUR. VOL. 27, PG. 130 SUR. VOL. 27, PG. 176 SUR. VOL. 30, PG. 17 SUR. VOL. 31, PG. 95 SUR. VOL. 37, PG. 36 SUR. VOL. 37, PG. 79 LND. 38-110 LND. 57-76 LND. 59-16</p>



REVISED: 09/07/2023