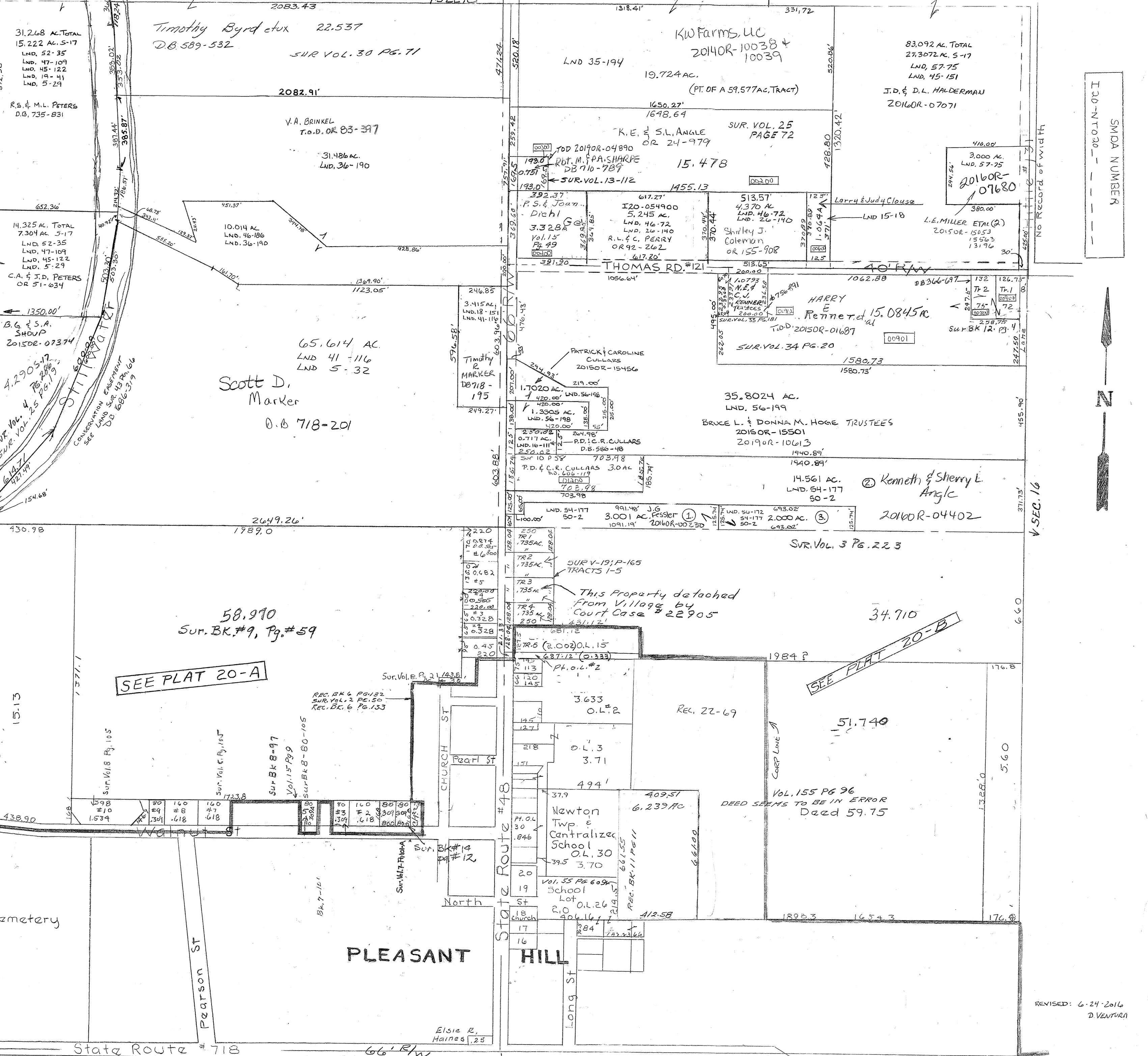


- Vol. 46-72 Cont. Pt. NE Qtr.
- Vol. 47-109 NW Pt. NW Qtr.
- Vol. 132 - Annexation
- Vol. 13 - 112 - W. Cent. Pt. NE
- Vol. 14 - 12 - E. Cent. Pt. SW
- Vol. 15 - 18 - N. Cent. Pt. NE
- Vol. 15 - 49 - W. Cent. Pt. NE
- Vol. 16 - 111 - S.W. Pt. N.E.
- Vol. 18 - 151 - E. Cent. Pt. NW
- Vol. 45-122 NW Pt. NW Qtr.
- Vol. 45-191 NE Cor. NE Qtr.
- Vol. 191 - Pleasant Hill
- Vol. 19 - E. Cent. Pt. SW
- Vol. 80 - Cent. Pt. SW
- Vol. 97 - Cent. Pt. SW
- Vol. 105 - N. Pt. SW
- Vol. 109 - S.W. Pt. NE
- Vol. 110 - E. Cent. Pt. NE
- Vol. 112 - E. Cent. Pt. NE
- Vol. 19 - E. Cent. Pt. SW
- Vol. 80 - Cent. Pt. SW
- Vol. 97 - Cent. Pt. SW
- Vol. 105 - N. Pt. SW
- Vol. 109 - S.W. Pt. NE
- Vol. 110 - E. Cent. Pt. NE
- Vol. 112 - E. Cent. Pt. NE
- Vol. 3 - Pg. 50
- Vol. 3 - Pg. 223
- Vol. 4 - Pg. 286
- Vol. 5 - Pg. 289
- Vol. 5 - Pg. 322
- Vol. 5 - Pg. 45
- Vol. 7 - Pg. 101A
- Vol. 7 - Pg. 101
- SW Qtr. E 1/2 Sec.
- W. Pt. NW
- W. Cent. Pt. NW
- W. Cent. Pt. SW
- NE Pt. SW
- Cent. Pt. SW
- Cent. Pt. SW



SEE PLAT 20-A

SEE PLAT 20-B

SMDA NUMBER I 20-N 7020

