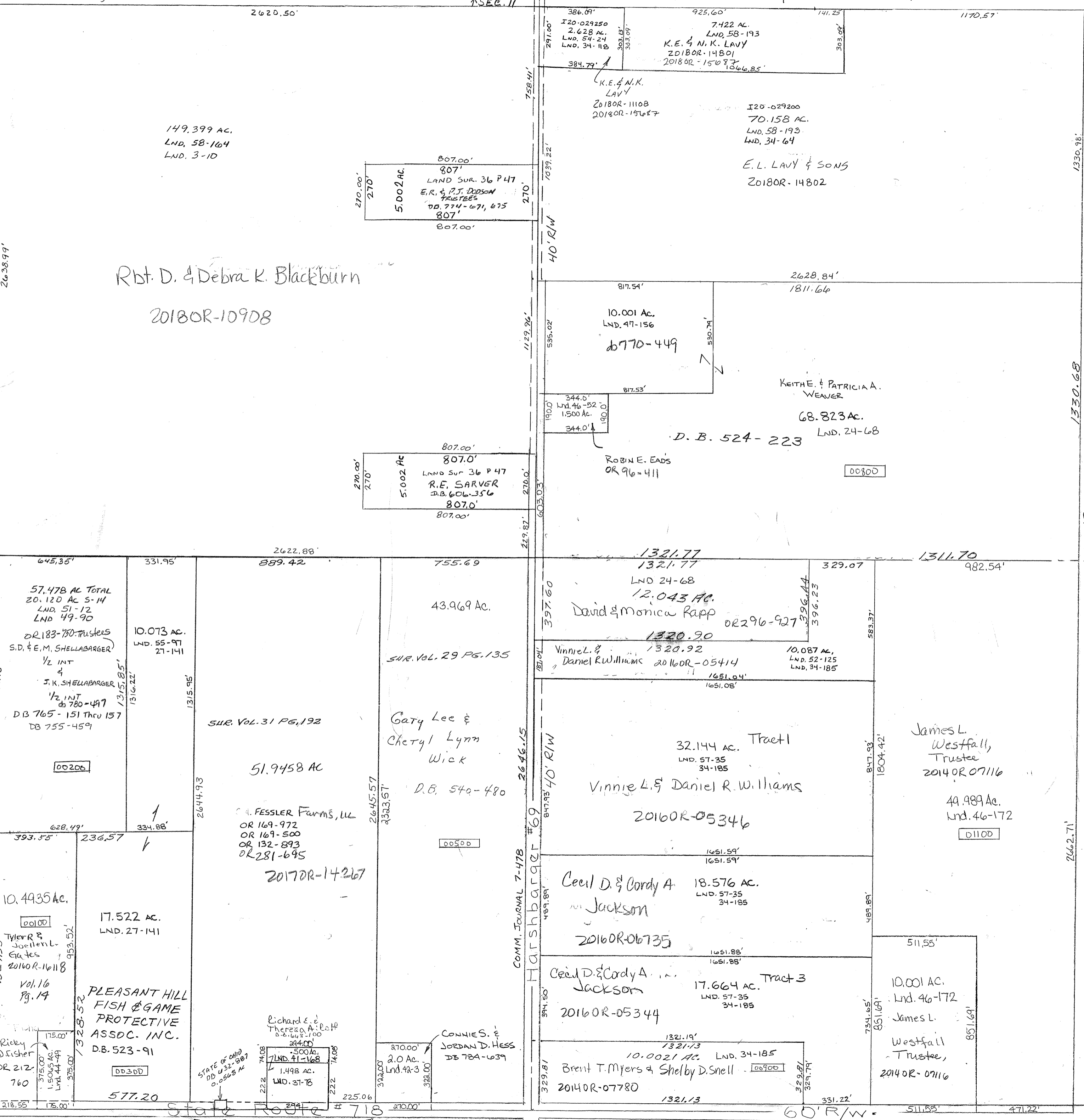


SMDA NUMBER  
120-N-1016



Surveys -  
Vol. 3 Pg. 10 - Whole Sec.  
Vol. 16 Pg. 17 - S.W. Pt. S.W.  
Vol. 36 Pg. 47 - N.W. 1/4  
LND. 41-168 - S. Cont. Pt. S.W. Qtr.  
LND. 37-78 - S. Cont. Pt. S.W. Qtr.  
LND. 48-3 S.E. Cor. S.W. Qtr.  
LND. 44-44 SW Cor SW Qtr.

SEE NOTE ON LAND SUR. 49-90  
18 Lane Not in deeds Prior To 2005 & DB 765-151

Rbt. D. & Debra K. Blackburn  
20180R-10908

57,478 AC TOTAL  
20,120 AC S-14  
LND. 51-12  
LND. 49-90  
OR 183-750 Trustee  
S.D. & E.M. SHELLABARGER  
1/2 INT  
&  
J. K. SHELLABARGER  
1/2 INT  
DB 780-497  
DB 765-151 Thru 157  
DB 755-459

51.9458 AC  
SUR. Vol. 31 Pg. 192  
Gaty Lee & Cheryl Lynn Wick  
D.B. 540-480  
FESSLER FARMS, LLC  
OR 169-972  
OR 169-500  
OR 132-893  
OR 281-695  
2017DR-14267

12.043 AC.  
David & Monica Rapp  
OR 296-927  
Vinnie L. & Daniel R. Williams  
2016OR-05414  
10.087 AC.  
LND. 52-125  
LND. 34-185

32.144 AC. Tract 1  
LND. 57-35  
34-185  
Vinnie L. & Daniel R. Williams  
2016OR-05346

18.576 AC.  
LND. 57-35  
34-185  
Cecil D. & Cordy A. Jackson  
2016OR-06735

17.664 AC. Tract 3  
LND. 57-35  
34-185  
Cecil D. & Cordy A. Jackson  
2016OR-05344

10.001 AC. LND. 34-185  
Brent T. Myers & Shelby D. Snell  
2014OR-07780

49,989 AC.  
Lnd. 46-172  
James L. Westfall, Trustee  
2014 OR 07116  
01100

10.001 AC.  
Lnd. 46-172  
James L. Westfall, Trustee  
2014OR-07116

State Route # 718  
RS 102 889.17

SEC. 23

REVISED 12-11-2018  
D. VENTURA