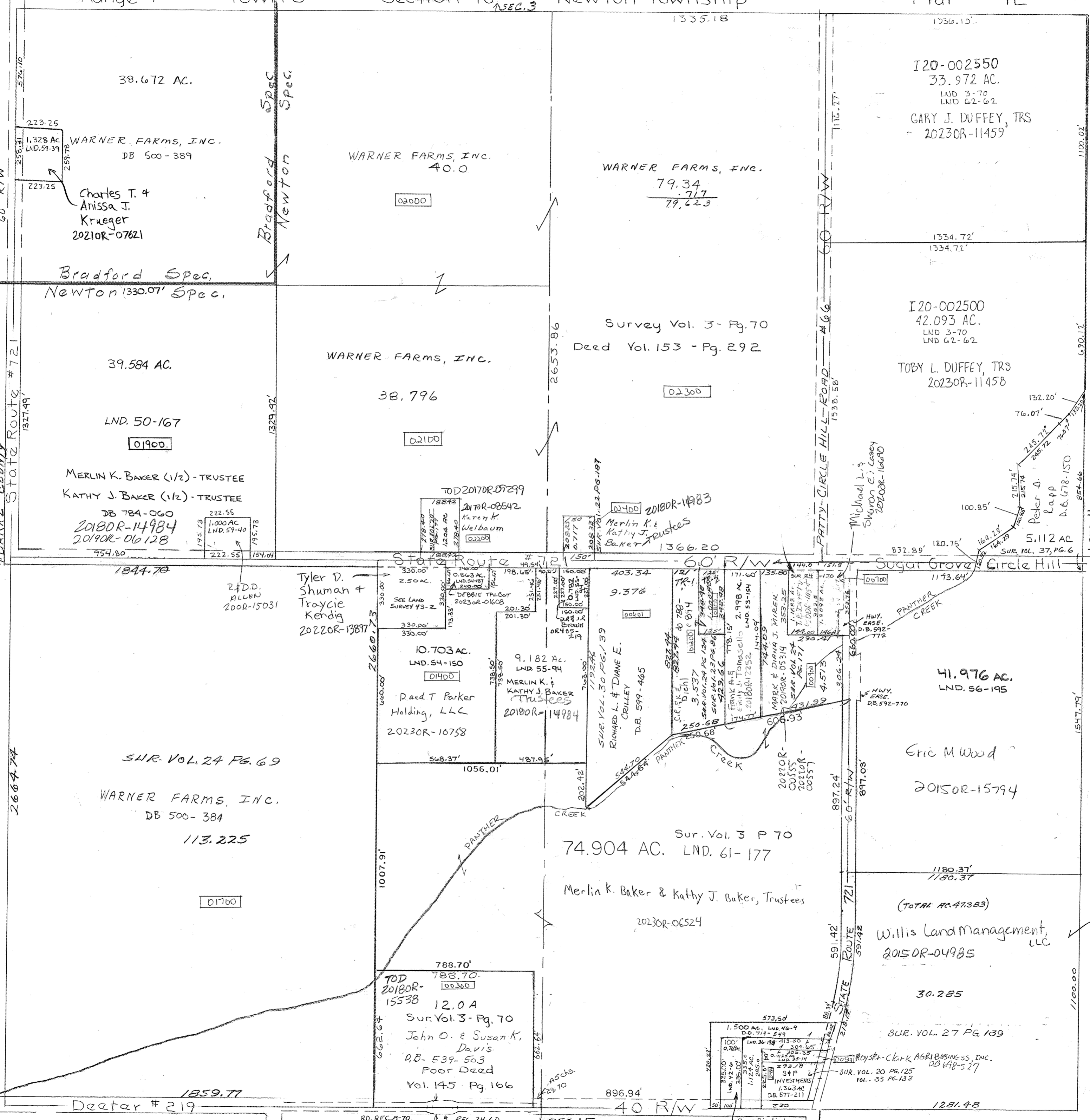


Survey =
 Vol. 2 Pg. 101 - Whole
 Vol. 3 Pg. 70 - NE QTR. NW 1/4 SE 1/4 E P 1/2 SW
 Vol. 20 Pg. 125 S. Cen SE QTR.
 Vol. 37, Pg. 6 - NE 1/4
 Lnd. 43-2 NE Pt. of SW QTR.
 Lnd. 50-167 SW Pt. of NW QTR.
 Lnd. 56-195 NE Pt. of SE QTR.
 Lnd. 62-62 NE QTR.

Lnd. 43-2 NE Pt. of SW QTR.
 Lnd. 50-167 SW Pt. of NW QTR.
 Lnd. 56-195 NE Pt. of SE QTR.
 Lnd. 62-62 NE QTR.

ADARKE COUNTY
 State Route #721
 1327.49'

See Road Record
 BK 8 Pg 70 - Deeter Road



PARCEL NUMBER
 I20-002550

