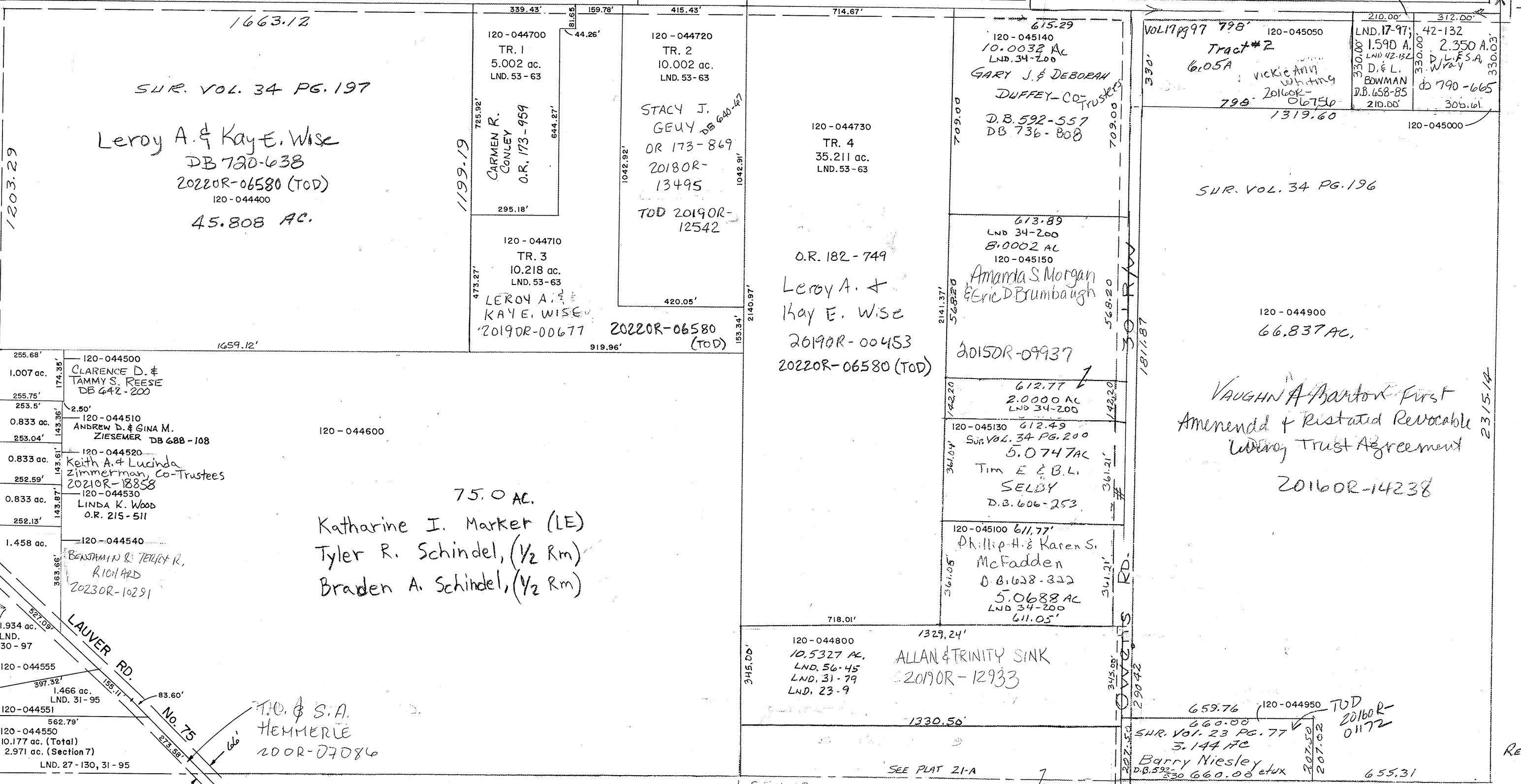
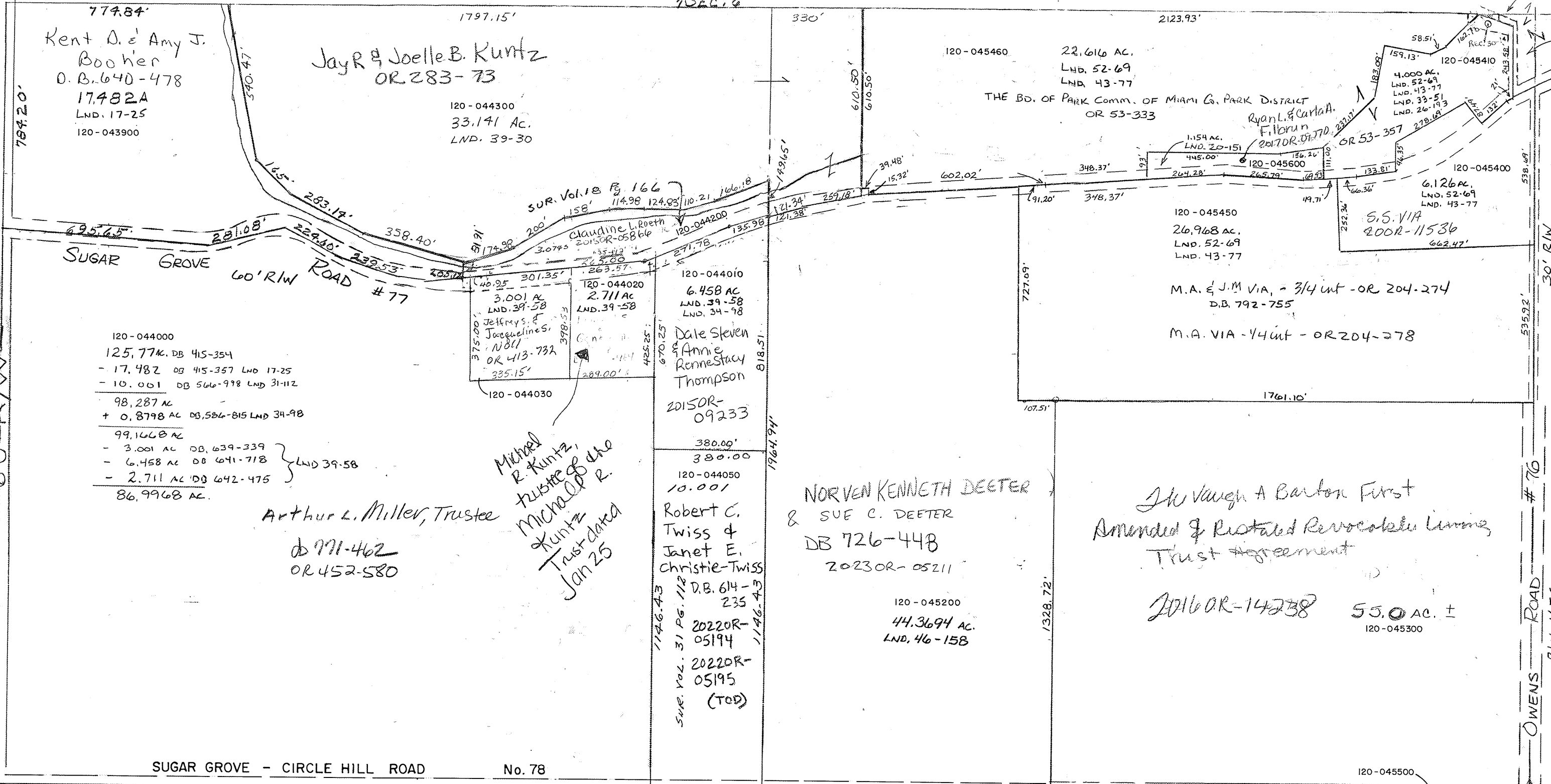


26-193 NE 1/4
LND. 53-51 NE 1/4
LND. 34-98 NW 1/4
LND. 39-30 NW 1/4 & NE 1/4
LND. 39-58 NW 1/4
LND. 43-77 NE 1/4
LND. 53-43 SW 1/4

SURVEYS:
Vol. 11 Pg. 75 - W Pt SW
Vol. 11 Pg. 114 - W Pt SW
Vol. 17 Pg. 25 - N.W. COR. NW 1/4
Vol. 17 Pg. 97 - N.E. COR. S.E.



TOD 2018OR-05345
David B. & Jennifer S. Messler
2017OR-13500

CRAIG A. & PAMELA S. DENLINGER
DB 775-320

T.O. & S.A. HEMMERLE
200R-07086

TOD 2016OR-01172
Barry Niesley
DB 533-330 660.00 dux
2017OR-20702