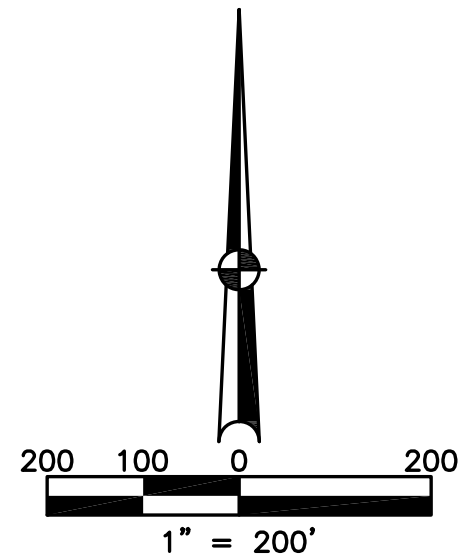


NEWTON TOWNSHIP
MIAMI COUNTY, OHIO

SECTION 5 TOWN 7 RANGE 5
NORTHWEST QUARTER

PARCEL NUMBER
I20-_____

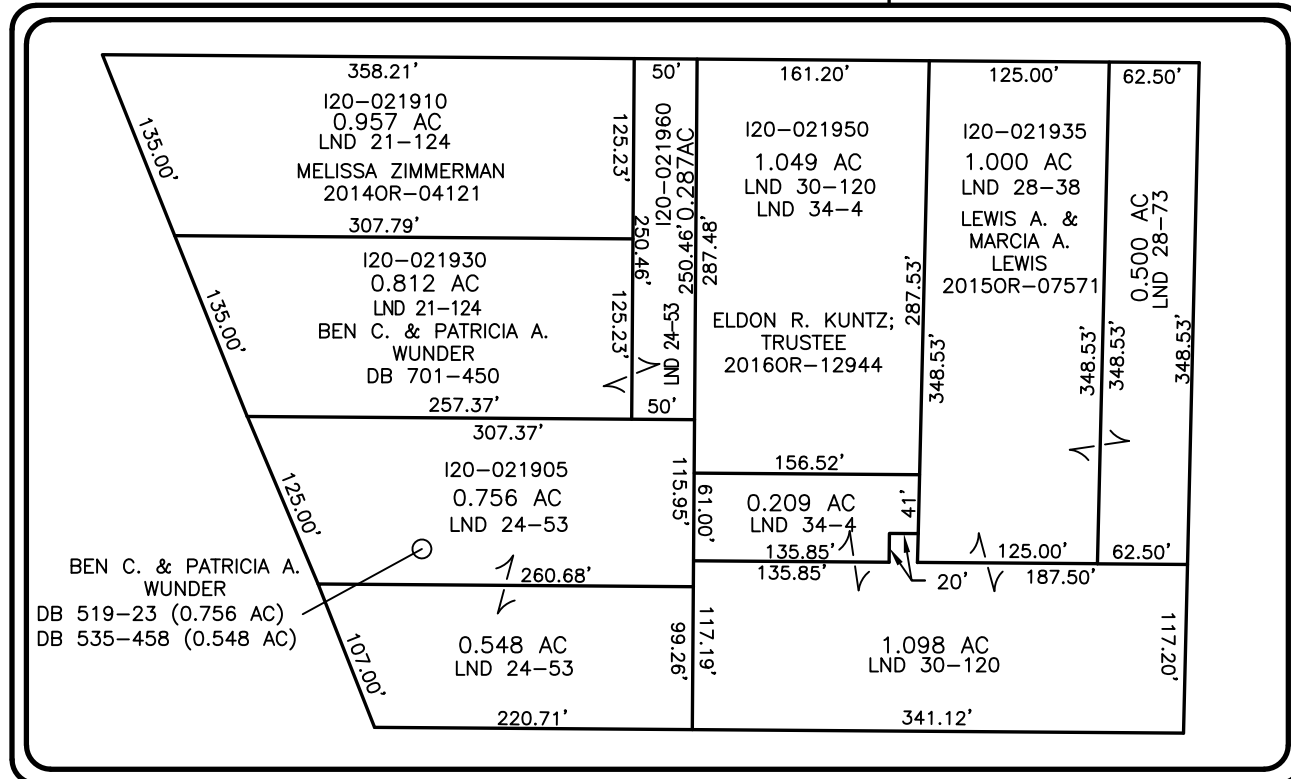
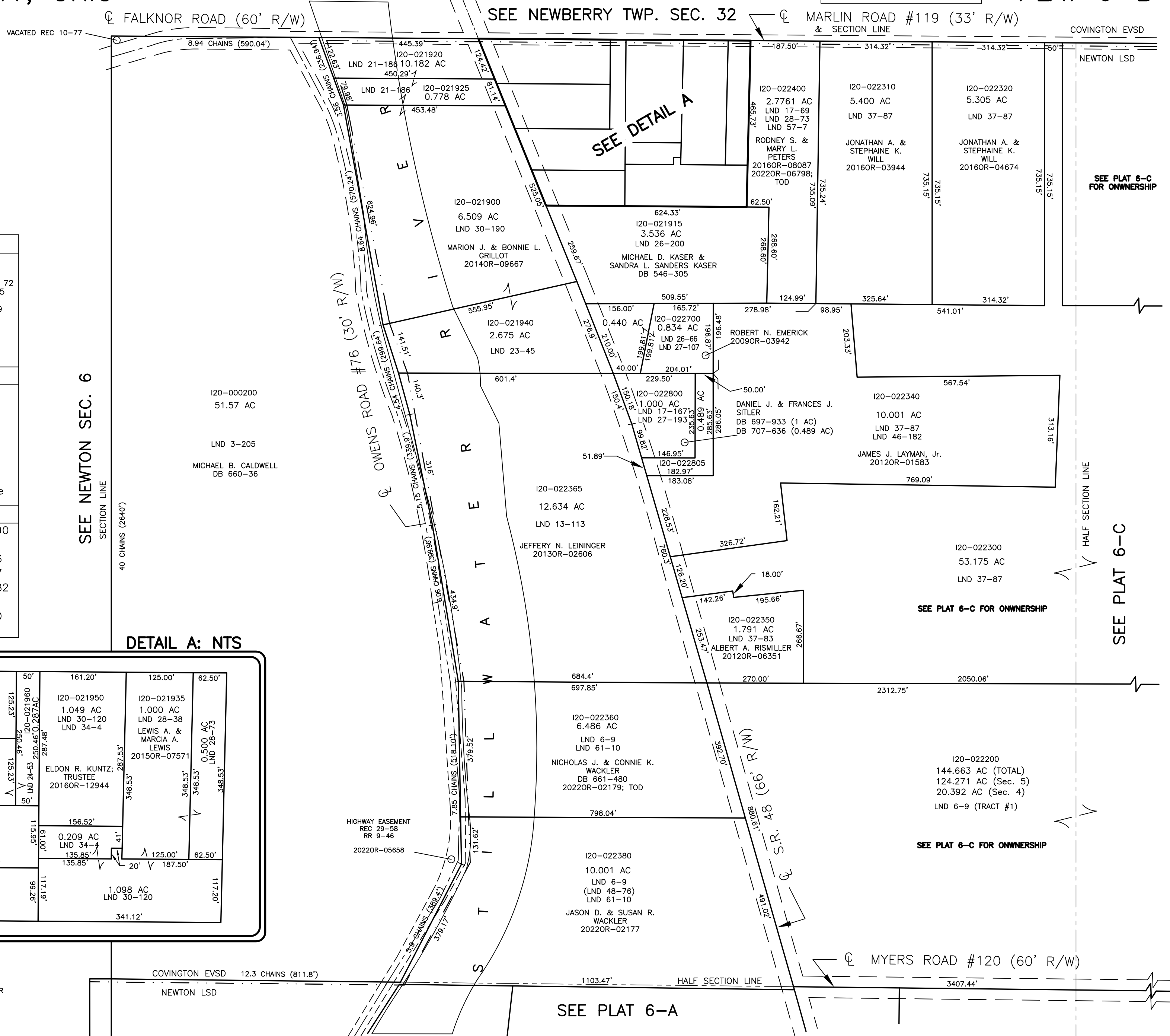
PLAT 6-B



ABBREVIATION LEGEND		
2014OR-00759	=	RECORDER'S DOCUMENT NUMBER
OR 406-509	=	OFFICIAL RECORD 406 PAGE 509
D.B. 613-172	=	DEED BOOK 613, PAGE 172
REC. 15-72	=	RECORDER'S PLAT BOOK 15, PAGE 72
LND. 33-15	=	LAND SURVEY VOLUME 33, PAGE 15
LOT 19-12	=	LOT SURVEY VOLUME 19, PAGE 12
R.R. 8-29	=	ROAD RECORD VOLUME 8, PAGE 29
R/W	=	RIGHT OF WAY
CL	=	CENTERLINE
AC.	=	ACRES
TWP.	=	TOWNSHIP
TR.	=	TRACT
#	=	LOT

LINE LEGEND		
	=	Blow-up Boundary
	=	Property Line
	=	Lot Split Line
	=	Section Line
	=	Centerline
	=	Right-of-Way Line
	=	School District Line

SURVEY INDEX		
LND 3-205	LND 24-53	LND 30-190
LND 6-9	LND 26-66	LND 34-4
LND 13-113	LND 26-200	LND 37-83
LND 17-69	LND 27-107	LND 37-87
LND 17-167	LND 27-193	LND 46-182
LND 21-124	LND 28-38	LND 57-7
LND 21-186	LND 28-73	LND 61-10
LND 23-45	LND 30-120	



PREPARED BY: MIAMI COUNTY ENGINEER'S MAP DEPARTMENT
PAUL P. HUELSKAMP, P.E., P.S., COUNTY ENGINEER
DATE: May 10, 2022 MST/ARMS
REVISED: Sep. 07, 2023 MST/ARMS

SEE PLAT 6-A

SEE PLAT 6-C FOR OWNERSHIP

SEE PLAT 6-C

SEE PLAT 6-C FOR OWNERSHIP

SEE PLAT 6-C FOR OWNERSHIP