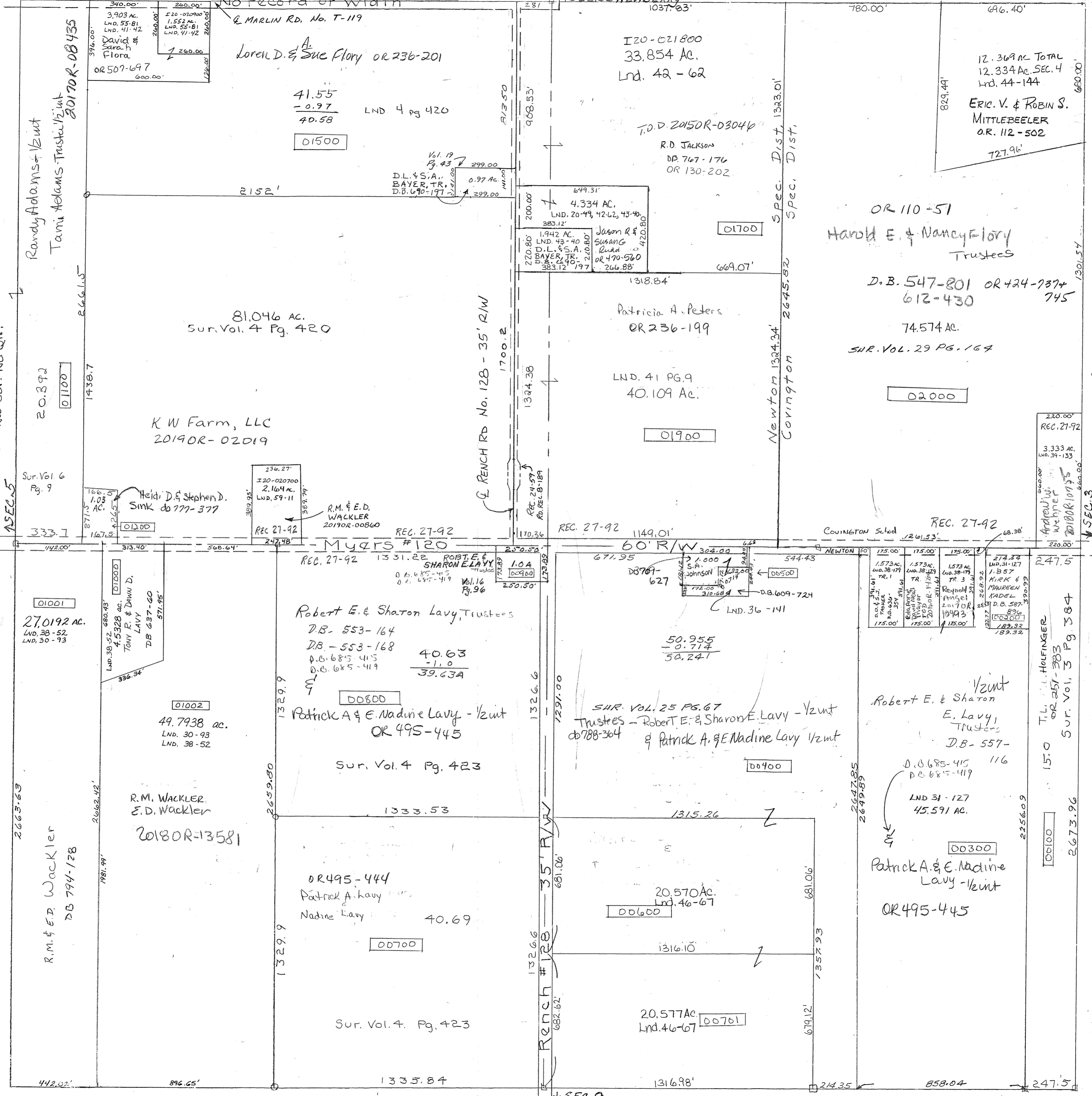


Surveys:
 Vol. 3 Pg. 304 - E of SE
 Vol. 4 Pg. 423 - E of SW
 Vol. 4 Pg. 420 - S of NW
 Vol. 6 Pg. 96 - W of NW
 Vol. 16 Pg. 96 - N.E. Cor. S.W.
 LND 41-9 - SW COR. NE & SE COR. NW
 LND 42-62 - NW COR. NE QTR.



SMDA NUMBER
 IAO-N1006

GALLAMAR DITCH
 EASEMENTS
 REC. 27-92

REVISED 2-8-2019
 D. VENTURA
 9-17-2019 DGS