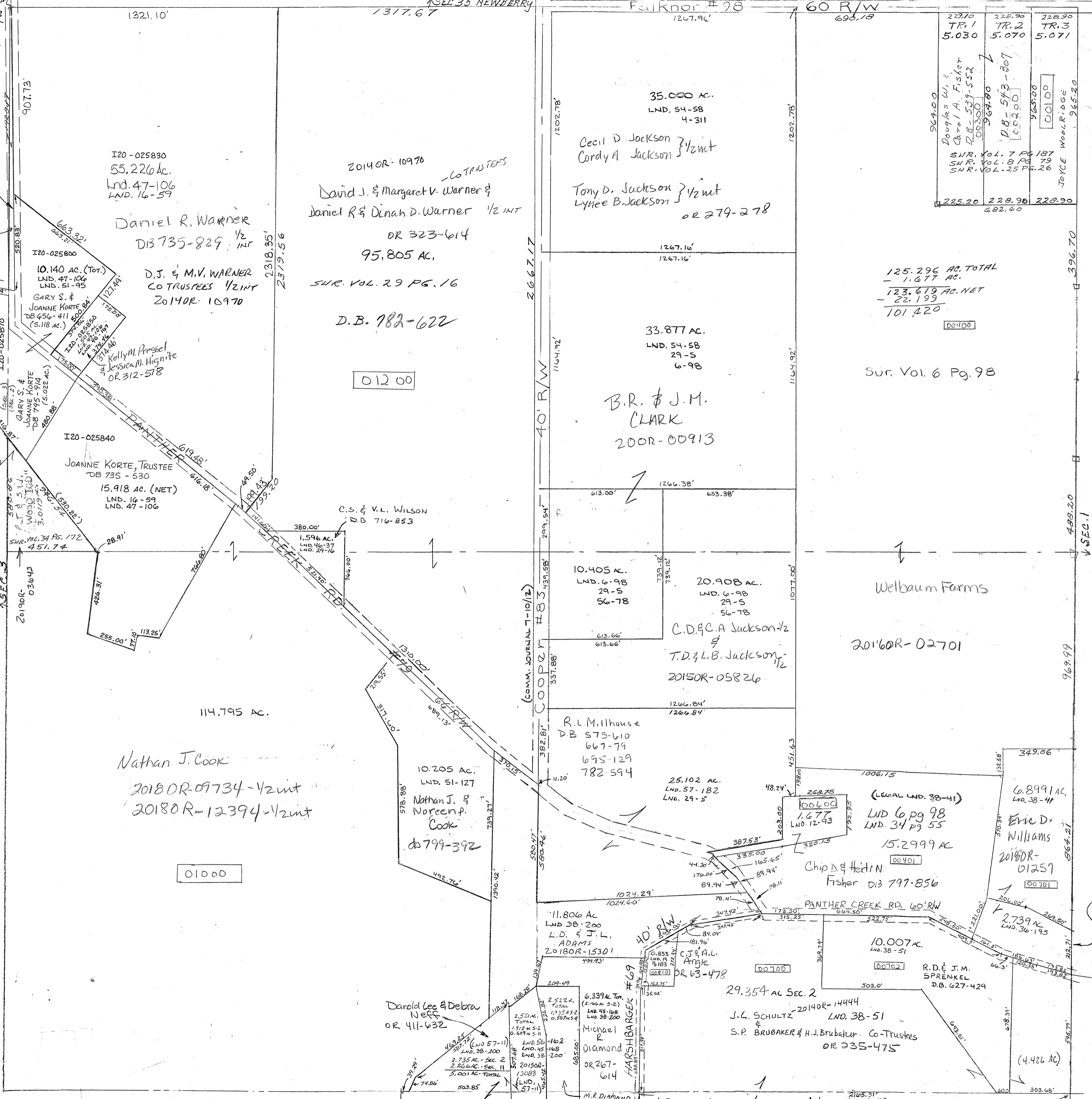


P+E side
 SPT SE - Vol. 4 Pg. 311
 SPT SE - Vol. 4 Pg. 358
 SPT NE & NPT SE - Vol. 6 Pg. 98
 SPT SE - Vol. 7 Pg. 164
 SPT SE - Vol. 7 Pg. 187 - NE PLANE
 SPT SE - Vol. 8 Pg. 79 - NE PLANE
 SPT SE - Vol. 12 Pg. 92 - Cent Pt S
 SPT SE - Vol. 16 Pg. 59 - W.P. NW
 SPT SE - Vol. 17 Pg. 172
 SPT SE - Vol. 18 Pg. 106
 SPT SE - Vol. 19 Pg. 106
 SPT SE - Vol. 20 Pg. 106
 SPT SE - Vol. 21 Pg. 106
 SPT SE - Vol. 22 Pg. 106
 SPT SE - Vol. 23 Pg. 106
 SPT SE - Vol. 24 Pg. 106
 SPT SE - Vol. 25 Pg. 106
 SPT SE - Vol. 26 Pg. 106
 SPT SE - Vol. 27 Pg. 106
 SPT SE - Vol. 28 Pg. 106
 SPT SE - Vol. 29 Pg. 106
 SPT SE - Vol. 30 Pg. 106
 SPT SE - Vol. 31 Pg. 106
 SPT SE - Vol. 32 Pg. 106
 SPT SE - Vol. 33 Pg. 106
 SPT SE - Vol. 34 Pg. 106
 SPT SE - Vol. 35 Pg. 106
 SPT SE - Vol. 36 Pg. 106
 SPT SE - Vol. 37 Pg. 106
 SPT SE - Vol. 38 Pg. 106
 SPT SE - Vol. 39 Pg. 106
 SPT SE - Vol. 40 Pg. 106
 SPT SE - Vol. 41 Pg. 106
 SPT SE - Vol. 42 Pg. 106
 SPT SE - Vol. 43 Pg. 106
 SPT SE - Vol. 44 Pg. 106
 SPT SE - Vol. 45 Pg. 106
 SPT SE - Vol. 46 Pg. 106
 SPT SE - Vol. 47 Pg. 106
 SPT SE - Vol. 48 Pg. 106
 SPT SE - Vol. 49 Pg. 106
 SPT SE - Vol. 50 Pg. 106
 SPT SE - Vol. 51 Pg. 106
 SPT SE - Vol. 52 Pg. 106
 SPT SE - Vol. 53 Pg. 106
 SPT SE - Vol. 54 Pg. 106
 SPT SE - Vol. 55 Pg. 106
 SPT SE - Vol. 56 Pg. 106
 SPT SE - Vol. 57 Pg. 106
 SPT SE - Vol. 58 Pg. 106
 SPT SE - Vol. 59 Pg. 106
 SPT SE - Vol. 60 Pg. 106
 SPT SE - Vol. 61 Pg. 106
 SPT SE - Vol. 62 Pg. 106
 SPT SE - Vol. 63 Pg. 106
 SPT SE - Vol. 64 Pg. 106
 SPT SE - Vol. 65 Pg. 106
 SPT SE - Vol. 66 Pg. 106
 SPT SE - Vol. 67 Pg. 106
 SPT SE - Vol. 68 Pg. 106
 SPT SE - Vol. 69 Pg. 106
 SPT SE - Vol. 70 Pg. 106
 SPT SE - Vol. 71 Pg. 106
 SPT SE - Vol. 72 Pg. 106
 SPT SE - Vol. 73 Pg. 106
 SPT SE - Vol. 74 Pg. 106
 SPT SE - Vol. 75 Pg. 106
 SPT SE - Vol. 76 Pg. 106
 SPT SE - Vol. 77 Pg. 106
 SPT SE - Vol. 78 Pg. 106
 SPT SE - Vol. 79 Pg. 106
 SPT SE - Vol. 80 Pg. 106
 SPT SE - Vol. 81 Pg. 106
 SPT SE - Vol. 82 Pg. 106
 SPT SE - Vol. 83 Pg. 106
 SPT SE - Vol. 84 Pg. 106
 SPT SE - Vol. 85 Pg. 106
 SPT SE - Vol. 86 Pg. 106
 SPT SE - Vol. 87 Pg. 106
 SPT SE - Vol. 88 Pg. 106
 SPT SE - Vol. 89 Pg. 106
 SPT SE - Vol. 90 Pg. 106
 SPT SE - Vol. 91 Pg. 106
 SPT SE - Vol. 92 Pg. 106
 SPT SE - Vol. 93 Pg. 106
 SPT SE - Vol. 94 Pg. 106
 SPT SE - Vol. 95 Pg. 106
 SPT SE - Vol. 96 Pg. 106
 SPT SE - Vol. 97 Pg. 106
 SPT SE - Vol. 98 Pg. 106
 SPT SE - Vol. 99 Pg. 106
 SPT SE - Vol. 100 Pg. 106



229.70	228.90	228.90
TR. 1	TR. 2	TR. 3
5.030	5.070	5.071
Douglas W. & Carol A. Fisher D.B. 539-552 D.B. 543-807 D.B. 543-807 D.B. 543-807		
S.H.R. Vol. 7 Pg. 187 S.H.R. Vol. 8 Pg. 79 S.H.R. Vol. 25 Pg. 26		
225.20	228.90	228.90
682.60		
JOYCE WOOLRIDGE 265.80		

125.296 AC. TOTAL
 - 1.677 AC.
 123.619 AC. NET
 - 22.193
 101.420

SUR. Vol. 6 Pg. 98

2016OR-02701

(LEGAL LND. 38-41)
 LND 6, pg 98
 LND. 34 pg 55
 15.2999 AC

6.899 AC,
 LND. 38-41
 Eric D. Williams
 2016OR-01257

2.739 AC
LND. 36-195

10.007 AC.
 LND. 38-51
 R.D. & J.M. SPRENKEL
 D.B. 627-424

29.354 AC SEC. 2
 2014OR-14444
 J.L. SCHULTZ
 LND. 38-51
 S.P. BRUBAKER & H.J. BRUBAKER - Co-Trustees
 OR 235-475

6.339 AC. Tot.
 (5.164 AC. 5-2)
 LND. 45-108
 LND. 38-200
 Michael R. Diamond
 OR 267-614

2.521 AC. TOTAL
 1.925 AC. 5-2
 0.596 AC. 5-11
 2.735 AC. - Sec. 2
 2.204 AC. - Sec. 11
 5.001 AC. - TOTAL
 (LND. 57-11)
 503.85

11.806 AC.
 LND 38-200
 L.D. & J.L. ADAMS
 2018OR-15301
 499.93

10.205 AC.
 LND. 51-127
 Nathan J. & Noreen P. Cook
 DB 799-392

I20-025830
 55.226 AC.
 LND. 47-106
 LND. 16-59
 Daniel R. Warner
 DB 735-829 1/2 INT

I20-025800
 10.140 AC. (Tot.)
 LND. 47-106
 LND. 51-95
 GARY S. & JOANNE KORTE
 DB 656-411 (5.118 AC.)

D.J. & M.V. WARNER
 CO TRUSTEES 1/2 INT
 2014OR-10970

2014OR-10970
 - CO TRUSTEES
 David J. & Margaret V. Warner &
 Daniel R. & Dinah D. Warner 1/2 INT
 OR 323-614
 95.805 AC.

SUR. VOL. 29 PG. 16

D.B. 782-622

01200

I20-025840
 JOANNE KORTE, TRUSTEE
 DB 735-530
 15.918 AC. (NET)
 LND. 16-59
 LND. 47-106

C.S. & V.L. WILSON
 DB 716-853

10.405 AC.
 LND. 6-98
 29-5
 56-78

20.908 AC.
 LND. 6-98
 29-5
 56-78

C.D. & C.A. JACKSON 1/2
 &
 T.D. & L.B. JACKSON 1/2
 2015OR-05826

R.L. Millhouse
 DB 575-610
 667-79
 695-129
 782-594

25.102 AC.
 LND. 57-182
 LND. 29-5

15.2999 AC
 Chip D. & Heidi N. Fisher
 DB 797-856

6.899 AC,
 LND. 38-41
 Eric D. Williams
 2016OR-01257

114.795 AC.
 Nathan J. Cook
 2018OR-09734-1/2 int
 2018OR-12394-1/2 int

01000

SMDA NUMBER

