

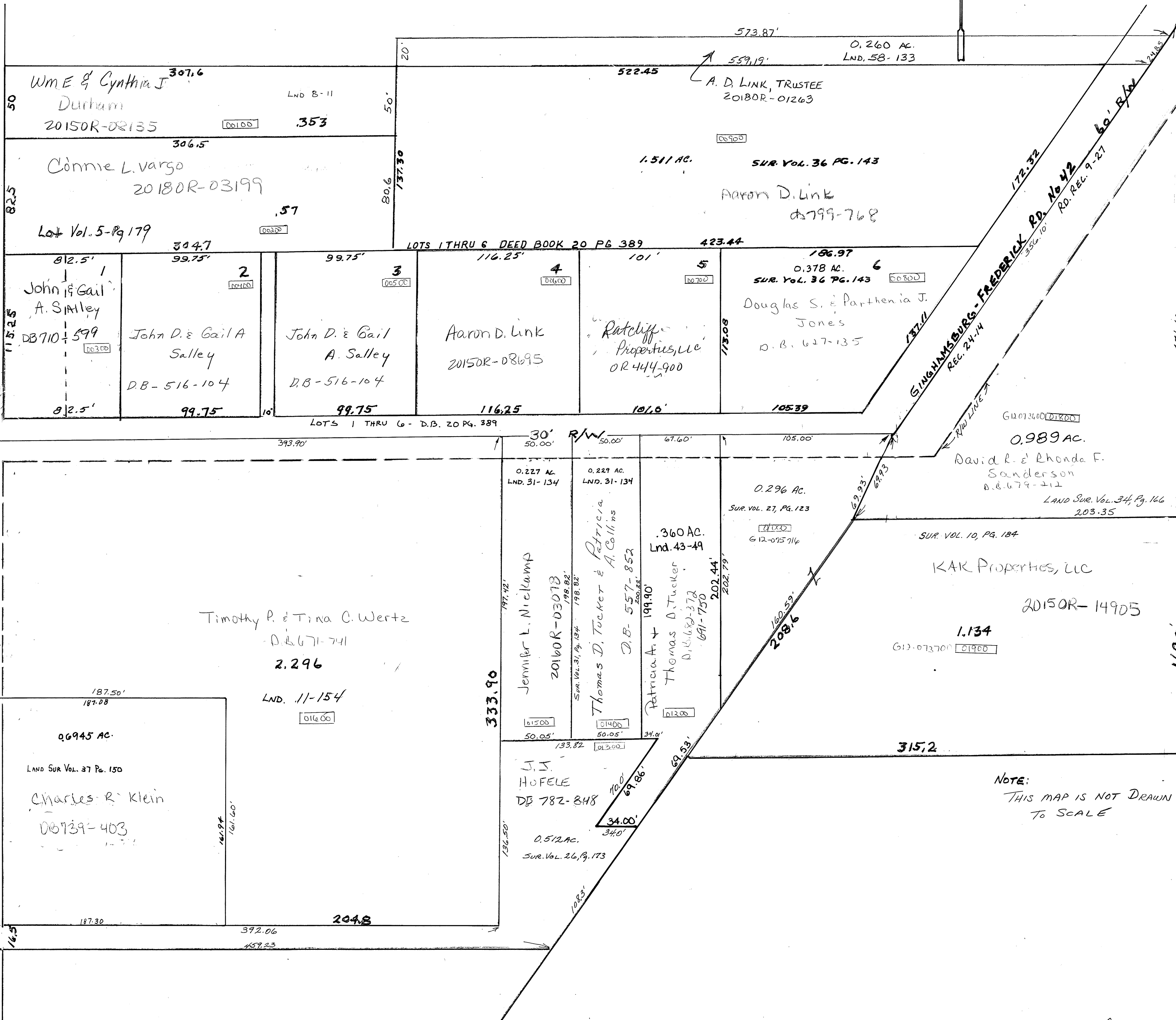
FREDERICK

SMDA NUMBER
612-FR004

PLAT NO 4
Scale 1" = 50 Feet



Kessler - Frederick Road No. 43
60' R/W



WME & Cynthia J Durham
20150R-08135
LND B-11
307.6
353

Connie L. Vargo
20180R-03199
Lot Vol. 5-Pg 179
306.5
.57

John & Gail A. Salley
DB 710-599
812.5'
82.5'
115.25'

John D. & Gail A. Salley
D.B. 516-104
99.75'
99.75'

John D. & Gail A. Salley
D.B. 516-104
99.75'
99.75'

Aaron D. Link
20150R-08695
116.25'
116.25'

Ratchiff Properties, LLC
OR 444-900
101'
101.6'

Douglas S. & Parthenia J. Jones
D.B. 627-135
186.97
0.378 AC.
SUR. Vol. 36 Pg. 143

Timothy P. & Tina C. Wertz
D.B. 671-741
2.296
LND. 11-154
06945 AC.
LAND SUR Vol. 37 Pg. 150
Charles R. Klein
DB 739-403

Jennifer L. Nicklump
20160R-03078
0.227 AC.
LND. 31-134

Thomas D. Tucker & Patricia A. Collins
D.B. 557-852
360 AC.
LND. 43-49

Thomas D. Tucker
D.B. 682-372
0.296 AC.
SUR. Vol. 27, Pg. 123

David R. & Rhonda F. Sanderson
D.B. 679-212
0.989 AC.
LAND SUR. Vol. 34, Pg. 166
203-35
KAR Properties, LLC
20150R-14905
1.134

J. J. HOFELE
DB 782-848
0.512 AC.
SUR. Vol. 26, Pg. 173

NOTE:
THIS MAP IS NOT DRAWN
TO SCALE