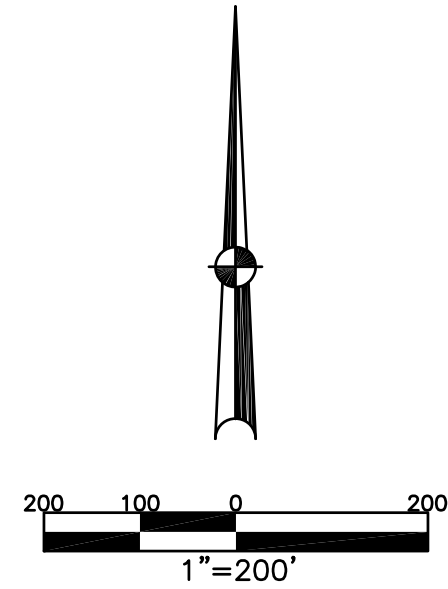


MONROE TWP.  
MIAMI COUNTY, OHIO

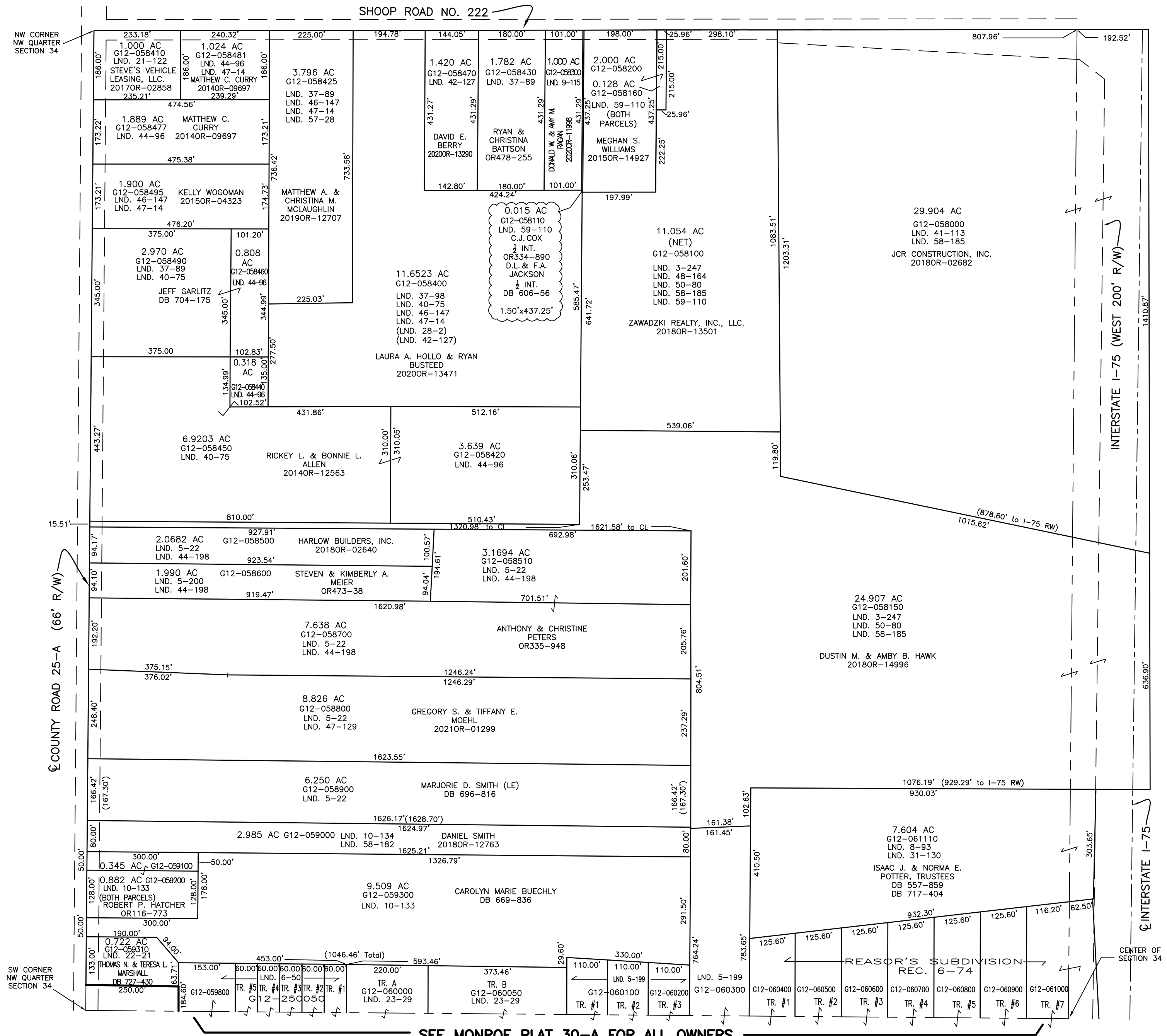
SECTION 34 TOWN 4 RANGE 6  
NORTHWEST QUARTER

PARCEL NUMBER  
G12-\_\_\_\_\_

PLAT 30-B



ABBREVIATION LEGEND		
20140R-07759	=	RECORDER'S DOCUMENT NUMBER
OR 257-619	=	OFFICIAL RECORD 257 PAGE 619
D.B. 613-172	=	DEED BOOK 613, PAGE 172
REC. 15-72	=	RECORDER'S PLAT BOOK 15, PAGE 72
LND. 33-15	=	LAND SURVEY VOLUME 33, PAGE 15
LOT 19-12	=	LOT SURVEY VOLUME 19, PAGE 12
R.R. 8-29	=	ROAD RECORD VOLUME 8, PAGE 29
R/W	=	RIGHT OF WAY
CL	=	CENTERLINE
AC.	=	ACRES
TWP.	=	TOWNSHIP
TR.	=	TRACT
Ⓢ	=	LOT CREATED BY RECORDER'S PLAT
LINE LEGEND		
	=	Blow-up Boundary
	=	Property Line
	=	Lot Split Line
	=	Section Line
	=	Centerline
	=	Right-of-Way Line
	=	Corporation Line
SURVEY INDEX		
LND. 2-16	LND. 37-89	REC. 6-21
LND. 3-247	LND. 40-75	REC. 6-74
LND. 5-22	LND. 41-113	
LND. 5-138	LND. 42-127	
LND. 5-182	LND. 44-96	
LND. 5-200	LND. 44-198	
LND. 6-50	LND. 46-146	
LND. 8-93	LND. 46-147	
LND. 9-115	LND. 47-14	
LND. 10-133	LND. 47-129	
LND. 10-134	LND. 48-164	
LND. 18-84	LND. 50-80	
LND. 21-122	LND. 57-28	
LND. 21-152	LND. 58-182	
LND. 22-21	LND. 58-185	
LND. 23-29	LND. 59-110	
LND. 23-185		
LND. 24-173		
*LND. 28-2*		
LND. 31-130		
		* NOTE: NO DEEDS EVER RECORDED BASED ON SURVEY



PREPARED BY: MIAMI COUNTY ENGINEER'S MAP DEPARTMENT  
PAUL P. HUELSKAMP, P.E., P.S., COUNTY ENGINEER  
DATE: JANUARY 29, 2019 MDB  
REVISED: January 26, 2021 CSHOUP

SEE MONROE PLAT 30-A FOR ALL OWNERS