

# MONROE TWP.

# MIAMI COUNTY, OHIO

# PLAT 28-B

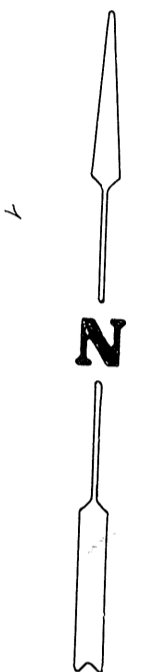
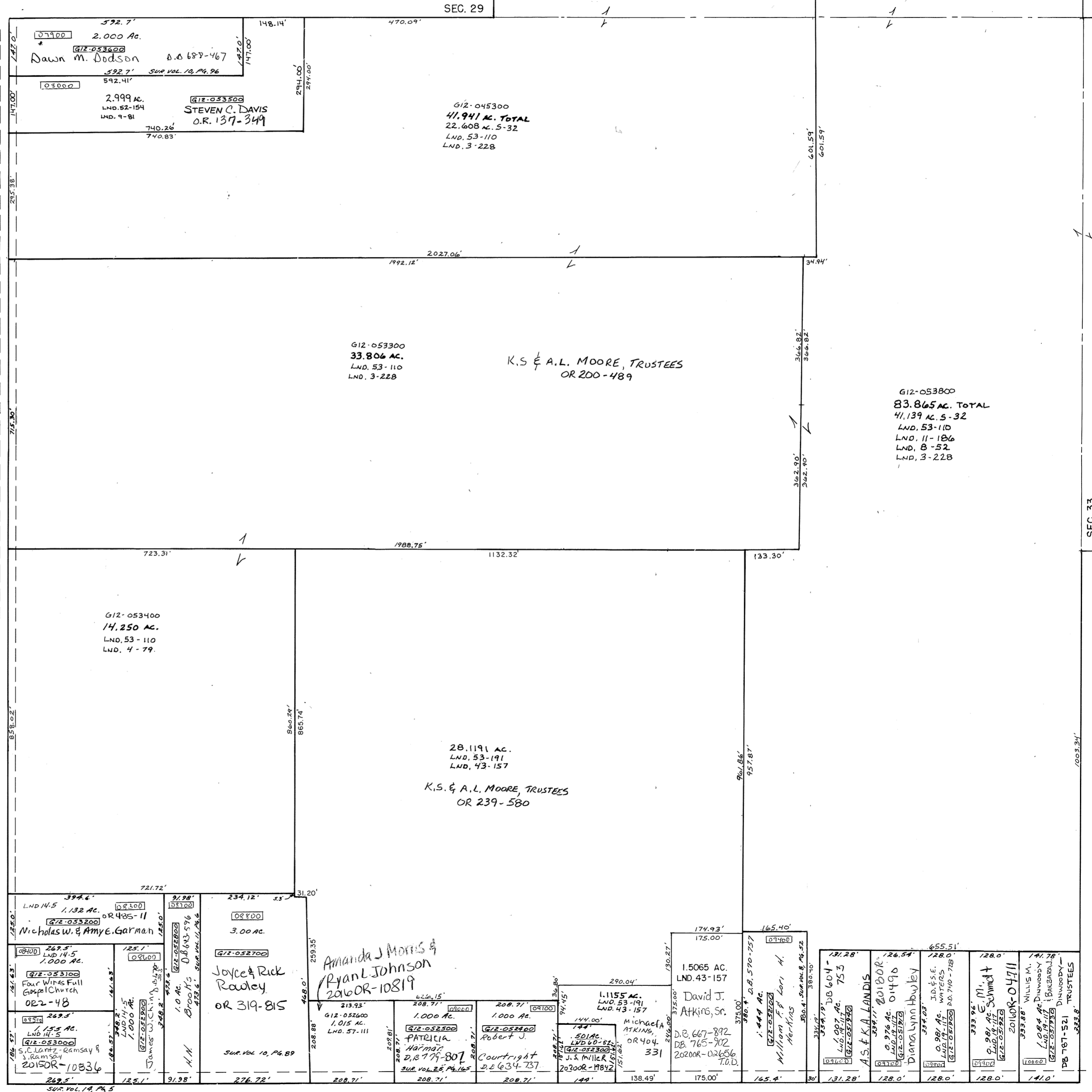
## Section 32, Town 4, Range 6

## N.E. Quarter

SCALE: 1" = 200'

### SURVEYS

- SUR. VOL. 2, PG. 58
- SUR. VOL. 3, PG. 228
- SUR. VOL. 4, PG. 79
- SUR. VOL. 9, PG. 81
- SUR. VOL. 10, PG. 89
- SUR. VOL. 10, PG. 96
- SUR. VOL. 11, PG. 6
- SUR. VOL. 11, PG. 186
- SUR. VOL. 14, PG. 5
- SUR. VOL. 19, PG. 117
- SUR. VOL. 25, PG. 165
- LND. 43-157
- LND. 52-154
- LND. 53-110
- LND. 53-191
- LND. 57-111
- LND. 60-572



SEC. 33

GINGHAMSBURG-FREDERICK RD. NO. 224 60' R/W

Revised 12/31/20