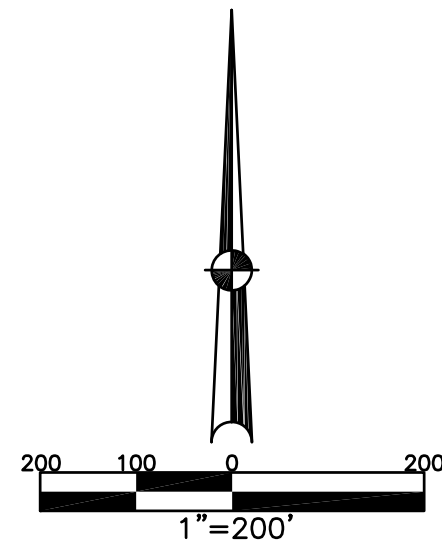


MONROE TOWNSHIP
MIAMI COUNTY, OHIO

SOUTHEAST QUARTER
SECTION 27 TOWN 4 RANGE 6

SMDA NUMBER
G12-MO023A-

PLAT 23A



ABBREVIATION LEGEND		
20140R-07759	=	RECORDER'S DOCUMENT NUMBER
OR 57-197	=	OFFICIAL RECORD 57 PAGE 197
D.B. 613-172	=	DEED BOOK 613, PAGE 172
REC. 15-72	=	RECORDER'S PLAT BOOK 15, PAGE 72
LND. 33-15	=	LAND SURVEY VOLUME 33, PAGE 15
LOT 19-12	=	LOT SURVEY VOLUME 19, PAGE 12
R.R. 8-29	=	ROAD RECORD VOLUME 8, PAGE 29
R/W	=	RIGHT OF WAY
CL	=	CENTERLINE
AC.	=	ACRES
TWP.	=	TOWNSHIP
TR.	=	TRACT
Ⓢ	=	LOT CREATED BY RECORDER'S PLAT

LINE LEGEND		
	=	Blow-up Boundary
	=	Property Line
	=	Lot Split Line
	=	Section Line
	=	Centerline
	=	Right-of-Way Line
	=	Corporation Line

SURVEY INDEX		
REC. 6-21	LND. 2-112	CONDO. 1-21/23
REC. 10-3	LND. 8-62	CONDO. 1-15
REC. 10-43	LND. 9-145	MISC. 13-423
REC. 10-107	LND. 10-9	MISC. 13-295
REC. 11-6	LND. 10-85	MISC. 13-250
REC. 11-81	LND. 11-168	MISC. 13-250
REC. 11-145	LND. 15-32	R.S. 40
REC. 12-36	LND. 15-71	
REC. 12-37	LND. 19-139	
REC. 16-131	LND. 23-12	
REC. 16-135	LND. 29-21	
	LND. 30-122	
	LND. 31-179	
	LND. 38-166	
	LND. 39-38	
	LND. 46-194	
	LND. 47-107	
	LND. 58-110	

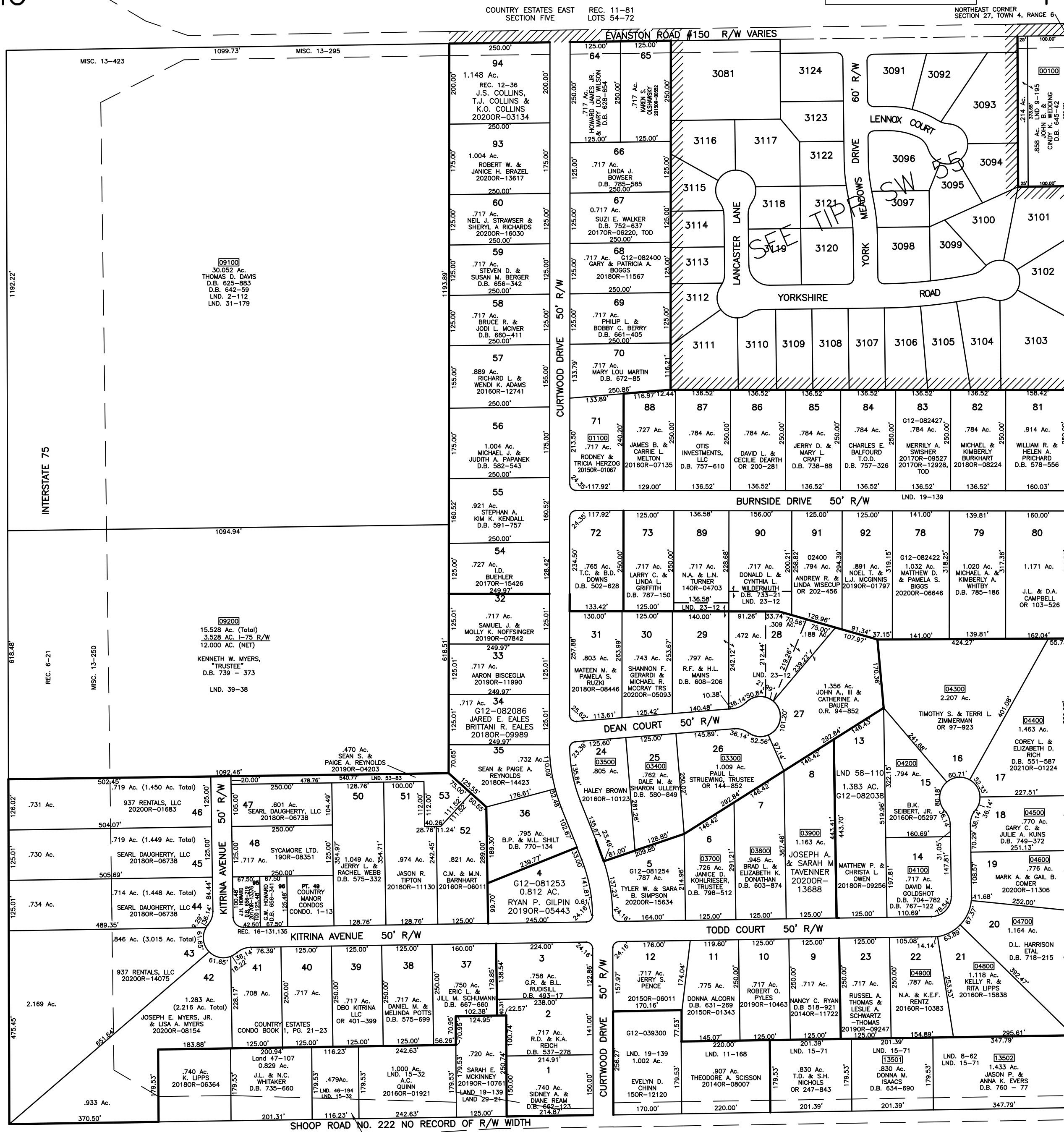
COUNTRY ESTATES EAST
SECTION FOUR
REC. 11-6
LOTS 37-53

COUNTRY ESTATES EAST
SECTION SIX
REC. 11-145
LOTS 73-88

COUNTRY ESTATES EAST
REPLAT
SECTION SIX
REC. 12-37
LOTS 89-92

COUNTRY ESTATES EAST
SECTION THREE
REC. 10-107
LOTS 24-36

COUNTRY ESTATES EAST
SECTION TWO
REC. 10-43
LOTS 13-23



PREPARED BY: MIAMI COUNTY ENGINEER'S MAP DEPARTMENT
PAUL P. HUELSKAMP, COUNTY ENGINEER
DATE: JUNE 24, 1996

REVISED: January 26, 2021 CSHOUP

NOTE: R/W VARIES
SEE RS-40

CASSANDRA A.
FERRELL &
JOHN P. REEDY
20170R-09913

COUNTRY ESTATES EAST
SECTION ONE
REC. 10-3
LOTS 1-12