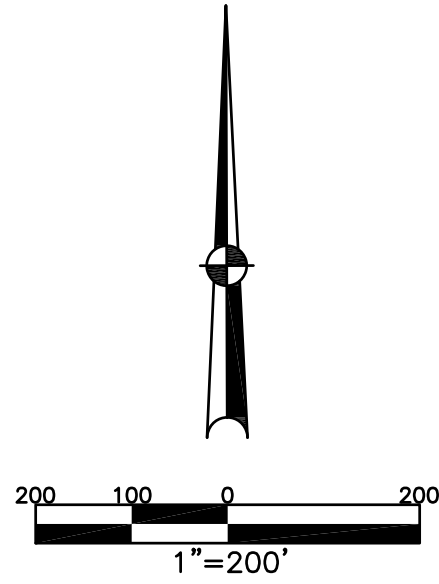


MONROE TWP.
MIAMI COUNTY, OHIO

SECTION 21 TOWN 4 RANGE 6
NE 1/4

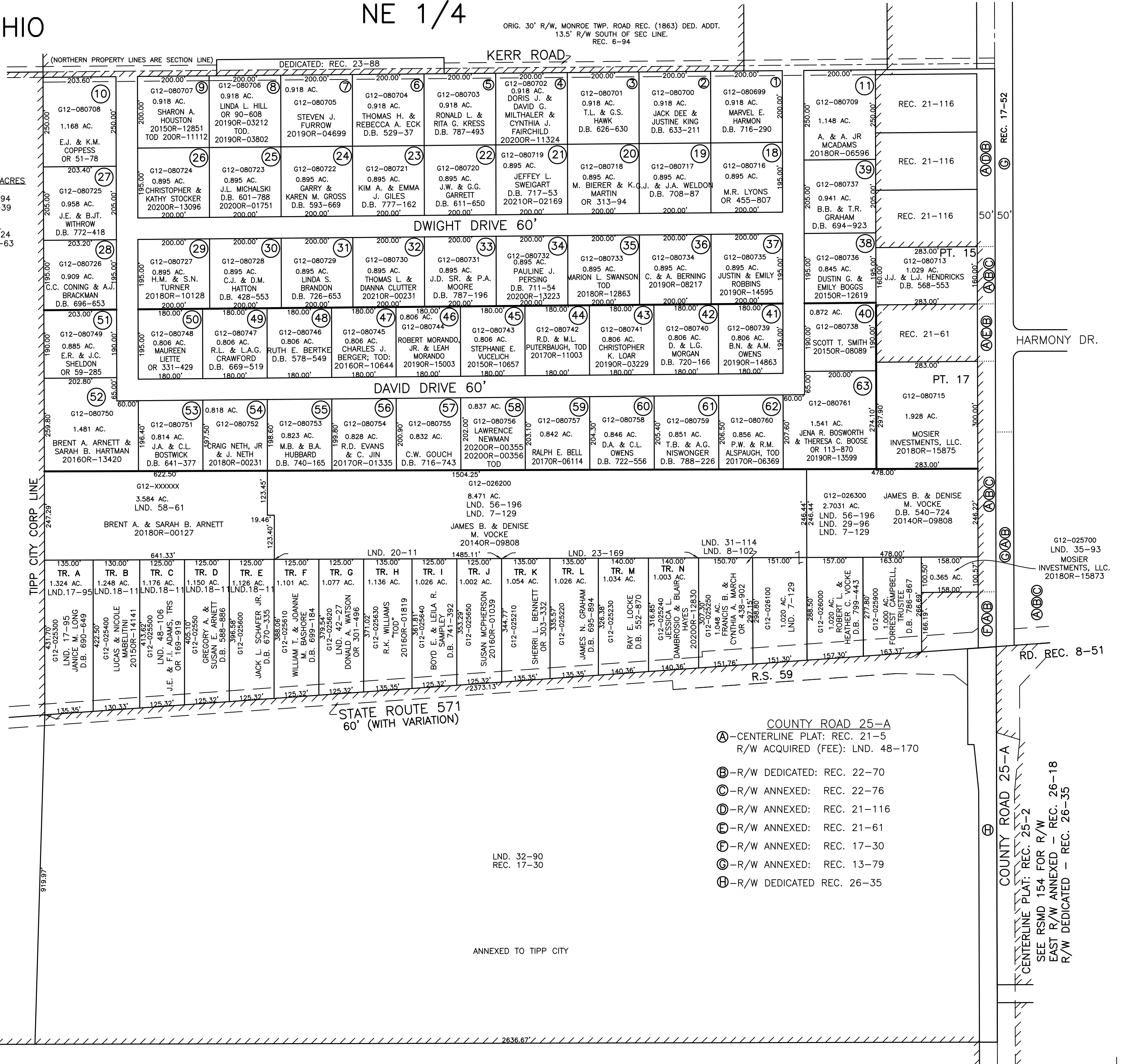
PARCEL NUMBER
G12

PLAT 15-A



DIXIE TARA ACRES
NO. 1
REC. 6-94
LOTS 1-39
NO. 2
REC. 7-24
LOTS 40-63

ABBREVIATION LEGEND		
20140R-07759 =	RECORDER'S DOCUMENT NUMBER	
OR 257-619 =	OFFICIAL RECORD 257 PAGE 619	
D.B. 613-172 =	DEED BOOK 613, PAGE 172	
REC. 15-72 =	RECORDER'S PLAT BOOK 15, PAGE 72	
LND. 33-15 =	LAND SURVEY VOLUME 33, PAGE 15	
LOT 19-12 =	LOT SURVEY VOLUME 19, PAGE 12	
R.R. 8-29 =	ROAD RECORD VOLUME 8, PAGE 29	
R/W	= RIGHT OF WAY	
⊕	= CENTERLINE	
AC.	= ACRES	
TWP.	= TOWNSHIP	
TR.	= TRACT	
Ⓢ	= LOT CREATED BY RECORDER'S PLAT	
LINE LEGEND		
	Blow-up Boundary	
	Property Line	
	Lot Split Line	
	Section Line	
	Centerline	
	Right-of-Way Line	
	Corporation Line	
SURVEY INDEX		
LND. 7-129	REC. 6-51	RD. REC. 8-51
LND. 8-102	REC. 6-94	R.S. 59
LND. 12-33	REC. 7-24	
LND. 17-95	REC. 13-79	
LND. 18-11	REC. 17-30	
LND. 20-11	REC. 17-52	
LND. 20-179	REC. 21-5	
LND. 23-169	REC. 21-61	
LND. 29-96	REC. 21-116	
LND. 31-114	REC. 22-70	
LND. 32-90	REC. 22-76	
LND. 35-93	REC. 23-88	
LND. 42-27	REC. 25-2 RSMD 154	
LND. 48-106	REC. 26-18	
LND. 48-170	REC. 26-35	
LND. 56-196		
LND. 58-61		



PREPARED BY: MIAMI COUNTY ENGINEER'S MAP DEPARTMENT
PAUL P. HUELSKAMP, P.E., P.S., COUNTY ENGINEER
DATE: DECEMBER 10, 2014 MB
REVISED: February 9, 2021 CSHOUP

2636.67'