

MONROE TWP.

MIAMI COUNTY, OHIO

PLAT 14-A

Section 20, Town 4, Range 6

N.E. Quarter SEC. 20

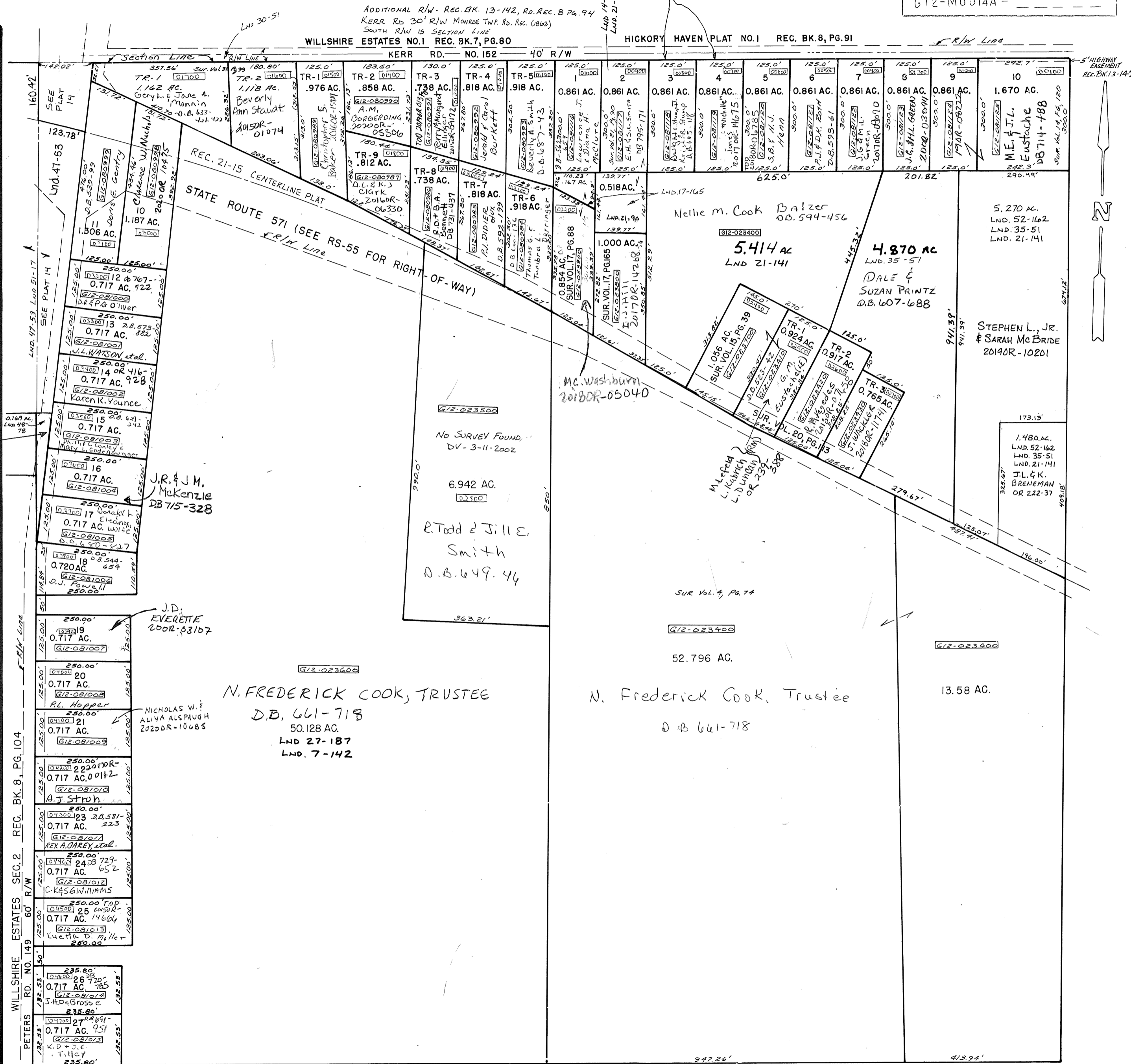
SCALE: 1" = 200'

SMDA NUMBER
G12-M0014A -

SURVEYS

- SUR. VOL. 3, PG. 4
- SUR. VOL. 4, PG. 74
- SUR. VOL. 7, PG. 142
- SUR. VOL. 14, PG. 102
- SUR. VOL. 14, PG. 120
- SUR. VOL. 15, PG. 39
- SUR. VOL. 15, PG. 45
- SUR. VOL. 17, PG. 88
- SUR. VOL. 17, PG. 165
- SUR. VOL. 20, PG. 113
- SUR. VOL. 21, PG. 90
- SUR. VOL. 21, PG. 141
- SUR. VOL. 30, PG. 51
- SUR. VOL. 31, PG. 99
- SUR. VOL. 35, PG. 51
- Lnd. 47-53
- LND 48-78
- LND. 51-17

- REC. BK. 7, PG. 80
- REC. BK. 8, PG. 91
- REC. BK. 8, PG. 104
- REC. BK. 8, PG. 123
- REC. BK. 13, PG. 142



S.G. & S.P. FIDLER
D.B. 447-553
LAST OWNER WITH GOOD TITLE
SEE PLAT 14 FOR CURRENT OWNERSHIP

J.D. EVERETTE
200R-03107

NICHOLAS W. ALINA ALSPAUGH
2022DR-10685

N. FREDERICK COOK, TRUSTEE
D.B. 661-718
50.128 AC.
LND 27-187
LND. 7-142

N. Frederick Cook, Trustee
D.B. 661-718