

MONROE TWP.

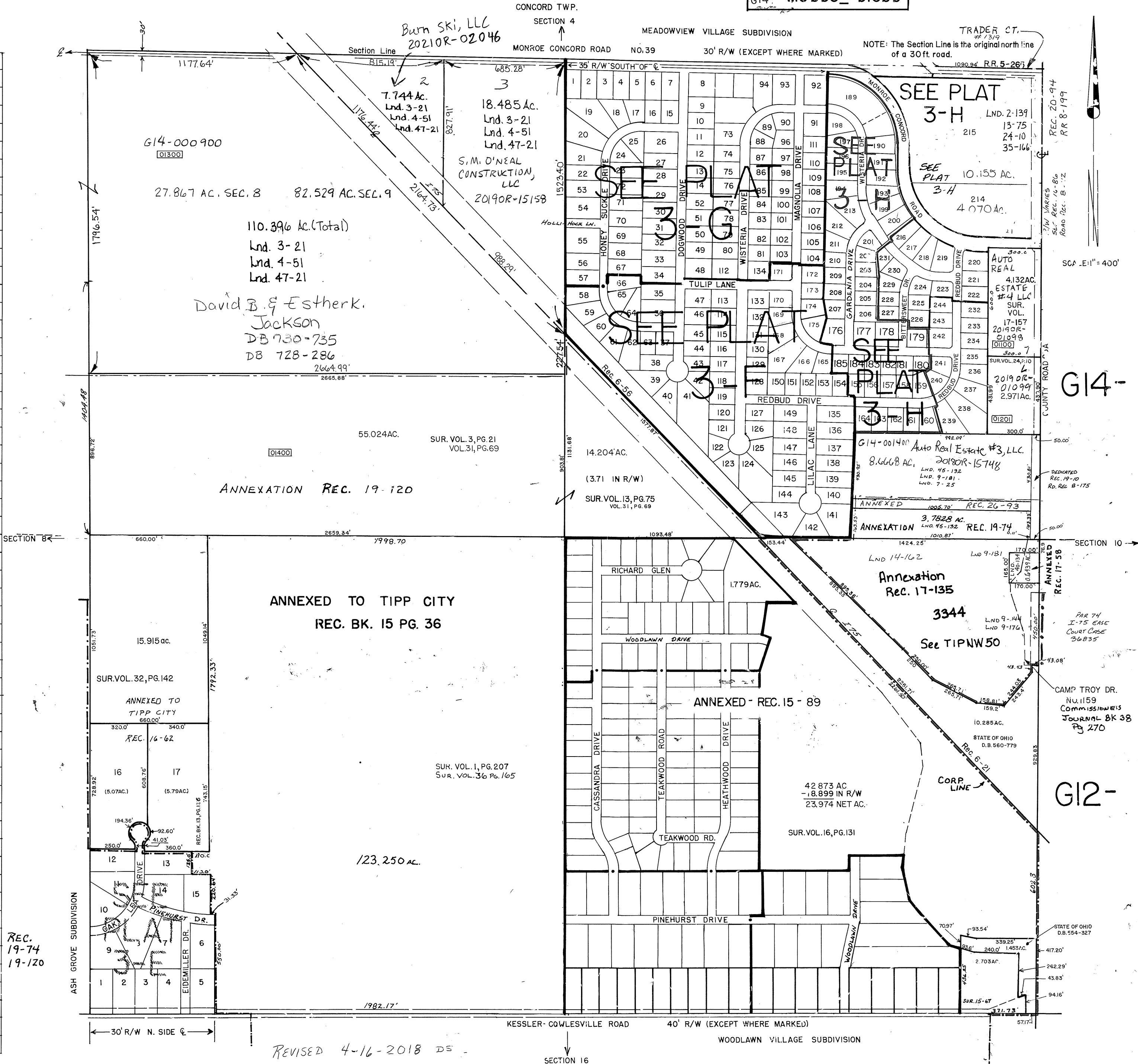
MIAMI COUNTY, OHIO

PLAT NO. 3

Section 9, Town 4, Range 6

SMDA NUMBER
G12
G14 - M0003_01300

VOL. NO. - PG. NO.	DISCRIPTION
LAND SURVEYS - N.E. Quarter	
1-207	entire section
2-139	Monroe-Concord
7-25	25A
9-181	25A
17-157	25A
24-10	Monroe-Concord
13-75	I-75
35-166	
45-132	Rec 19-10
RECORDERS BOOK - N.E. Quarter	
6-21	25A
6-56	25A
11-65	Meadowview #1
11-131	" #2
11-135	" #3
12-60	" #4
12-95	" #5
12-128	" #6
14-28	" #7
15-100	" #10
LAND SURVEYS - S.E. Quarter	
1-207	entire section
4-437	Camp Troy intersection
8-191	Kessler-Cowlesville
9-42	" "
9-144	25A
10-72	Kessler-Cowlesville
16-131	Camp Troy intersection
12-181	Kessler-Cowlesville
15-67	" "
14-162	25A
29-117	Sherlynn Drive
40-134	25A
RECORDERS BOOK - S.E. Quarter	
9-26	Woodlawn Village #1
9-115	" #2
6-21	25A
6-56	25A
11-36	Woodlawn Village #3
12-63	" #4
12-119	" #5
12-120	" #6
40-134	25A
LAND SURVEYS - S.W. Quarter	
RECORDERS BOOK - S.W. Quarter	
11-34	Ash Grove Subdivision #1
11-100	" #2
13-135	" #3
LAND SURVEYS - N.W. Quarter	
3-21	South Central Part
4-51	" "
31-69	South Part
32-142	N.W. PART
47-21	N. Half of NW Qtr.



REVISED 4-16-2018 DS