

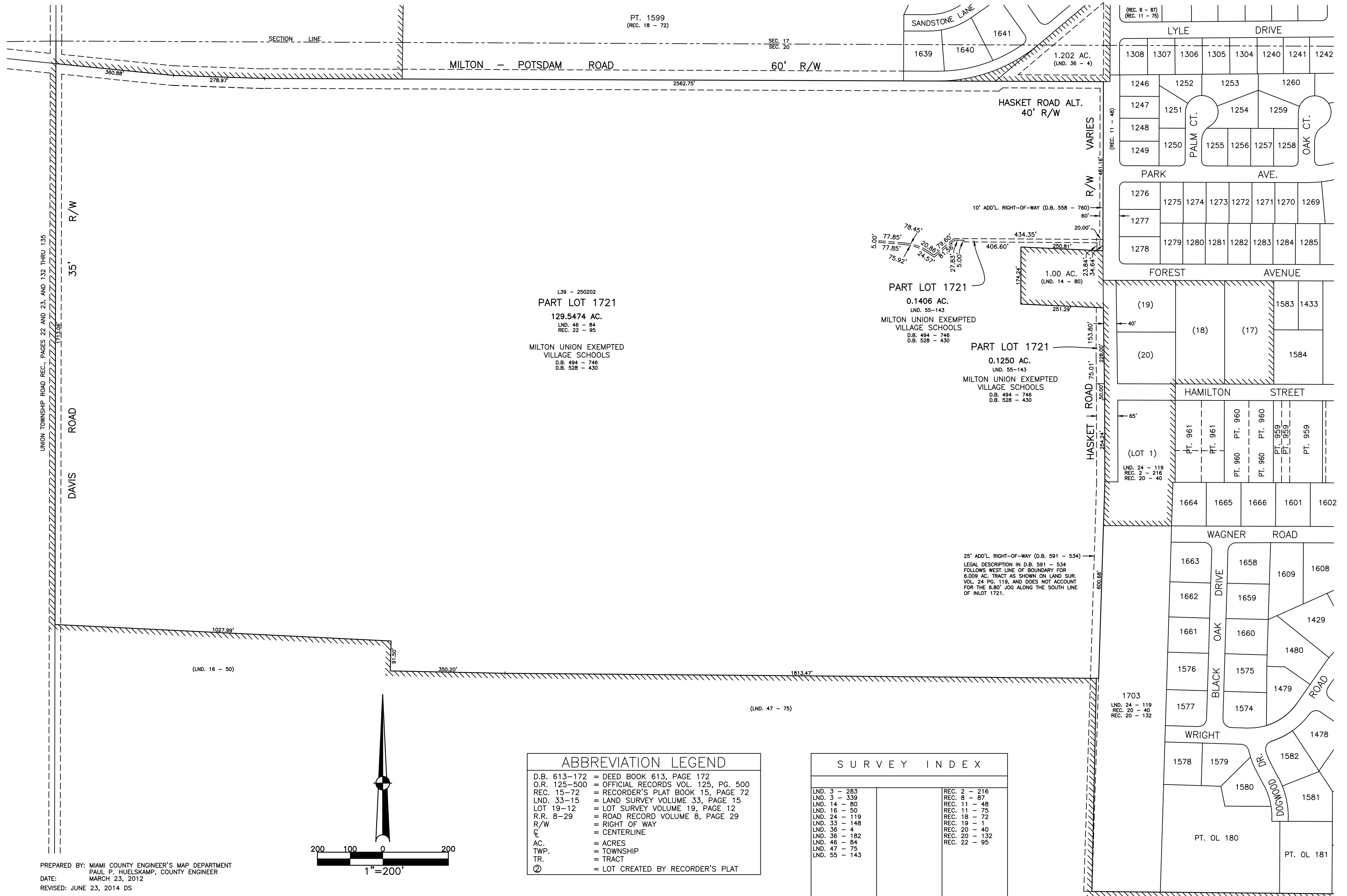
# VILLAGE OF WEST MILTON

## MIAMI COUNTY, OHIO

SECTION 20 TOWN 6 RANGE 5

PARCEL NUMBER  
L39 - \_\_\_\_\_

N. HALF 77



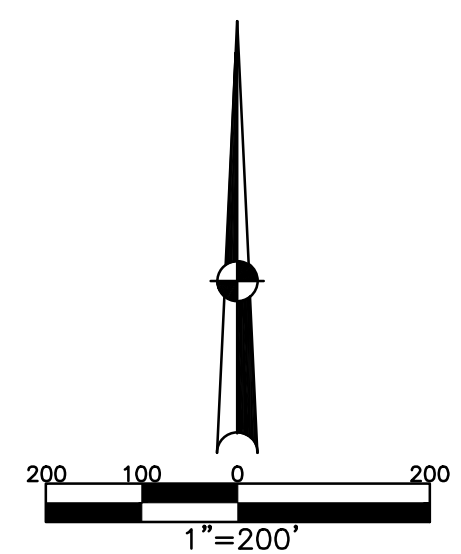
L39 - 250202  
**PART LOT 1721**  
0.1406 AC.  
LND. 55-143  
MILTON UNION EXEMPTED  
VILLAGE SCHOOLS  
D.B. 494 - 746  
D.B. 528 - 430

PART LOT 1721  
0.1406 AC.  
LND. 55-143  
MILTON UNION EXEMPTED  
VILLAGE SCHOOLS  
D.B. 494 - 746  
D.B. 528 - 430

PART LOT 1721  
0.1250 AC.  
LND. 55-143  
MILTON UNION EXEMPTED  
VILLAGE SCHOOLS  
D.B. 494 - 746  
D.B. 528 - 430

ABBREVIATION LEGEND	
D.B. 613-172	= DEED BOOK 613, PAGE 172
O.R. 125-500	= OFFICIAL RECORDS VOL. 125, PG. 500
REC. 15-72	= RECORDER'S PLAT BOOK 15, PAGE 72
LND. 33-15	= LAND SURVEY VOLUME 33, PAGE 15
LOT 19-12	= LOT SURVEY VOLUME 19, PAGE 12
R.R. 8-29	= ROAD RECORD VOLUME 8, PAGE 29
R/W	= RIGHT OF WAY
C	= CENTERLINE
AC.	= ACRES
TWP.	= TOWNSHIP
TR.	= TRACT
②	= LOT CREATED BY RECORDER'S PLAT

SURVEY INDEX	
LND. 3 - 283	REC. 2 - 216
LND. 3 - 339	REC. 8 - 87
LND. 14 - 80	REC. 11 - 48
LND. 16 - 50	REC. 11 - 75
LND. 24 - 119	REC. 18 - 72
LND. 33 - 148	REC. 19 - 1
LND. 36 - 4	REC. 20 - 40
LND. 36 - 182	REC. 20 - 132
LND. 46 - 84	REC. 22 - 95
LND. 47 - 75	
LND. 55 - 143	



PREPARED BY: MIAMI COUNTY ENGINEER'S MAP DEPARTMENT  
PAUL P. HUELSKAMP, COUNTY ENGINEER  
DATE: MARCH 23, 2012  
REVISED: JUNE 23, 2014 DS