

SECTION 17 & 20  
TOWN 6  
RANGE 5

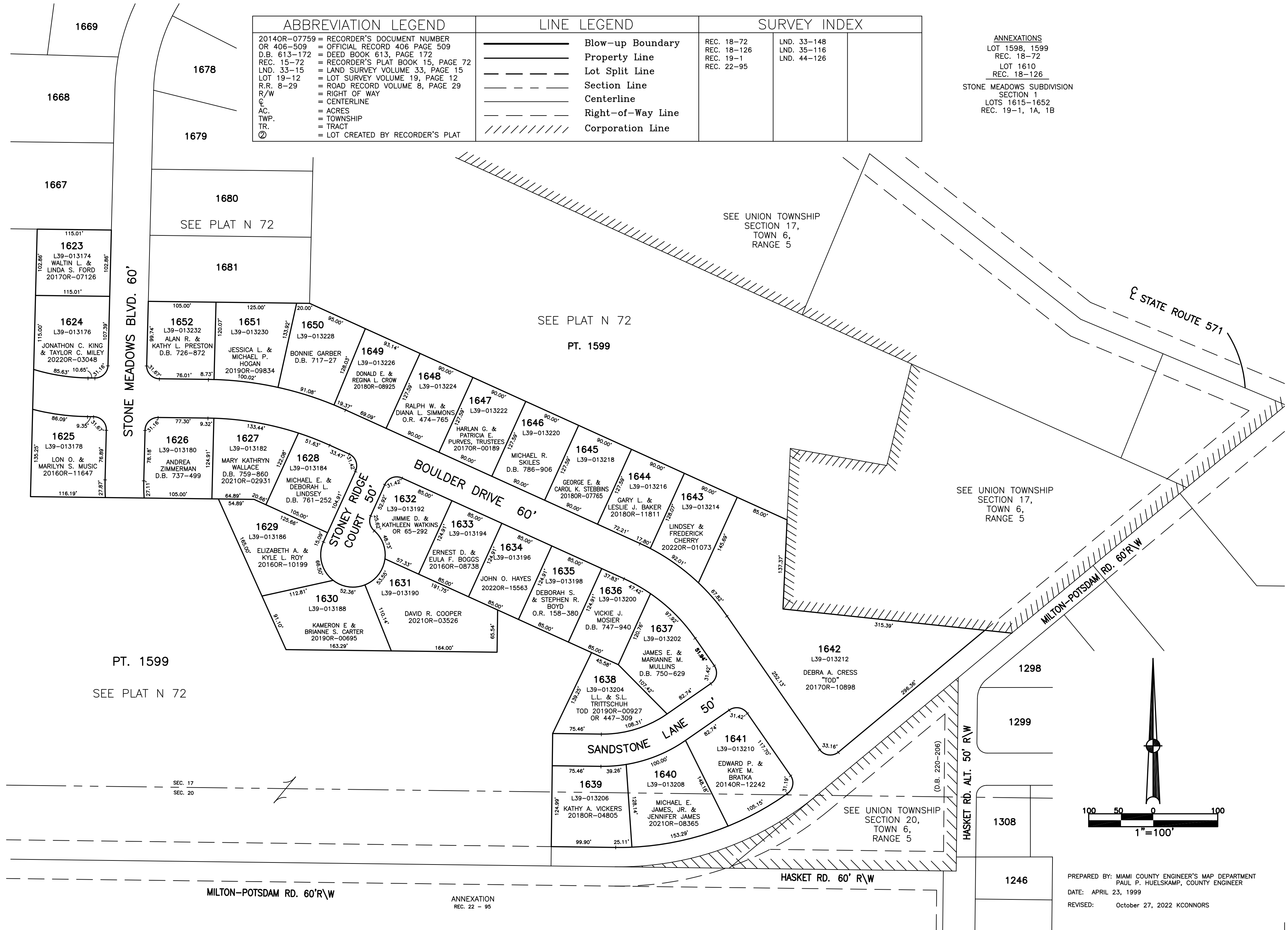
VILLAGE OF WEST MILTON  
MIAMI COUNTY, OHIO

PARCEL NUMBER  
L39 - \_\_\_\_\_

PLAT N 73

ABBREVIATION LEGEND		LINE LEGEND		SURVEY INDEX	
2014OR-07759	= RECORDER'S DOCUMENT NUMBER		Blow-up Boundary	REC. 18-72	LND. 33-148
OR 406-509	= OFFICIAL RECORD 406 PAGE 509		Property Line	REC. 18-126	LND. 35-116
D.B. 613-172	= DEED BOOK 613, PAGE 172		Lot Split Line	REC. 19-1	LND. 44-126
REC. 15-72	= RECORDER'S PLAT BOOK 15, PAGE 72		Section Line	REC. 22-95	
LND. 33-15	= LAND SURVEY VOLUME 33, PAGE 15		Right-of-Way Line		
LOT 19-12	= LOT SURVEY VOLUME 19, PAGE 12		Centerline		
R.R. 8-29	= ROAD RECORD VOLUME 8, PAGE 29		Right-of-Way Line		
R/W	= RIGHT OF WAY		Corporation Line		
AC.	= ACRES				
TWP.	= TOWNSHIP				
TR.	= TRACT				
Ⓢ	= LOT CREATED BY RECORDER'S PLAT				

ANNEXATIONS  
LOT 1598, 1599  
REC. 18-72  
LOT 1610  
REC. 18-126  
STONE MEADOWS SUBDIVISION  
SECTION 1  
LOTS 1615-1652  
REC. 19-1, 1A, 1B



PT. 1599  
SEE PLAT N 72

SEE UNION TOWNSHIP  
SECTION 17,  
TOWN 6,  
RANGE 5

SEE UNION TOWNSHIP  
SECTION 20,  
TOWN 6,  
RANGE 5

MILTON-POTSDAM RD. 60'R\W  
ANNEXATION  
REC. 22 - 95

PREPARED BY: MIAMI COUNTY ENGINEER'S MAP DEPARTMENT  
PAUL P. HUELSKAMP, COUNTY ENGINEER  
DATE: APRIL 23, 1999  
REVISED: October 27, 2022 KCONNORS