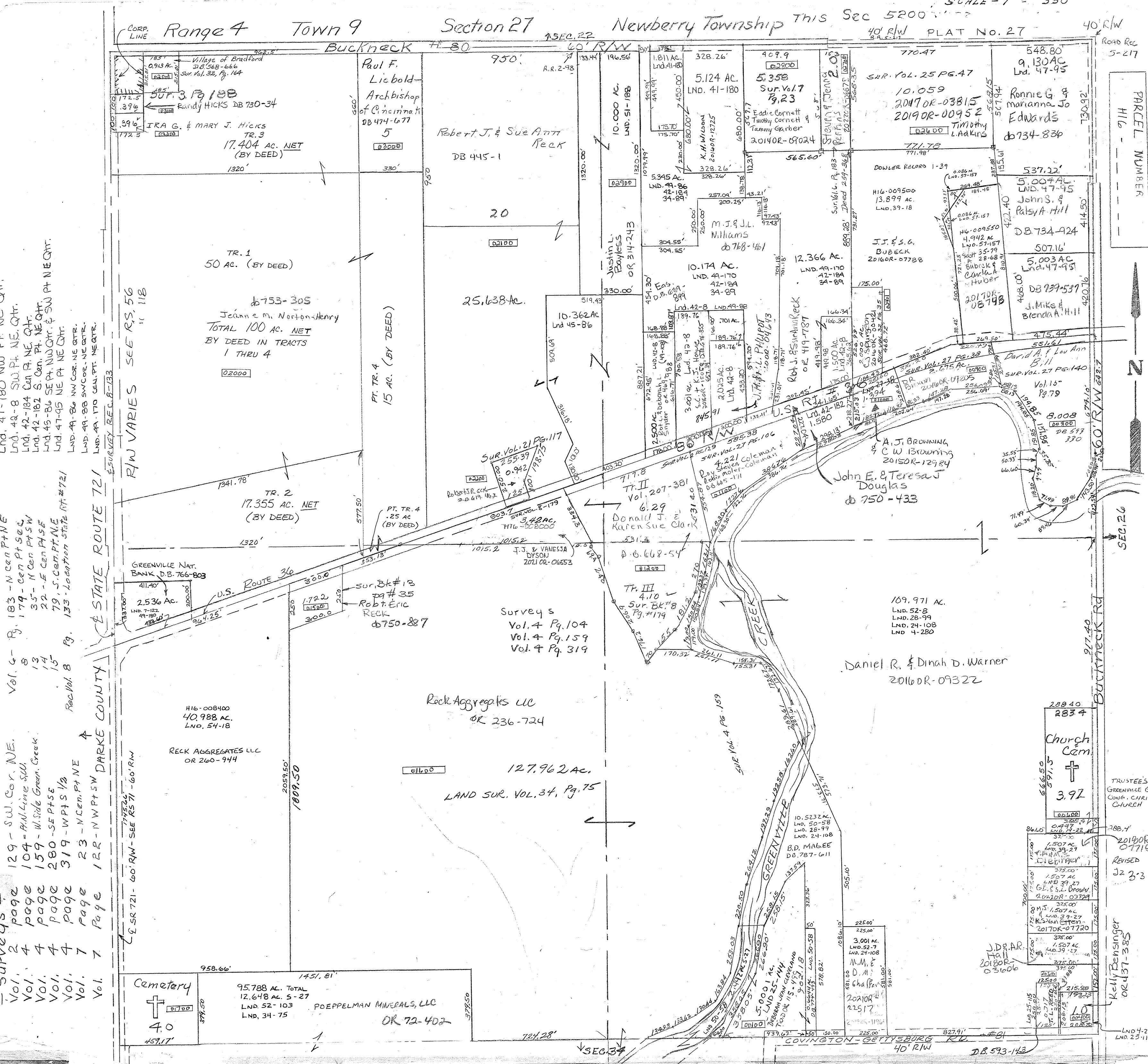


- Surveys +
- Vol. 2 page 129 - SW Cor. NE.
- Vol. 4 page 104 - NW Line SW
- Vol. 4 page 159 - W Side Green Creek
- Vol. 4 page 280 - SE Pts E
- Vol. 7 page 319 - W Pts 1/2
- Vol. 7 page 23 - N Cen. Pt NE
- Vol. 7 page 122 - NW Pts SW
- Vol. 7 page 129 - SW Cor. NE.
- Vol. 8 page 104 - NW Line SW
- Vol. 8 page 159 - W Side Green Creek
- Vol. 8 page 280 - SE Pts E
- Vol. 8 page 319 - W Pts 1/2
- Vol. 8 page 23 - N Cen. Pt NE
- Vol. 8 page 122 - NW Pts SW
- Vol. 8 page 129 - SW Cor. NE.
- Vol. 8 page 104 - NW Line SW
- Vol. 8 page 159 - W Side Green Creek
- Vol. 8 page 280 - SE Pts E
- Vol. 8 page 319 - W Pts 1/2
- Vol. 8 page 23 - N Cen. Pt NE
- Vol. 8 page 122 - NW Pts SW
- Vol. 8 page 129 - SW Cor. NE.



SCALE - 1" = 330'

Range 4 Town 9 Section 27 Newberry Township This Sec 5200 40' R/W PLAT No. 27 40' R/W ROAD REC 5-217

Parcel Number H16 - 118

Parcel Number H16 - 118

Parcel Number H16 - 118

Parcel Number H16 - 118

Parcel Number H16 - 118

Parcel Number H16 - 118

Parcel Number H16 - 118

Parcel Number H16 - 118

Parcel Number H16 - 118

Parcel Number H16 - 118

Paul F. Licbold
Archbishop
of Cincinnati
DB 474-677

Robert J. & Sue Ann
Reck
DB 445-1

Justin L.
Royless
OR 314-243

M.J. & J.L.
Williams
OR 768-461

John E. & Teresa J.
Douglas
OR 750-433

Daniel R. & Dinah D. Warner
2016OR-09322

Rock Aggregates LLC
OR 236-724

Church
Cem
3.97

Cemetery
40

Poeppelman Minerals, LLC
OR 72-402

TR. 1
50 AC. (BY DEED)

TR. 2
17.355 AC. NET
(BY DEED)

TR. III
4.10

TR. IV
15 AC. (BY DEED)

TR. V
17.355 AC. NET
(BY DEED)

TR. VI
17.355 AC. NET
(BY DEED)

TR. VII
17.355 AC. NET
(BY DEED)

TR. VIII
17.355 AC. NET
(BY DEED)

TR. IX
17.355 AC. NET
(BY DEED)

TR. X
17.355 AC. NET
(BY DEED)

TR. 1
50 AC. (BY DEED)

TR. 2
17.355 AC. NET
(BY DEED)

TR. III
4.10

TR. IV
15 AC. (BY DEED)

TR. V
17.355 AC. NET
(BY DEED)

TR. VI
17.355 AC. NET
(BY DEED)

TR. VII
17.355 AC. NET
(BY DEED)

TR. VIII
17.355 AC. NET
(BY DEED)

TR. IX
17.355 AC. NET
(BY DEED)

TR. X
17.355 AC. NET
(BY DEED)

TR. 1
50 AC. (BY DEED)

TR. 2
17.355 AC. NET
(BY DEED)

TR. III
4.10

TR. IV
15 AC. (BY DEED)

TR. V
17.355 AC. NET
(BY DEED)

TR. VI
17.355 AC. NET
(BY DEED)

TR. VII
17.355 AC. NET
(BY DEED)

TR. VIII
17.355 AC. NET
(BY DEED)

TR. IX
17.355 AC. NET
(BY DEED)

TR. X
17.355 AC. NET
(BY DEED)

TR. 1
50 AC. (BY DEED)

TR. 2
17.355 AC. NET
(BY DEED)

TR. III
4.10

TR. IV
15 AC. (BY DEED)

TR. V
17.355 AC. NET
(BY DEED)

TR. VI
17.355 AC. NET
(BY DEED)

TR. VII
17.355 AC. NET
(BY DEED)

TR. VIII
17.355 AC. NET
(BY DEED)

TR. IX
17.355 AC. NET
(BY DEED)

TR. X
17.355 AC. NET
(BY DEED)

TR. 1
50 AC. (BY DEED)

TR. 2
17.355 AC. NET
(BY DEED)

TR. III
4.10

TR. IV
15 AC. (BY DEED)

TR. V
17.355 AC. NET
(BY DEED)

TR. VI
17.355 AC. NET
(BY DEED)

TR. VII
17.355 AC. NET
(BY DEED)

TR. VIII
17.355 AC. NET
(BY DEED)

TR. IX
17.355 AC. NET
(BY DEED)

TR. X
17.355 AC. NET
(BY DEED)

TR. 1
50 AC. (BY DEED)

TR. 2
17.355 AC. NET
(BY DEED)

TR. III
4.10

TR. IV
15 AC. (BY DEED)

TR. V
17.355 AC. NET
(BY DEED)

TR. VI
17.355 AC. NET
(BY DEED)

TR. VII
17.355 AC. NET
(BY DEED)

TR. VIII
17.355 AC. NET
(BY DEED)

TR. IX
17.355 AC. NET
(BY DEED)

TR. X
17.355 AC. NET
(BY DEED)

TR. 1
50 AC. (BY DEED)

TR. 2
17.355 AC. NET
(BY DEED)

TR. III
4.10

TR. IV
15 AC. (BY DEED)

TR. V
17.355 AC. NET
(BY DEED)

TR. VI
17.355 AC. NET
(BY DEED)

TR. VII
17.355 AC. NET
(BY DEED)

TR. VIII
17.355 AC. NET
(BY DEED)

TR. IX
17.355 AC. NET
(BY DEED)

TR. X
17.355 AC. NET
(BY DEED)

TR. 1
50 AC. (BY DEED)

TR. 2
17.355 AC. NET
(BY DEED)

TR. III
4.10

TR. IV
15 AC. (BY DEED)

TR. V
17.355 AC. NET
(BY DEED)

TR. VI
17.355 AC. NET
(BY DEED)

TR. VII
17.355 AC. NET
(BY DEED)

TR. VIII
17.355 AC. NET
(BY DEED)

TR. IX
17.355 AC. NET
(BY DEED)

TR. X
17.355 AC. NET
(BY DEED)