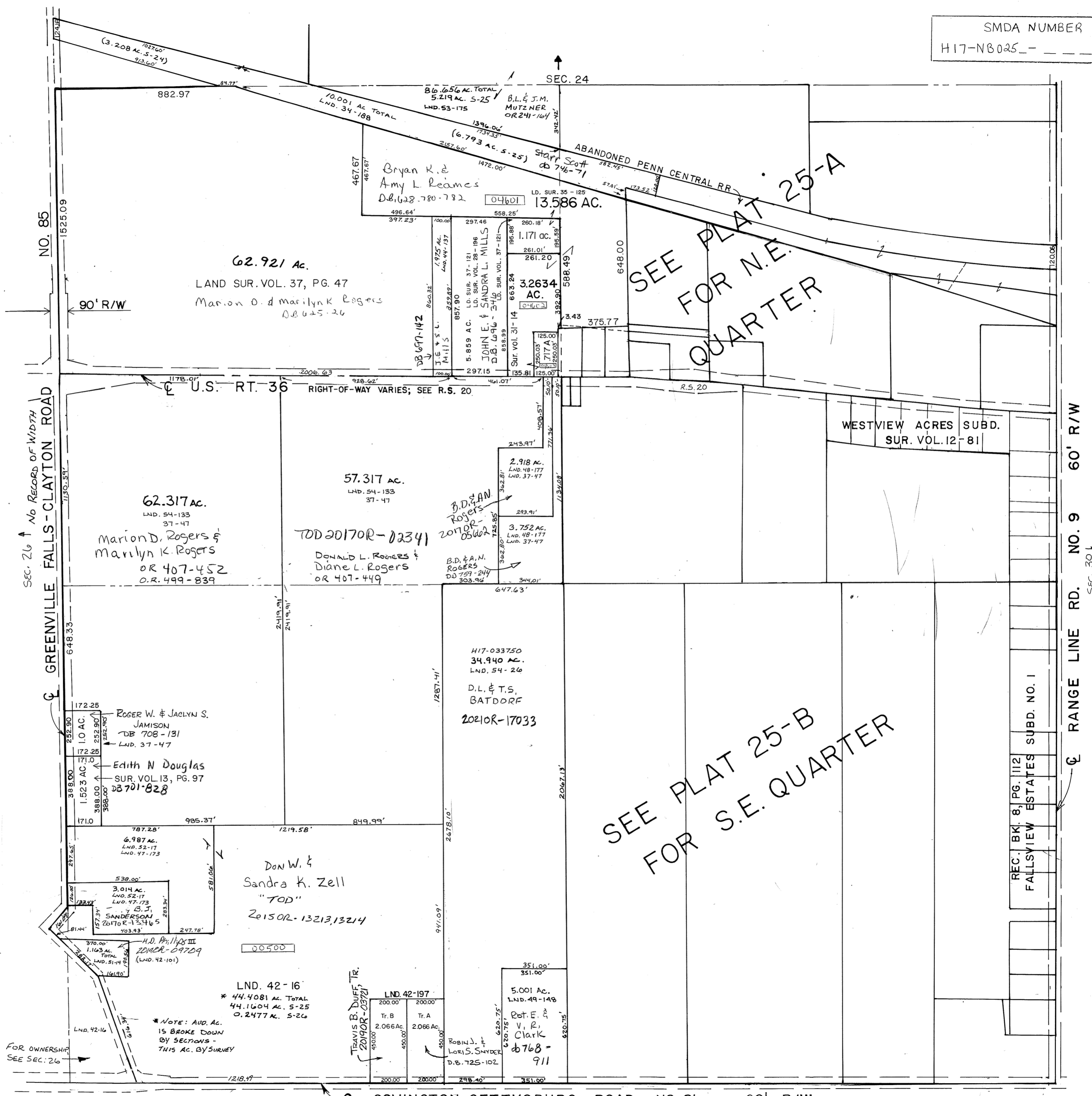


SMDA NUMBER
H17-NB025- - - - -



NO. 85

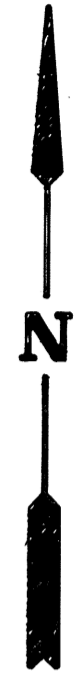
SEC. 26 ↑ No RECORD OF WIDTH
GREENVILLE FALLS-CLAYTON ROAD

2012 R/W
REC. 24-13
RD. REC. 9-26

2004 R/W
RD. REC. 9-32
REC. 25-96

COVINGTON-GETTYSBURG ROAD NO. 81 60' R/W

60' R/W
NO. 9
RANGE LINE RD. NO. 9
SEC. 30 ↓



SEE PLAT 25-A
FOR N.E.
QUARTER

SEE PLAT 25-B
FOR S.E. QUARTER

62.921 Ac.
LAND SUR. VOL. 37, PG. 47
Marion D. & Marilyn K. Rogers
D.B. 625-26

62.317 Ac.
LND. 54-133
37-47
Marion D. Rogers &
Marilyn K. Rogers
OR 407-452
O.R. 499-839

57.317 Ac.
LND. 54-133
37-47
TOD 20170R-0234
DONALD L. ROGERS &
Diane L. Rogers
OR 407-449

H17-033750
34.940 Ac.
LND. 54-26
D.L. & T.S.
BATDORF
20210R-17033

ROGER W. & JACLYN S.
JAMISON
DB 708-131
LND. 37-47
Edith N. Douglas
SUR. VOL. 13, PG. 97
28701-828

6.987 Ac.
LND. 52-17
LND. 47-173
3.014 Ac.
LND. 52-17
LND. 47-173
B. J.
SANDERSON
20170R-13346

Don W. &
Sandra K. Zell
"TOD"
2015OR-13213, 13214

LND. 42-16
* 44.4081 Ac. TOTAL
44.1604 Ac. S-25
0.2477 Ac. S-26

TRAVIS B. DUFF, JR.
2019OR-02721
LND. 42-197
Tr. B 2.066 Ac.
Tr. A 2.066 Ac.

5.001 Ac.
LND. 49-148
Rob. E. &
V. R.
Clark
db 768-911

REC. BK. 8, PG. 112
FALLSVIEW ESTATES SUBD. NO. 1

REVISED 10/6/21
ADP