

PARCEL NUMBER
H16-1111

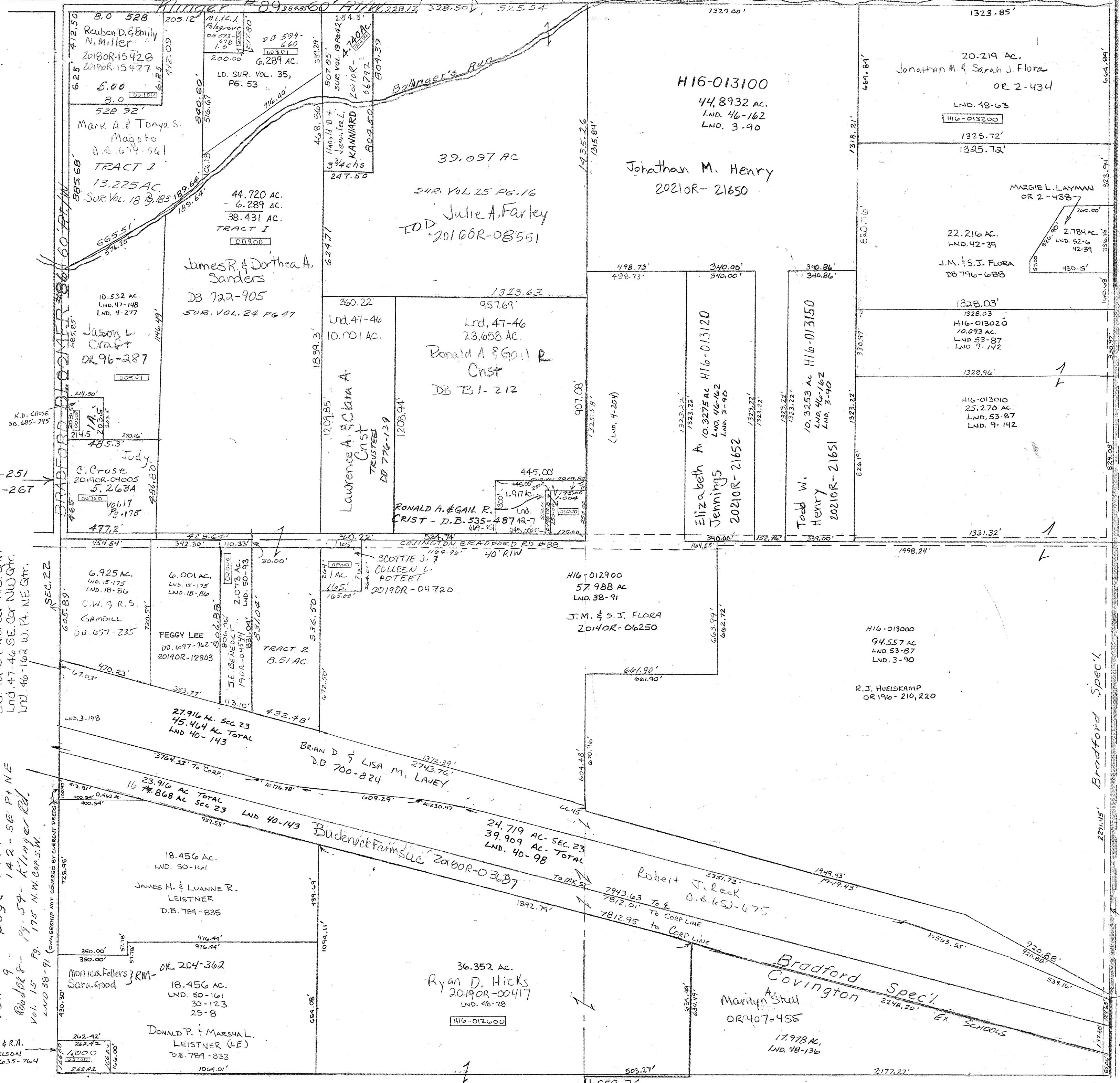


SEC. 24

Bradford Spec'l.
Covington Spec'l.
GREENVILLE FALLS-CLAYTON RD. # T-85 60' R/W & SCHOOL DISTRICT LINE

REVISED
12/21/21

- Vol. 17 Pg. 175 N.W. COR. N.W.
- Vol. 118 Pg. 86 N.W. COR. S.W.
- Vol. 42-7 SE. COR. N.W. QTR.
- Vol. 42-3A NE. COR. N.E. QTR.
- Vol. 47-46 SE. COR. N.W. QTR.
- Vol. 46-162 W. PT. NE. QTR.
- Vol. 3 - page 90 - Whole
- Vol. 3 - page 198 - W. PT. SW
- Vol. 4 - page 204 - SW PT. NW
- Vol. 4 - page 277 - SW PT. NW
- Vol. 9 - page 142 - SE PT. NE
- Rd BK 8 - Pg. 54 - Klinger Rd.
- Vol. 15 Pg. 175 N.W. COR. S.W.
- Vol. 38-91 (OWNERSHIP NOT COVERED BY CURRENT PLATS)
- J.H. & R.A. HUDELSON D.B. 635-764



J.H. & R.A. HUDELSON D.B. 635-764

REVISED
12/21/21