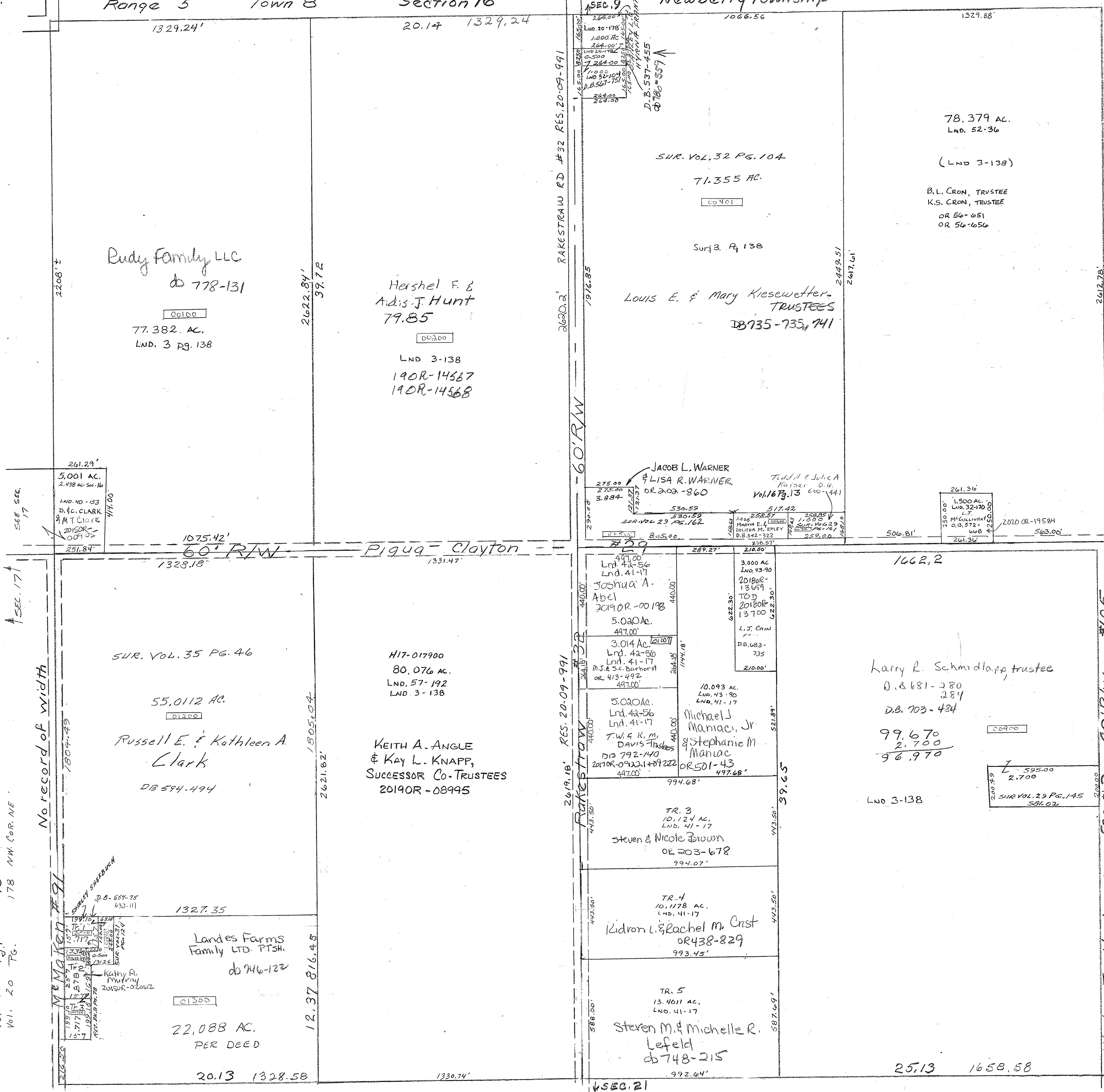
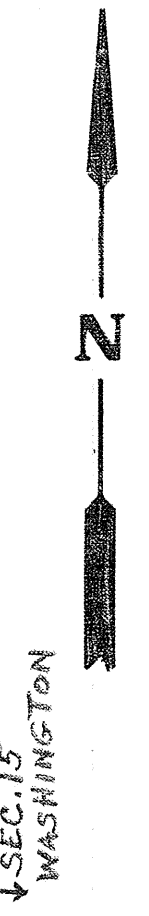


Range 5 Town 8 Section 16

Newberry township

Surveys
Vol. 2 page 44 Whole
Vol. 3 page 138 (Whole)
Rec. Vol. 8 Page 78 S.W. PT. 54
Vol. 16 Pg. 13 S. Cent. Pt. NE
Vol. 20 Pg. 178 NW. COR. NE

SMDA NUMBER
H17-NB016



Rudy Family LLC
db 778-131
77.382 AC.
LND. 3 Pg. 138

Hershel F. &
Arlis J. Hunt
79.85
LND 3-138
190R-14587
190R-14568

Louis E. & Mary Kieseletter.
TRUSTEES
DB 735-735, 741

78.379 AC.
LND. 52-36
(LND 3-138)
B.L. CRON, TRUSTEE
K.S. CRON, TRUSTEE
OR 56-651
OR 56-656

5,001 AC.
2,438 AC. SEC. 16
LND. 40-153
D. & C. CLARK
& M. T. CLARK
2015OR-009105

JACOB L. WARNER
& LISA R. WARNER
OR 2002-860
Tedd A & Julie A
Kaiser D.B.
Vol. 16 Pg. 13
600-441

SUR. VOL. 35 PG. 46
55,012 AC.
Russell E. & Kathleen A.
Clark
DB 594-494

H17-017900
80,076 AC.
LND. 57-192
LND. 3-138
KEITH A. ANGLE
& KAY L. KNAPP,
SUCCESSOR CO-TRUSTEES
2019OR-08995

Joshua A.
Abel
2019OR-00198
5.020 AC.
447.00'
3.014 AC.
Lnd. 42-56
Lnd. 41-17
M.J. & S.C. Barnhorst
OR 413-492
447.00'

3,000 AC
LND. 43-90
2018OR-13699
L.J. CAIN
DB. 683-735
210.00'
10,093 AC.
LND. 43-90
LND. 41-17
Michael J.
Mamae, Jr.
& Stephanie M.
Mamae
OR 501-43
497.68'

Harry R. Schmidlapp trustee
O.B. 681-280
284
D.B. 703-484
99,670
2,700
96,970

Landes Farms
Family LTD. PTSH.
db 746-122
22,088 AC.
PER DEED
20.13 1328.58

TR. 3
10,124 AC.
LND. 41-17
Steven & Nicole Brown
OR 203-678
994.07'

TR. 4
10,1178 AC.
LND. 41-17
Kidron L. & Rachel M. Crist
OR 438-829
993.45'

TR. 5
13,4011 AC.
LND. 41-17
Steven M. & Michelle R.
Lefeld
db 748-215
992.64'

595.00
2,700
SUR VOL. 29 PG. 145
581.02

Washington-Newberry South 30' RW #105