

Surveys: Vol 2 page 55 - V.V.S.F. Vol 4 page 61 - W.P. SW. Vol 3 page 87 - Washington Trp. - 59-Klinger Rd. Pl. Rec. bk. 6 - Pg. 59-Klinger Rd.

843.00' 10.004 AC LND. 41-99 Benjamin P Rank & Kristen A. Fike OR 436-594 843.00'

879.73' 15.412 Ac. Lnd. 42-75 Terry L. Suerdieck DB 706-151 642.07'

40.525 AC. S-14 104,800 AC. TOTAL LND. 49-23 LND. 48-194

The Board of Commissioners of Miami Co. Park Dist. do 768-924

DENEKE Farms, LLC OR 207-294, 299

74.7274 AC SUR. Vol. 23 Pg. 156

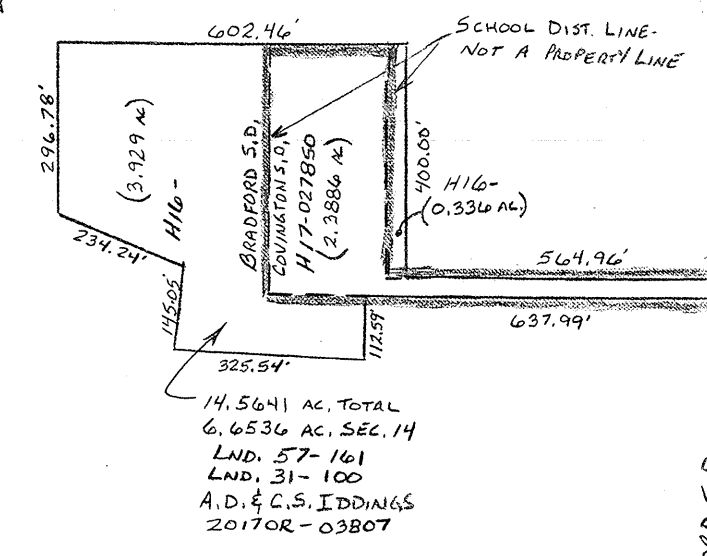
55.400 Ac. Lnd. 42-75 SUR. Vol. 27 Pg. 51 John F. & Mary Ann Simon (LE) & Anthony James Simon (RM) do 755-463

James R + Heidi Sojovia 2022OR-07911

SUR. VOL. 37 Pg. 155

Anna L. Fike OR 441-116

100.96 AC. LAND SUR. VOL. 35, Pg. 121



BRADFORD SCHOOL DISTRICT BRADFORD S.D. COVINGTON EVSD

SMDA NUMBER H16-NB014



Sur. Vol. 4 Pg. 61 KURT A. & PAMELA S. LOCKER DB 688-686

40.649 AC LND. 43-171

DANIEL S. SCHRADER 2015OR-14178 2015OR-14179

26.630 AC. LND. 56-160 2-55

Heidi J. Gochhour DB 732-383

Carolyn S. Iddings OR 263-182

49.790 AC. LAND SUR. VOL. 37, PG. 61

TRACT 1 10.002 AC. MICHAEL R. SCHAFER, D.B. 674-688 SUR. VOL. 35, Pg. 18 SUR. VOL. 31 PG. 8

J. & J. SHAFER DB 697-818 17.038 AC. LND. 42-47 LND. 27-120

Kent E. & Terri A. Hoover D.B. 682-621 17.121 AC. Lnd. 27-120 Lnd. 42-47

10.002 AC. J. HOLTVOGT DB 794-101

Christopher H. & Hope F. Schrader 2016OR-05448

Brian F. Keptak 0 B 667-795

Kent D. & Mandi M. Hansen - Trustees 2016OR-07375

Daniel E. & Connie J. Suerdieck P.A. 632-552

ELISHA BROGAN 2018OR-11983

20,936 AC. LND. 58-134 LND. 37-61

2.501 AC. LND. 35-108 2.500 AC. LND. 35-108

3.188 AC. LND. 42-47

3.846 AC. LND. 41-144

5.044 TOTAL 0.523 R/W. CARINE Trakte OR 30-85 525.54

13.614 AC. LND. 57-29 56-160 2-55

5.041 AC. LND. 38-62

5.041 AC. LND. 38-62

5.041 AC. LND. 38-62

James B. & Jerrilyn M. Freeman 2017OR-02457

J.W. & J.A. Farley DB 720-213

SEC. 23

FALLS - CLAYTON RD. #85 60' R/W #86 40' R/W #87 60' R/W #88 40' R/W #89 60' R/W

REVISED 01/19/22