

NEWBERRY TWP.

MIAMI COUNTY, OHIO

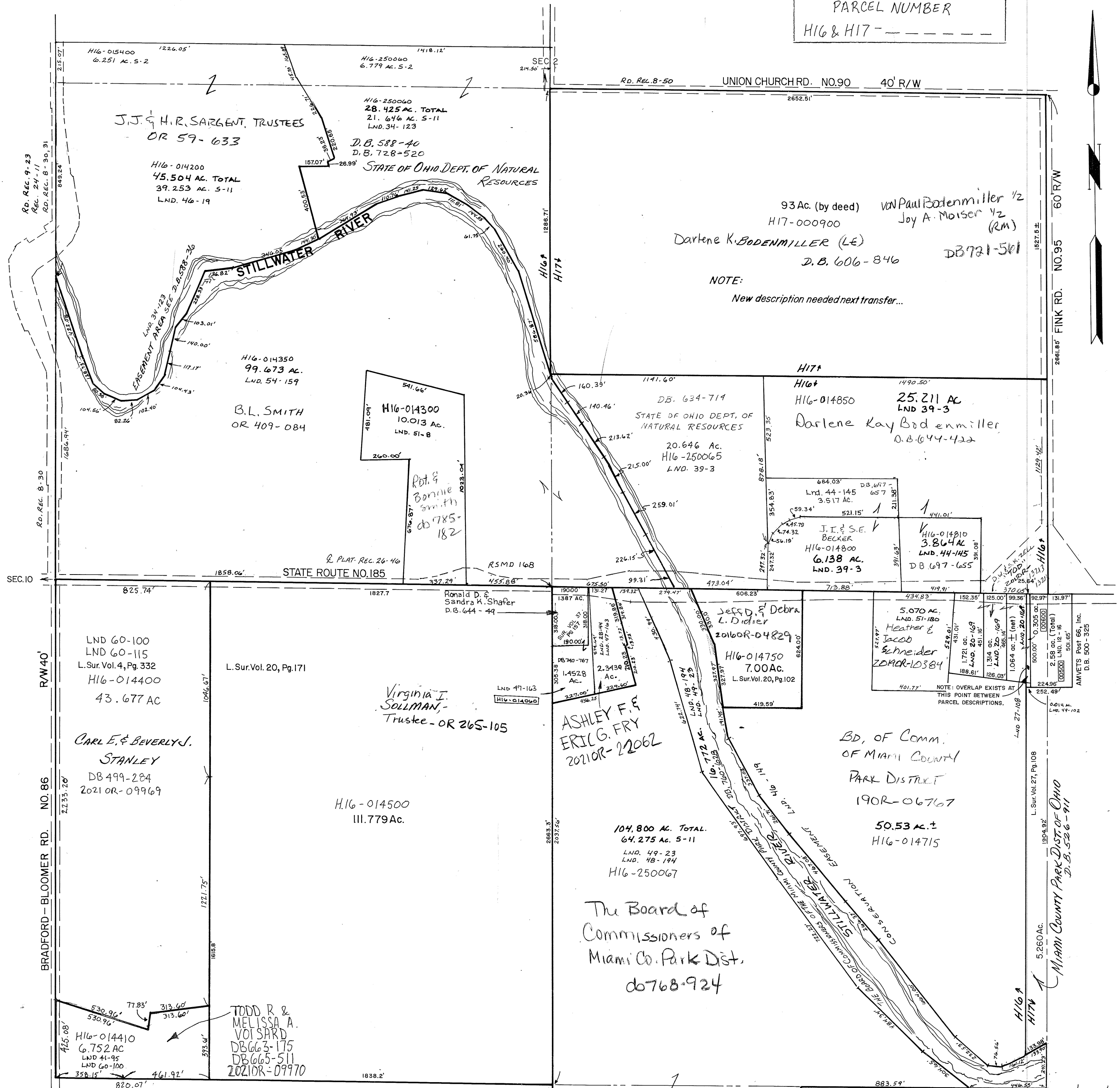
PLAT II

Section II, Town 9, Range 4

SCALE: 1" = 400'

SEC. II

PARCEL NUMBER
H16 & H17 - - - - -



NOTE:
New description needed next transfer...

REVISSED: 12/22/21

MIAMI COUNTY PARK DIST. OF OHIO
D.B. 5286-911

AMNETS Post 66, Inc.
D.B. 500-325

BD. OF COMM.
OF MIAMI COUNTY
PARK DISTRICT
190R-06767
50.53 AC. ±
H16-014715

The Board of
Commissioners of
Miami Co. Park Dist.
do 768-924

H16-014500
111.779 AC.

CARL E. & BEVERLY J.
STANLEY
DB 499-284
2021OR-09969

LND 60-100
LND 60-115
L. Sur. Vol. 4, Pg. 332
H16-014400
43.677 AC

STATE ROUTE NO. 185

B.L. SMITH
OR 409-084

H16-014350
99.673 AC.
LND. 54-159

H16-014200
45.504 AC. TOTAL
39.253 AC. S-11
LND. 46-19

J.J. & H.R. SARGENT TRUSTEES
OR 59-633

H16-014300
10.013 AC.
LND. 51-8

Robt. & Bonnie
Smith
do 785-182

STATE OF OHIO DEPT. OF
NATURAL RESOURCES
20.646 AC.
H16-250065
LND. 39-3

H16-014850
25.211 AC
LND 39-3
Darlene Kay Bodenmiller
O.B. 644-422

J.I. & S.E. BECKER
H16-014800
6.138 AC.
LND. 39-3

Heather & Jacob
Schneider
2010R-10384

Jeff D. & Debra L. Didier
2016OR-04829

H16-014750
7.00 AC.
L. Sur. Vol. 20, Pg. 102

ASHLEY F. & ERIC G. FRY
2021OR-22062

104,800 AC. TOTAL
64,275 AC. S-11
LND. 49-23
LND. 48-194
H16-250067

Virginia J. SOLLMAN,
Trustee - OR 265-105

Ronald D. & Sandra K. Shafer
D.B. 644-49

FINK RD. NO. 95

UNION CHURCH RD. NO. 90

Rd. Rec. 9-23
Rec. 24-11
Rd. Rec. 8-30, 31

Rd. Rec. 8-30

BRADFORD - BLOOMER RD. NO. 86

RW 40'

60' R/W

60' R/W

60' R/W

60' R/W

60' R/W

60' R/W

60' R/W

60' R/W

60' R/W

60' R/W

60' R/W

60' R/W

60' R/W

60' R/W

60' R/W

60' R/W

60' R/W

60' R/W

60' R/W

60' R/W

60' R/W

60' R/W

60' R/W

60' R/W

60' R/W

60' R/W

60' R/W

60' R/W

60' R/W

60' R/W

60' R/W

60' R/W

60' R/W

60' R/W

60' R/W

60' R/W

60' R/W

60' R/W

60' R/W

60' R/W

60' R/W

60' R/W

60' R/W

60' R/W

60' R/W

60' R/W

60' R/W

60' R/W

60' R/W

60' R/W

60' R/W

60' R/W

60' R/W

60' R/W