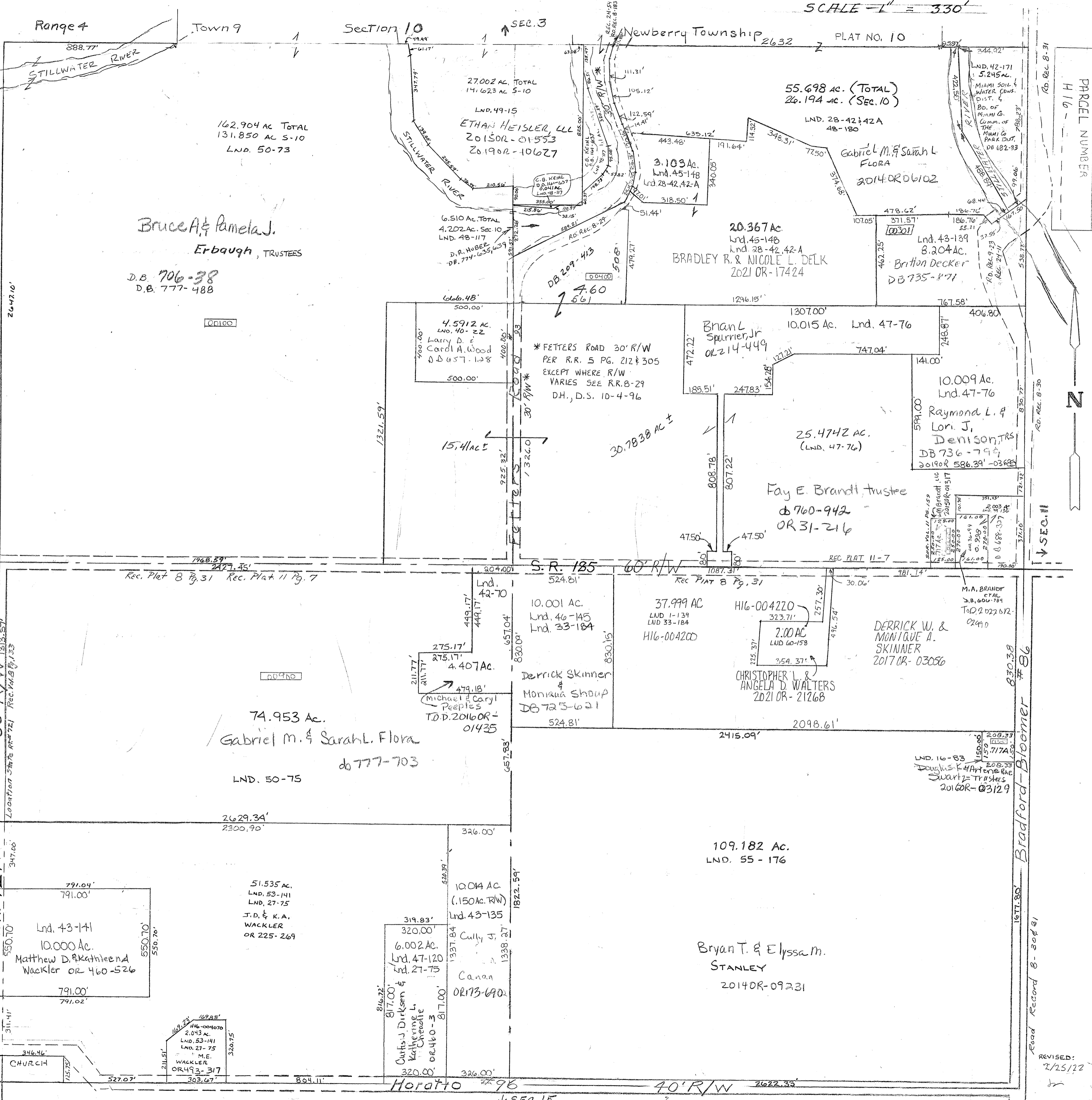


SCALE = 1" = 330'

Range 4 Town 9 Section 10 SEC. 3

Newberry Township 2632 PLAT NO. 10

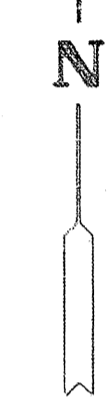


NW Cor SE Qtr. - Lnd. 46-145
 SE Cor NE Qtr. - Lnd. 47-70
 SE Cor SW Qtr. - Lnd. 47-120
 N. Pt. NE Qtr. - Lnd. 48-180
 N. Pt. NE Qtr. - Lnd. 48-117

NE Cor SW Qtr. - Lnd. 42-70
 NE Cor. NE Qtr. - Lnd. 42-171
 SE Cor. SW Qtr. - Lnd. 43-135
 E. Cor. Pt. NE Qtr. - Lnd. 43-139
 W. Pt. SW Qtr. - Lnd. 43-141
 NW Cor NE Qtr. - Lnd. 45-14B

Surveys -
 Vol. 1 page 139 - 1/2 Sec
 Vol. 2 page 72 - Whole
 " " " " 159 - SE Cor NE
 " " " " 133 Location St. R. 721
 " " " " 83 N.E. Pt. S.E

PARCEL NUMBER
 H 16



11 SEC. 11

Bradford-Bloomer #86
 Road Record B-30881

REVISED:
 2/25/22