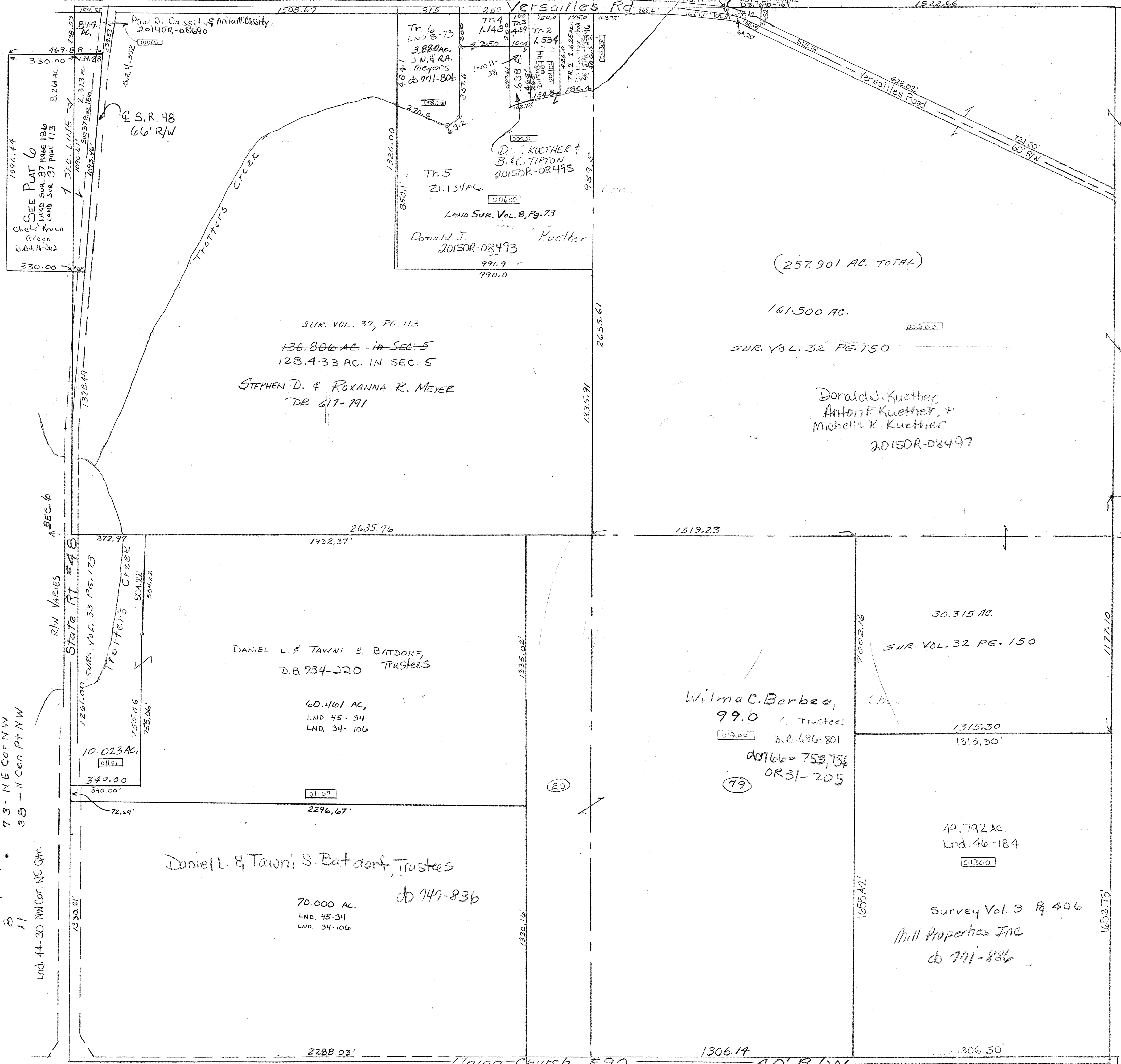


SMDA NUMBER 117-NB005



SEE PLAT 6
LAND SUR. 37 PAGE 186
LAND SUR. 37 PAGE 113
Chet & Karen Green
DB 67-342

F.S.R. 48
66' R/W

Tr. 6
LND 8-73
3,880 AC.
J.W. & R.A. Meyers
db 771-806

Tr. 4
1,148 AC

Tr. 2
1,534 AC

Tr. 5
21,134 AC.
LAND SUR. VOL. 8, PG. 73
Donald J. Kuether
2015DR-08493

D. KUETHER & B.C. TIPTON
2015DR-08495

(257,901 AC. TOTAL)

161,500 AC.

SUR. VOL. 37, PG. 113
130,806 AC. IN SEC. 5
128,433 AC. IN SEC. 5
STEPHEN D. & ROXANNA R. MEYER
DB 611-791

Donald J. Kuether,
Anton F. Kuether, &
Michelle K. Kuether
2015DR-08497

DANIEL L. & TAWNI S. BATDORF,
D.B. 734-220 TRUSTEES

60,461 AC,
LND. 45-34
LND. 34-106

Wilma C. Barbee,
99.0 Trustees
D.B. 686-801
db 766-753, 756
OR 31-205

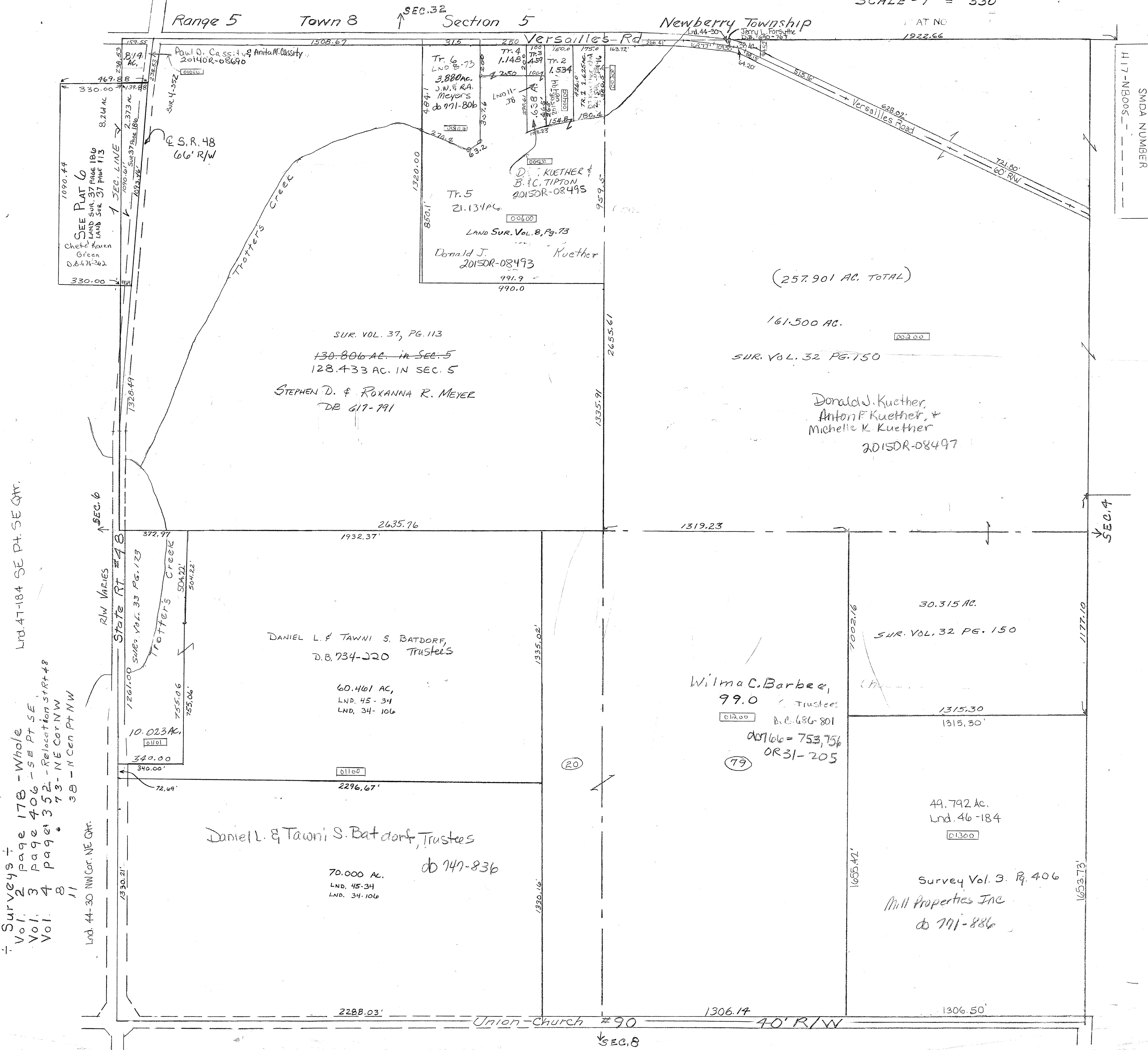
30,315 AC.
SUR. VOL. 32 PG. 150

Daniell L. & Tawni S. Batdorf, Trustees
db 747-836

70,000 AC.
LND. 45-34
LND. 34-106

49,792 AC.
Lnd. 46-184
Survey Vol. 3, Pg. 406
Mill Properties Inc
db 771-886

Surveys +
Vol. 2 page 178 - Whole
Vol. 3 page 406 - SE Pt SE
Vol. 4 page 352 - Relocation STR 48
73 - NE Cor NW
38 - N Cen Pt NW
Lnd. 44-30 NW Cor. NE QTR.



Union Church #90 40' R/W

SEC. 8