

NEWBERRY TWP.

PLAT NO. 41-C

MIAMI COUNTY, OHIO

SECTION

TOWN

RANGE

NW 1/4

36

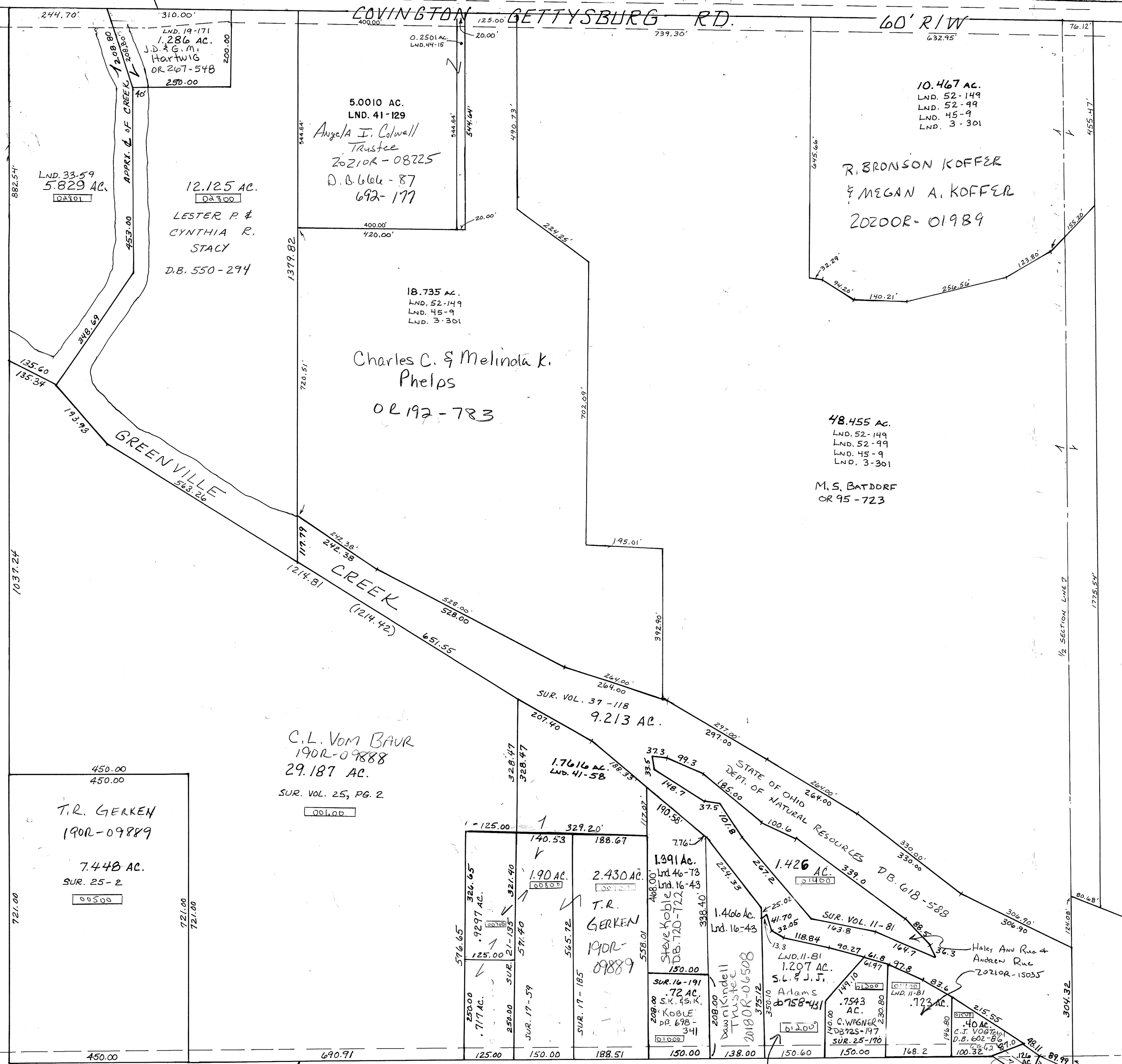
9

4

SCALE: 1" = 200'

2004 R/W
RD. REC. 9-32
REC. 25-96
2012 R/W
RD. REC. 9-26
REC. 24-13

SMDA NUMBER
H17-NB041



C.L. Vom BAUR
190R-09888
29.187 AC.
SUR. VOL. 25, PG. 2

T.R. GERKEN
190R-09889
7.448 AC.
SUR. 25-2

5.0010 AC.
LND. 41-129
Angela J. Colwell
Trustee
20210R-08725
D.B. 6666-87
692-177

18.735 AC.
LND. 52-149
LND. 45-9
LND. 3-301
Charles C. & Melinda K.
Phelps
0R 192-783

10.467 AC.
LND. 52-149
LND. 52-99
LND. 45-9
LND. 3-301
R. BRONSON KOFFER
& MEGAN A. KOFFER
20200R-01989

48.455 AC.
LND. 52-149
LND. 52-99
LND. 45-9
LND. 3-301
M.S. BATDRF
OR 95-723

2.430 AC.
T.R. GERKEN
190R-09889

1.426 AC.
SUR. VOL. 11-81
D.B. 6018-588

1.7543 AC.
C. WAGNER
SUR. 25-170

TOD
20180R-05133
H17-004800
Mabel P & Donald B. Gipe
20150R-15760
20220R-01315

REVISED 01/25/22
JA