

SCALE - 1" = 100'

Town 9

Range 4

Section 36

Newberry

Plat 41-B

SMDA NUMBER
H17-NB041B-

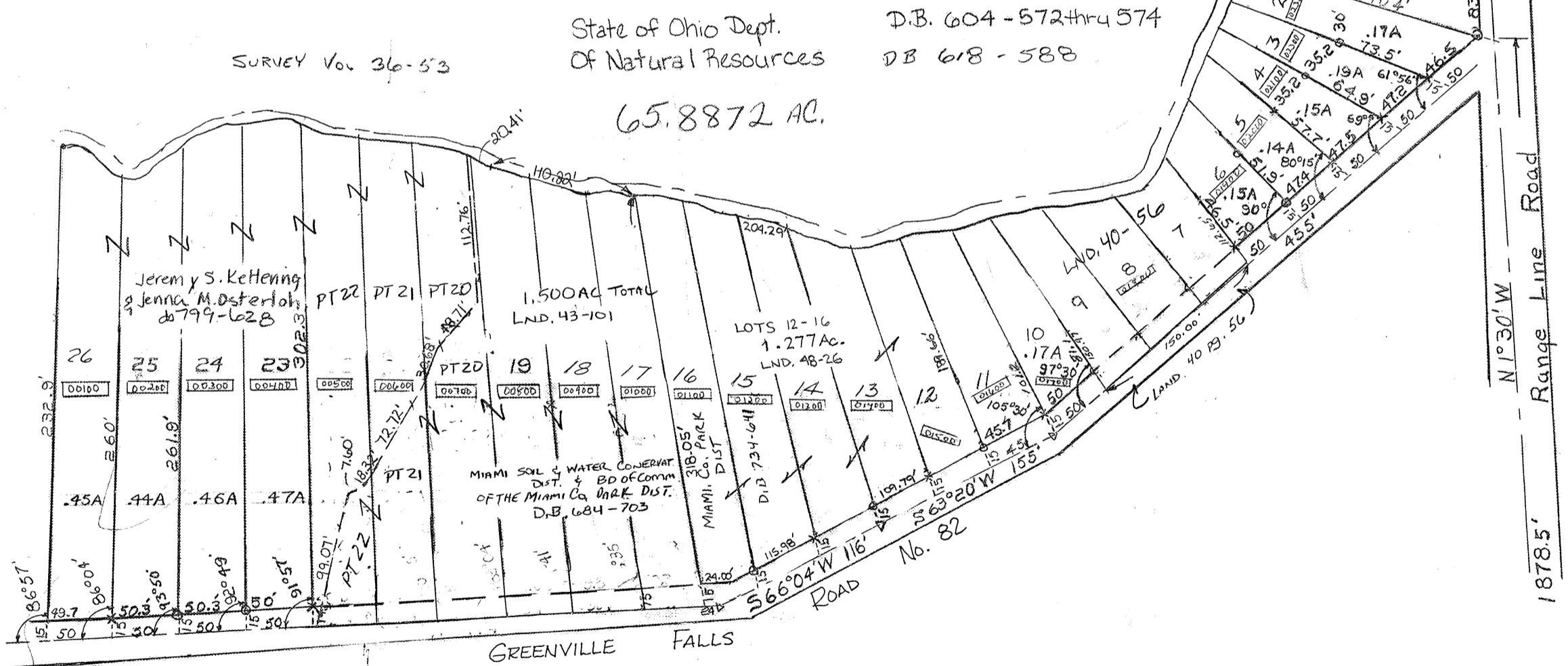
Lot	Owner	Acreage
1	Lattie E. Leeper db 763-543	.25
2	"	.17
3	"	.19
4	"	.15
5	"	.14
6	"	.15
7	WCF Rentals OR 328-144	.12
8		.15
9		.15
10	BOARD OF COMMISSIONERS OF MIAMI COUNTY PARIS DISTRICT	.17
11	OR 158-249	.21

Lots 7, 8, 9
LND. 40-56

Pleasant Ridge



Greenville Falls Pond



Pleasant Ridge - Rec. 4-5

S.E. Cor. of
Sec. 36

REVISED 01/25/2022

JW