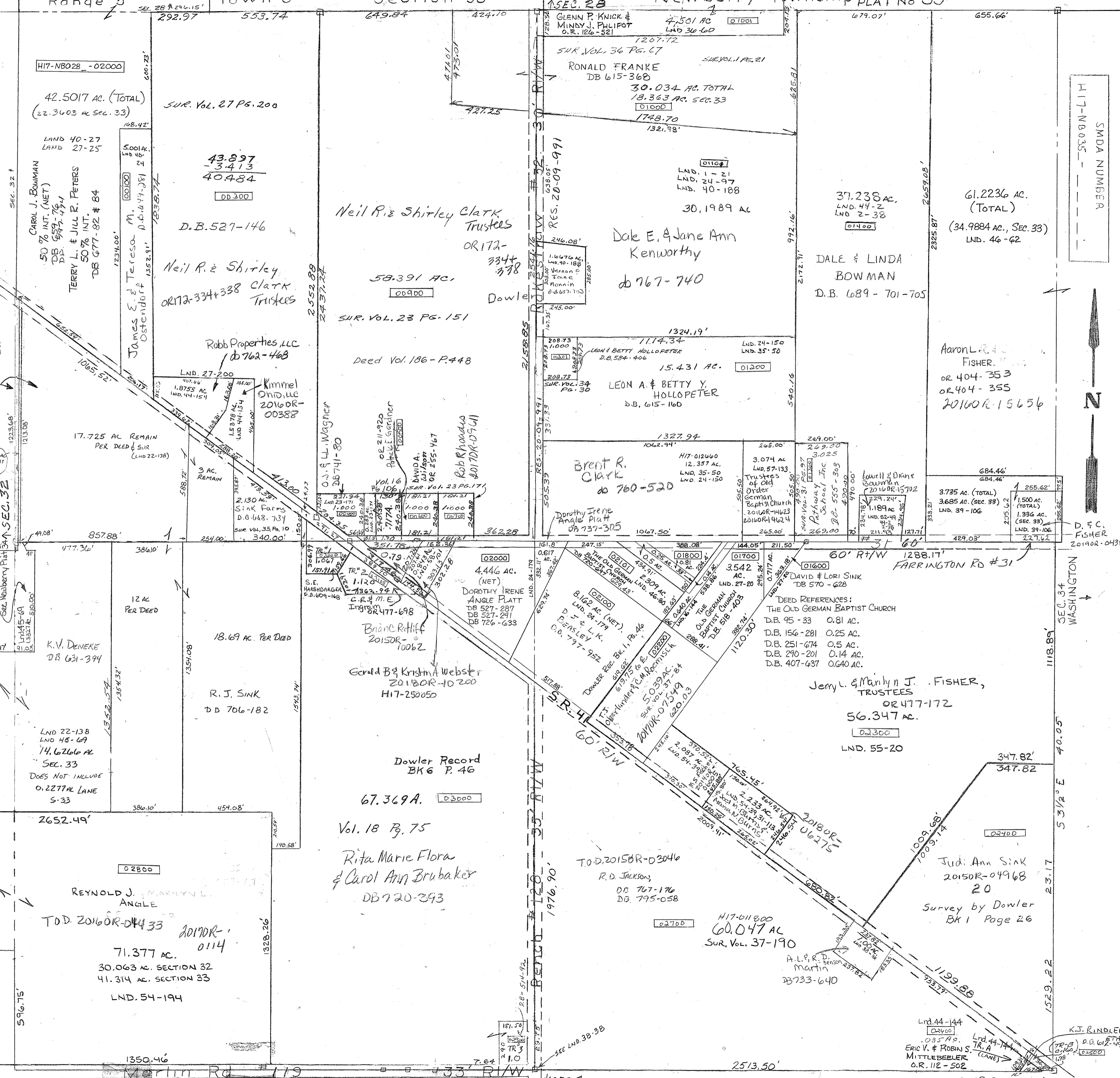


DOWLER 1-57
 Survey 2
 Vol. 2 page 73 - Whole -
 Vol. 4 page 402 - Ref. Cor. Stone
 Vol. 2 " 38 - E Side - NE,
 Vol. 16 Pg. 106 - S.E. PT. N.W.
 Vol. 16 Pg. 144 - N.W. PT. S.E.
 Vol. 18 Pg. 75 - E Side S.E.

NOTE: D.B. 706 PG. 182 DOES NOT EXCEPT OUT 0.475 AC (LND. 22-138) BUT IT SHOULD PER D.B. 479-570

Lnd. 35-50 SW Cor NE Qtr.
 Lnd. 44-144 SE Cor. SE Qtr.
 Lnd. 45-64 NW Cor SW Qtr & SW Cor NW Qtr.

REYNOLD J. MARILYN L. ANGLE
 T.O.D. 2016OR-04433
 71.377 AC.
 30.063 AC. SECTION 32
 41.314 AC. SECTION 33
 LND. 54-194



SMDA NUMBER
 H17-NB035

D. & C. FISHER
 2019OR-04319

SEC. 34
 WASHINGTON

53 1/2' E
 40.05'

23.17'

1529.22'

K.J. RINDLER
 D.B. 612-442
 TR. A
 MITTLEBEELER
 O.R. 112-502