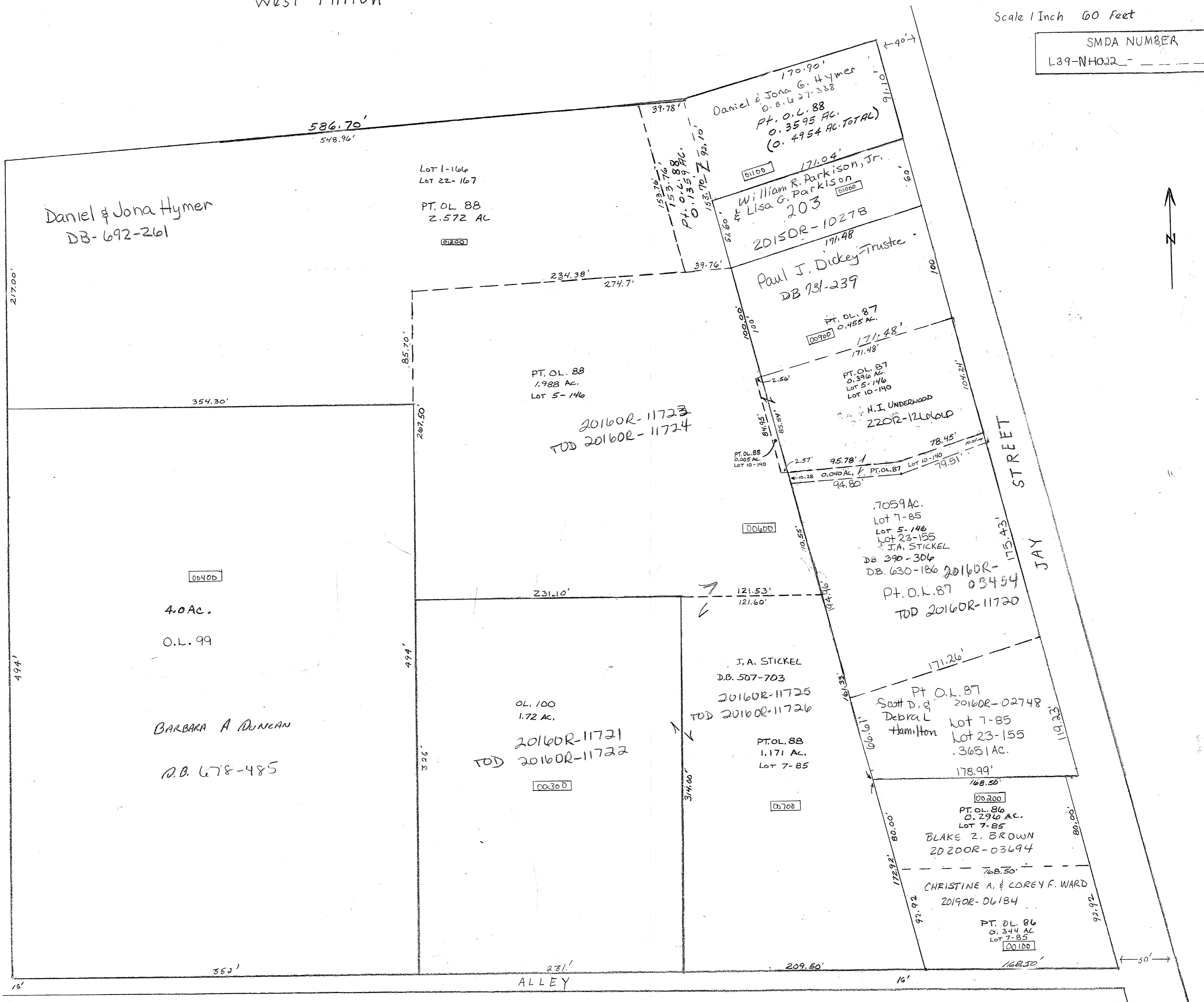


West Milton

Plat No N 22 **N22**

Scale 1 Inch 60 Feet

SMDA NUMBER
L39-NH022



Daniel & Jona Hymer
DB-692-261

Lot 1-166
Lot 22-167
PT. O.L. 88
2.572 AC.

170.90'
Daniel & Jona G. Hymer
D.B. 427-338
Pt. O.L. 88
0.3595 AC.
(0.4954 AC. TOTAL)

171.04'
William R. Parkison, Jr.
& Lisa G. Parkison
203

2015OR-10278
171.98'
Paul J. Dickey-Trustee
DB 731-239

PT. O.L. 87
0.455 AC.

PT. O.L. 87
0.396 AC.
Lot 5-146
Lot 10-140

H.I. UNDERWOOD
2202-12666D

PT. O.L. 88
0.005 AC.
Lot 10-140

95.78'
94.80'
PT. O.L. 87
Lot 10-140

7059 AC.
Lot 7-85
Lot 5-146
Lot 23-155
J.A. STICKEL
DB 390-306
D.B. 630-186

PT. O.L. 87
TOD 2016OR-11720

J.A. STICKEL
D.B. 507-703

2016OR-11725
TOD 2016OR-11726

PT. O.L. 88
1.171 AC.
Lot 7-85

PT. O.L. 87
Scott D. & Debra L Hamilton
2016OR-02748
Lot 7-85
Lot 23-155
.3651 AC.

PT. O.L. 86
0.296 AC.
Lot 7-85
BLAKE Z. BROWN
2020OR-03694

CHRISTINE A. & COREY F. WARD
2019OR-06184

PT. O.L. 86
0.344 AC.
Lot 7-85

4.0 AC.
O.L. 99

BARBARA A DUNCAN
D.B. 678-485

OL. 100
1.72 AC.
TOD 2016OR-11721
TOD 2016OR-11722

ALLEY

JAY STREET

