

RANGE 11

TOWN 2

SECTION 19

LOSTCREEK TOWNSHIP

PLAT NO. 16

SCALE: 1" = 400'

DETAIL 1" = 200'

REC. 9-99 RUGGED HILL EST.

PARCEL NUMBER

F10 -

SURVEYS S.E. QUARTER

SUR. 3 - 88 SUR. 10 - 180 SUR. 16 - 7 SUR. 16 - 184 SUR. 17 - 146 SUR. 18 - 44 SUR. 19 - 36 SUR. 30 - 131 SUR. 35 - 174 Lnd. 42-105

REC. 9-99 REC. 23-38 RO. REC. 9-17

- 1 1,000 AC. FIO-034800 M.E. WINTROW D.B. 771-318
2 1,015 AC. FIO-036801 J.B. & M.L. MACY D.B. 670-791
3 1,015 AC. FIO-036802 Rbt A. & M. PHILLIPS 20180R-08780
4 1,015 AC. FIO-036803 D.L. & P.J. WIFORD D.B. 504-749
5 0.717 AC. FIO-036804 Jason L. Dyer 20220R-01763
6 0.717 AC. FIO-036805 D.A. & S.L. Buchert 20180R-12834
7 0.717 AC. FIO-036806 D.S. & E. C. C. 20170R-16504
8 250.00' FIO-027500 S.C. Riddle 20150R-14649
9 0.717 AC. FIO-027600 J.W. ATKINSON 20170R-11547

N.E. QUARTER

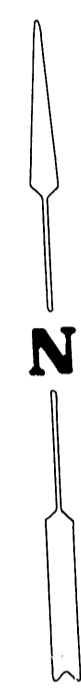
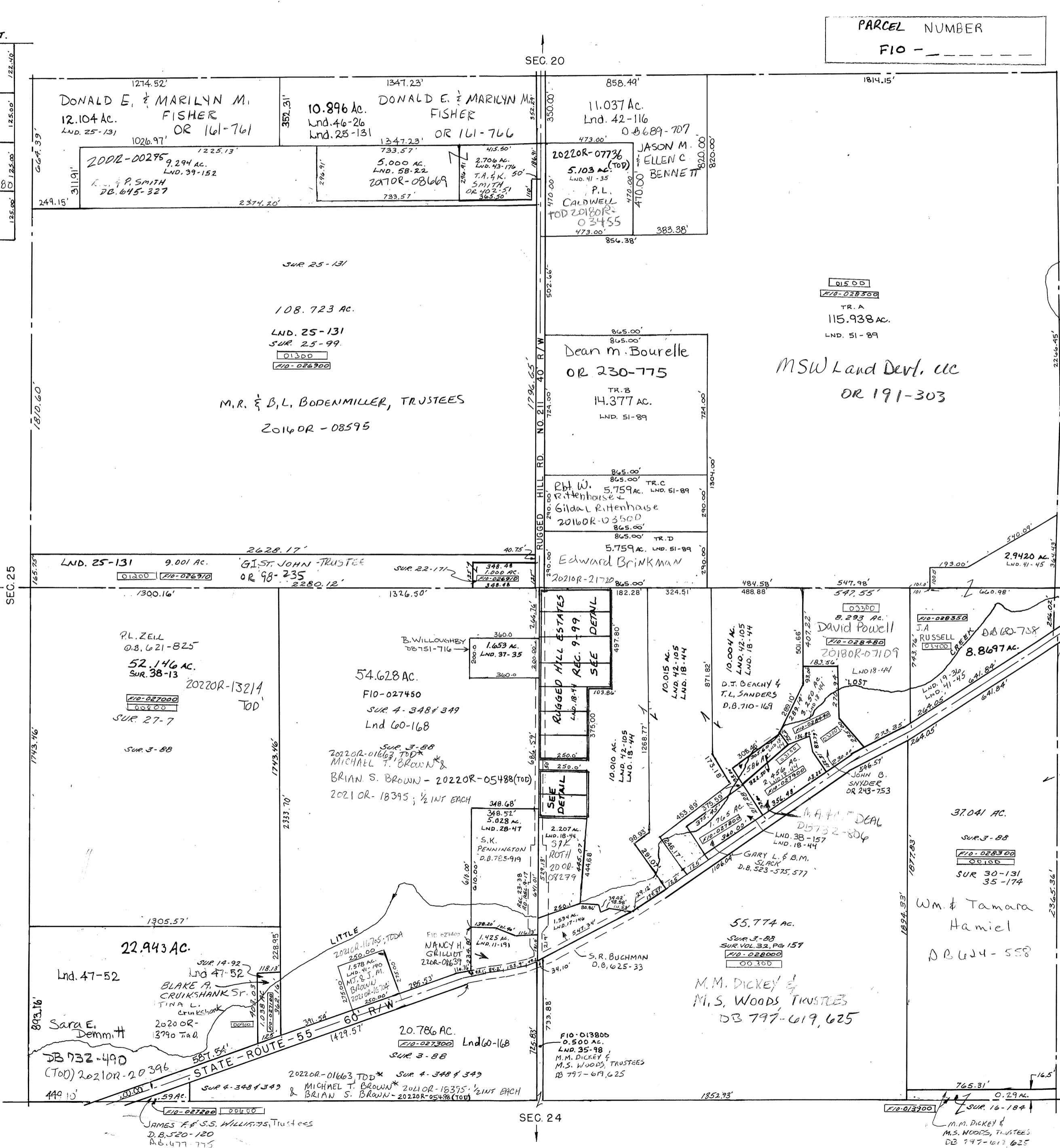
LND 41-35 41-45 Lnd. 42-116 LND. 51-89

S.W. QUARTER

SUR. 3 - 88 SUR. 4 - 348 & 349 SUR. 11 - 191 SUR. 14 - 92 SUR. 27 - 7 SUR. 28 - 47 REC. 9-99 SUR. VOL. 32-157 SUR. VOL. 37-35 LND. 41-190 Lnd. 47-52

N.W. QUARTER

SUR. 22-171 SUR. 25-99 SUR. 25-131 LND. 39-152 LND. 43-176 Lnd. 46-26 LND. 58-22



SEC. 13

SEC. 20

SEC. 24

REVISED: 08/16/22

JAV