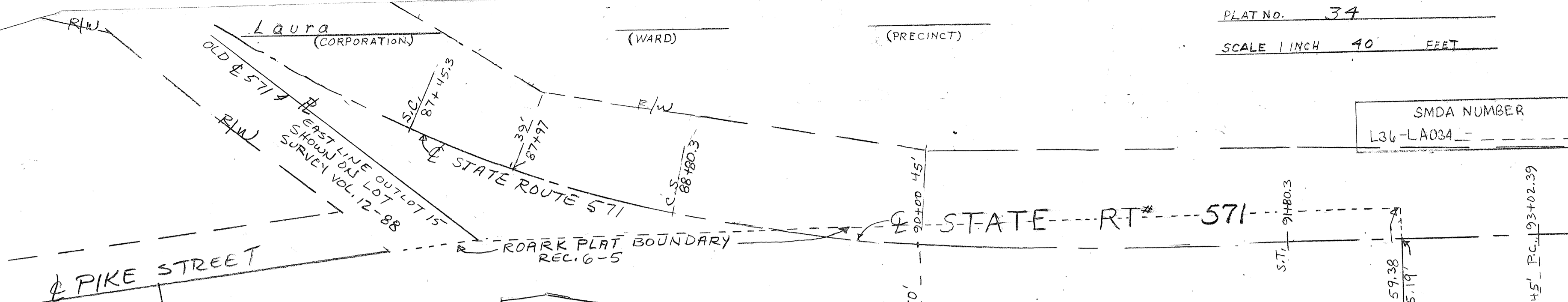


SMDA NUMBER
L36-LA034



112.13 DB 590-617
#137
Michael L. Overla
2014 OR-11996

112
#136
Timothy & Angela Studebaker
db 749-459 Vol. 9 Pg. 116

112
#135
DONALD C. & JERRY J. EDMUNDS

112
#134
David M. Yeakel
OR 310-203 Vol. 9 Pg. 51

124.25
#138
SUNSHINE VALLEY INVESTMENTS, LLC
2019 OR-09285
Lot BK 6-181

132.65
#139
Chester E. & Kay E. Miles
DB 716-612

123.6
#140
CHARLES S FINE
KAREN S JAY
JOHN P FINE
DAVID W FINE
2020 OR-19603

114.8
#141
Susan R. Wieser
OR 74-491

59.25 72.75
#147
Kyle A. SWARTZ
2020 OR-04827

12.5
#146
GLEN L. III & JESSIE Mc SPARRAN
2020 OR-19116

119.50
#145
Douglas E. Wright
2015 OR-02054

113.40
#144
LOT BK. 13 PG. 111

50.05
#123
A. J. REX
DB 793-712
Lot BK. 10-PG. 177

112.00
#124
LOT BK. 12 PG. 154
C.R. Klepinger
OR 291-963
2015 OR-13055

112.00
#125
Bonnie J. RANDOLPH
2018 OR-08729
TDD 2018 OR-09946

112
#126
MARY E. HEFFNER
DB 785-663
OR 152-881

R/W ESTABLISHED AS EASEMENT (HWY) IN RECORDER'S MISCELLANEOUS BOOK 9 PAGE 201 (1948 PARCEL 18)

SEE REC. BK. 6 Pg. 117 (ANNEXATION)
REC. BK. 6 PG. 5