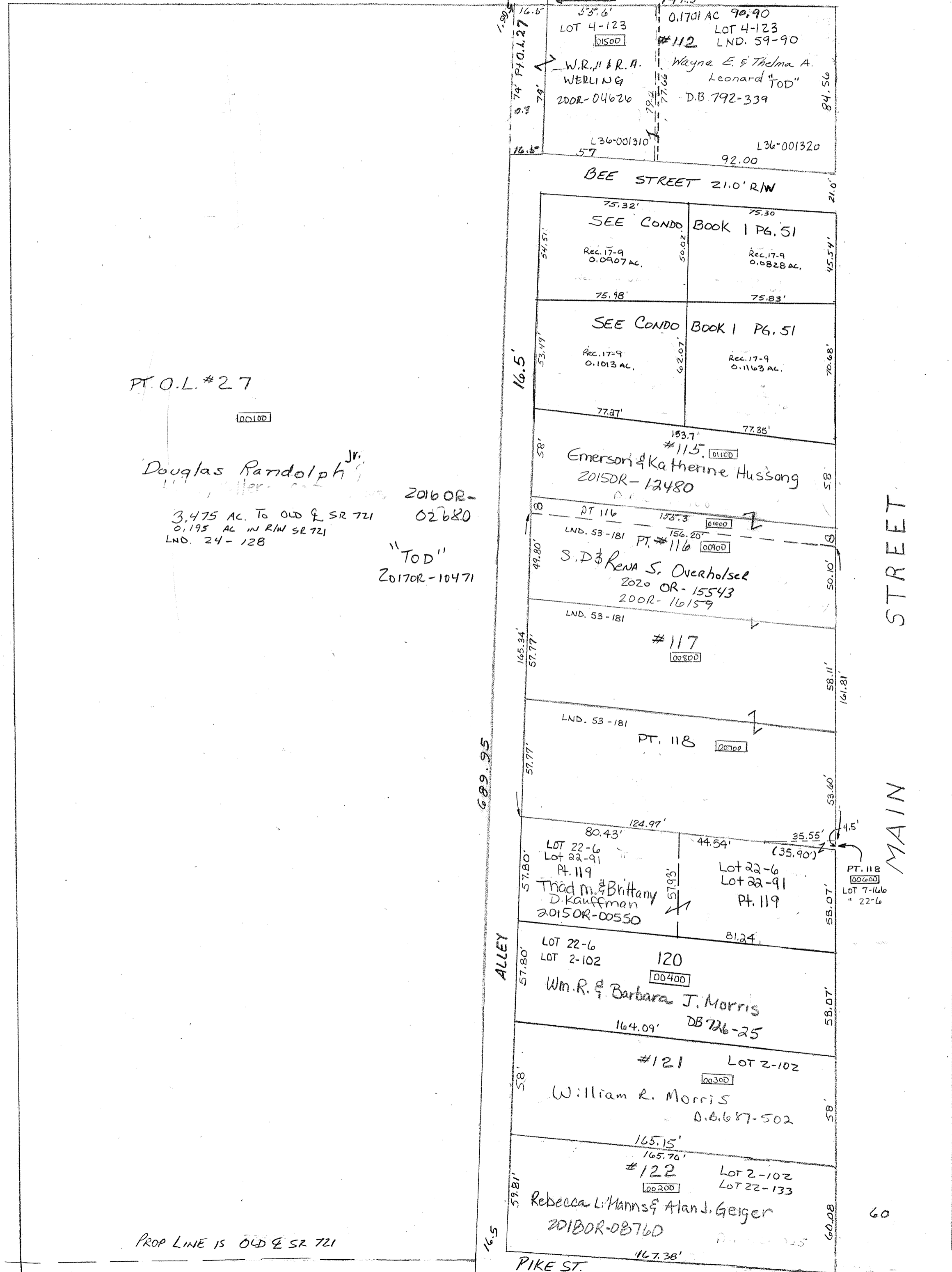


SMIDA NUMBER  
L36-LA013



Condo Book 1, 51 & 51A  
Lots 178-181  
Rec. 3 pg. 63  
Rec. 16 pg. 58  
Rec. 17 pg. 9



PT. O.L. #27

Douglas Randolph Jr.  
3.475 AC. TO OLD & SR 721  
0.195 AC. IN R/W SR 721  
LND. 24-128  
2016 OR-02680  
"TOD"  
2017 OR-10471

BEE STREET 21.0' RW  
MAIN STREET  
ALLEY  
PIKE ST.

PROP LINE IS OLD & SR 721