

Fletcher
(corporation)

Plat No 35

Scale 1 Inch 40 Feet

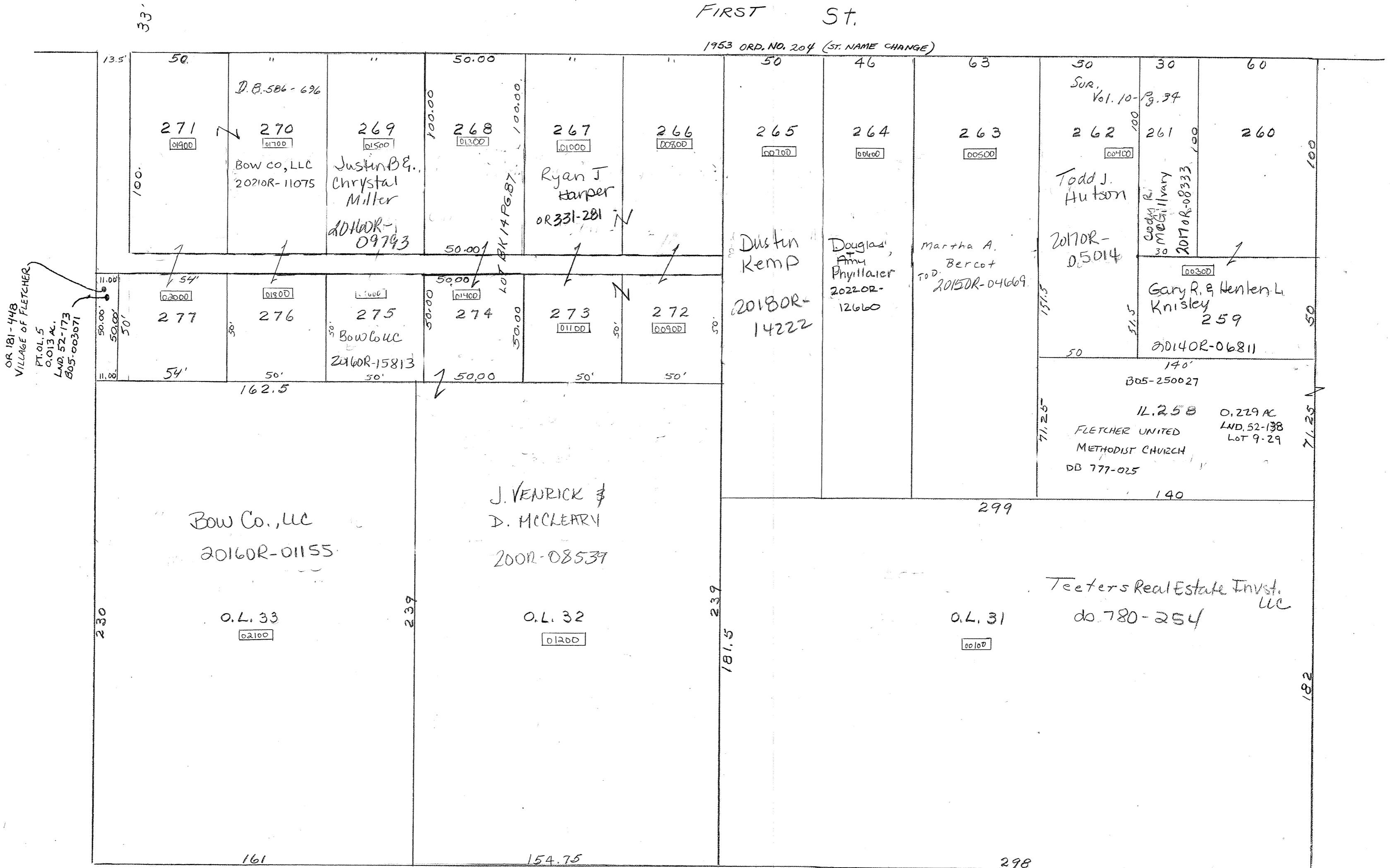
PARCEL NUMBER
B05-

North St.

REC. BK. 3 PG 10

FIRST St.

1953 ORD. NO. 204 (ST. NAME CHANGE)



OR 181-448
VILLAGE OF FLETCHER
PT. 0.15
0.013 AC.
LND. 52-173
B05-003071