

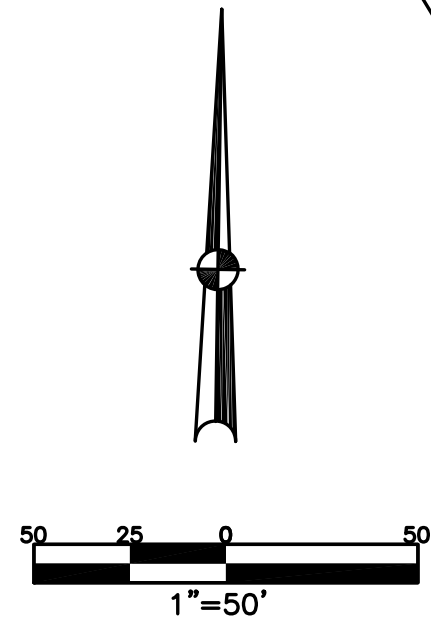
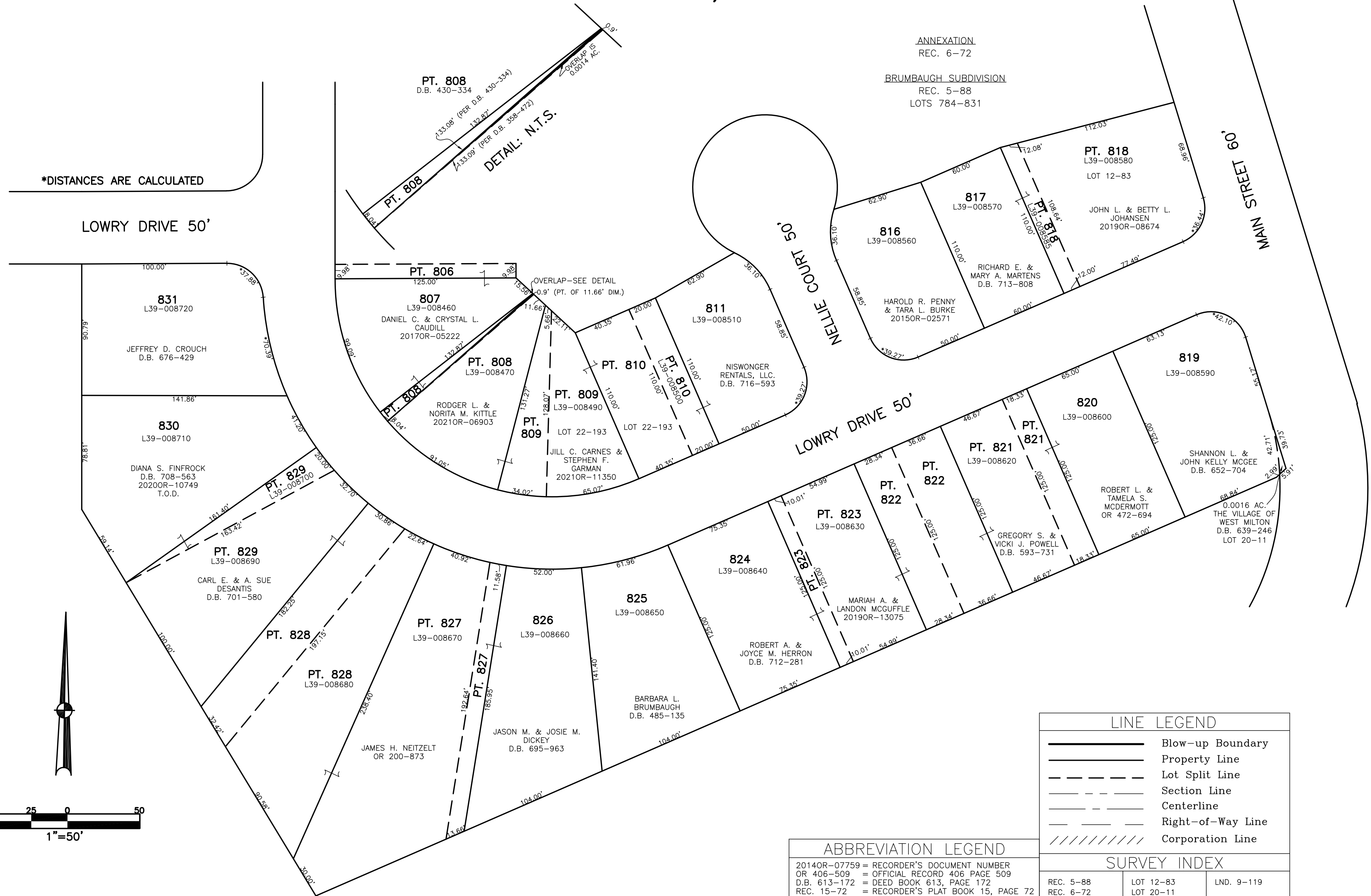
SECTION 21
TOWN 6
RANGE 5

VILLAGE OF WEST MILTON
MIAMI COUNTY, OHIO

PARCEL ID NUMBER
L39-008590

PLAT S 16

*DISTANCES ARE CALCULATED



ANNEXATION
REC. 6-72
BRUMBAUGH SUBDIVISION
REC. 5-88
LOTS 784-831

LINE LEGEND	
	Blow-up Boundary
	Property Line
	Lot Split Line
	Section Line
	Centerline
	Right-of-Way Line
	Corporation Line

ABBREVIATION LEGEND	
2014OR-07759	= RECORDER'S DOCUMENT NUMBER
OR 406-509	= OFFICIAL RECORD 406 PAGE 509
D.B. 613-172	= DEED BOOK 613, PAGE 172
REC. 15-72	= RECORDER'S PLAT BOOK 15, PAGE 72
LND. 33-15	= LAND SURVEY VOLUME 33, PAGE 15
LOT 19-12	= LOT SURVEY VOLUME 19, PAGE 12
R.R. 8-29	= ROAD RECORD VOLUME 8, PAGE 29
R/W	= RIGHT OF WAY
C	= CENTERLINE
AC.	= ACRES
TWP.	= TOWNSHIP
TR.	= TRACT
IL	= INLOT

SURVEY INDEX		
REC. 5-88	LOT 12-83	LND. 9-119
REC. 6-72	LOT 20-11	
REC. 6-64	LOT 22-193	

PREPARED BY: MIAMI COUNTY ENGINEER'S MAP DEPARTMENT
PAUL P. HUELSKAMP, P.E., P.S., COUNTY ENGINEER
DATE: MARCH 2, 2015 MB
REVISED: 6/29/2021 MSTORMS