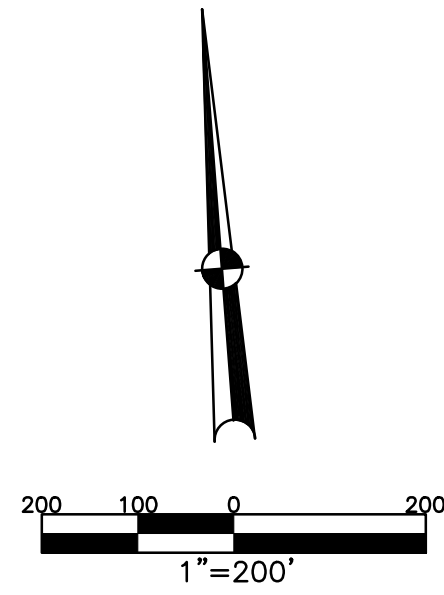


ELIZABETH TWP.  
MIAMI COUNTY, OHIO

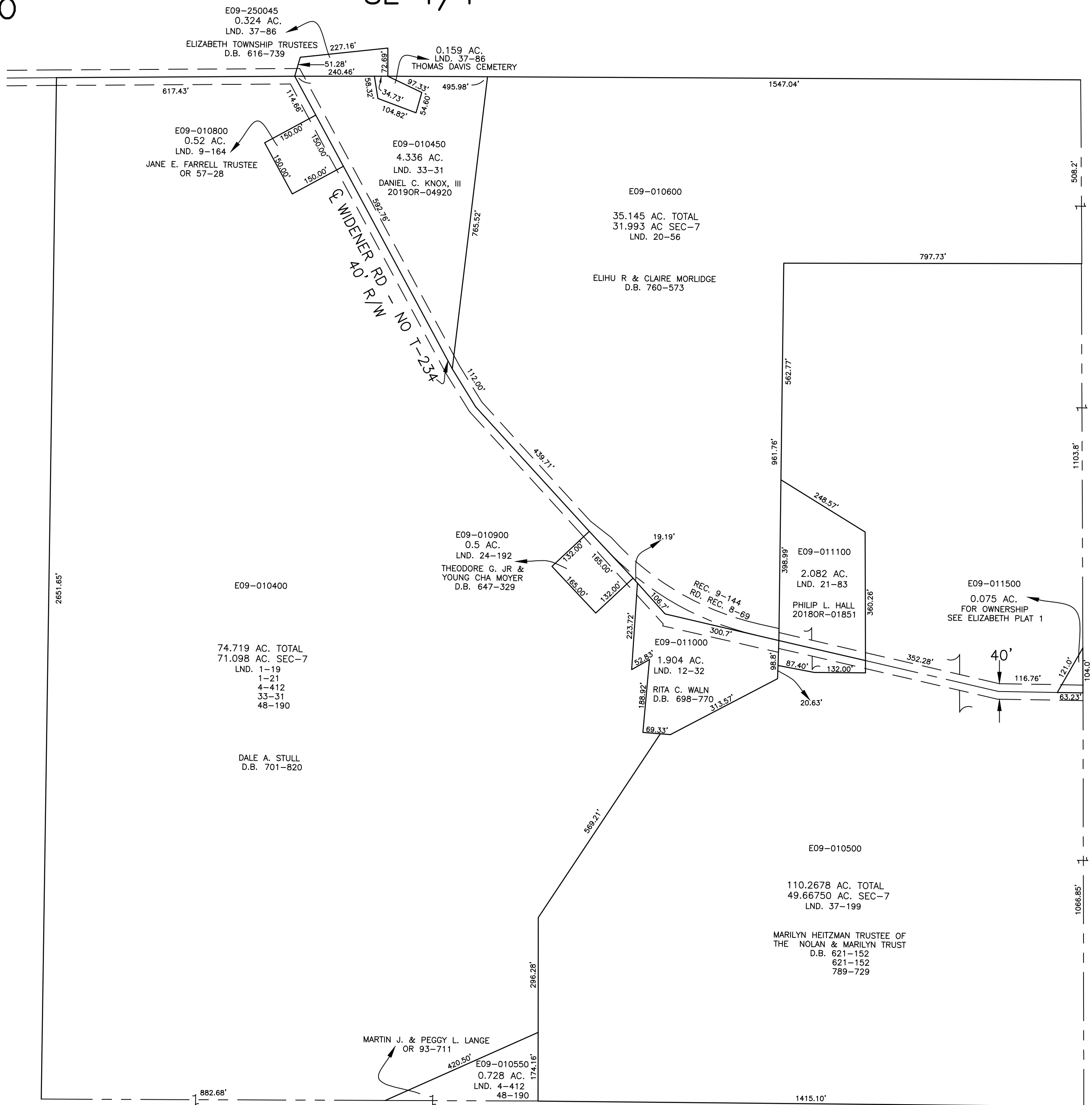
SECTION 7 TOWN 2 RANGE 10  
SE 1/4

PARCEL NUMBER  
E09-\_\_\_\_\_

PLAT 6-A



ABBREVIATION LEGEND		
2014OR-07759	= RECORDER'S DOCUMENT NUMBER	
OR 257-619	= OFFICIAL RECORD 257 PAGE 619	
D.B. 613-172	= DEED BOOK 613, PAGE 172	
REC. 15-72	= RECORDER'S PLAT BOOK 15, PAGE 72	
LND. 33-15	= LAND SURVEY VOLUME 33, PAGE 15	
LOT 19-12	= LOT SURVEY VOLUME 19, PAGE 12	
R.R. 8-29	= ROAD RECORD VOLUME 8, PAGE 29	
R/W	= RIGHT OF WAY	
CL	= CENTERLINE	
AC.	= ACRES	
TWP.	= TOWNSHIP	
TR.	= TRACT	
Ⓢ	= LOT CREATED BY RECORDER'S PLAT	
LINE LEGEND		
	Blow-up Boundary	
	Property Line	
	Lot Split Line	
	Section Line	
	Centerline	
	Right-of-Way Line	
	Corporation Line	
SURVEY INDEX		
LND. 1-19	REC. 9-144	
LND. 1-21	RD. REC. 8-69	
LND. 4-412		
LND. 9-164		
LND. 12-32		
LND. 18-162		
LND. 20-56		
LND. 21-83		
LND. 24-192		
LND. 33-31		
LND. 34-82		
LND. 37-86		
LND. 37-199		
LND. 48-190		
LND. 51-167		



PREPARED BY: MIAMI COUNTY ENGINEER'S MAP DEPARTMENT  
PAUL P. HUELSKAMP, P.E., P.S., COUNTY ENGINEER  
DATE: APRIL 02, 2019 KDIGILORMO  
REVISED: May 15, 2019 DSTUMPPF