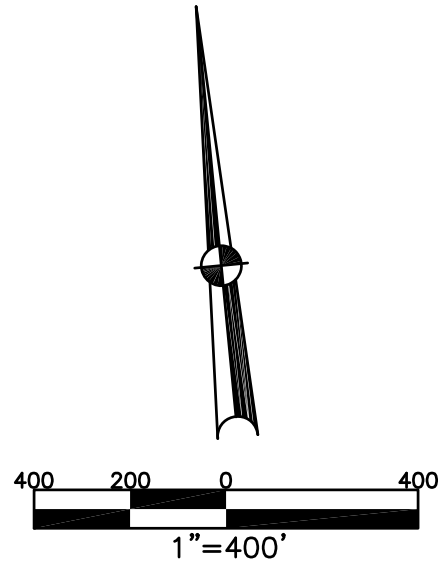


ELIZABETH TOWNSHIP  
MIAMI COUNTY, OHIO

SECTION 2 TOWN 2 RANGE 10

PARCEL NUMBER  
E09-\_\_\_\_\_

PLAT 2



ABBREVIATION LEGEND		
20140R-07759	=	RECORDER'S DOCUMENT NUMBER
OR 257-619	=	OFFICIAL RECORD 257 PAGE 619
D.B. 613-172	=	DEED BOOK 613, PAGE 172
REC. 15-72	=	RECORDER'S PLAT BOOK 15, PAGE 72
LND. 33-15	=	LAND SURVEY VOLUME 33, PAGE 15
LOT 19-12	=	LOT SURVEY VOLUME 19, PAGE 12
R.R. 8-29	=	ROAD RECORD VOLUME 8, PAGE 29
R/W	=	RIGHT OF WAY
C	=	CENTERLINE
AC.	=	ACRES
TWP.	=	TOWNSHIP
TR.	=	TRACT
②	=	LOT CREATED BY RECORDER'S PLAT

LINE LEGEND	
	Blow-up Boundary
	Property Line
	Lot Split Line
	Section Line
	Centerline
	Right-of-Way Line
	Corporation Line

SURVEY INDEX		
NORTHEAST QUARTER		
LND 1-226	LND 34-119	
LND 2-188	LND 38-10	
LND 3-32	LND 47-118	
LND 3-40	LND 50-134	
LND 4-102	LND 51-141	
LND 18-136	LND 52-77	
LND 20-68	LND 53-85	
LND 24-134		

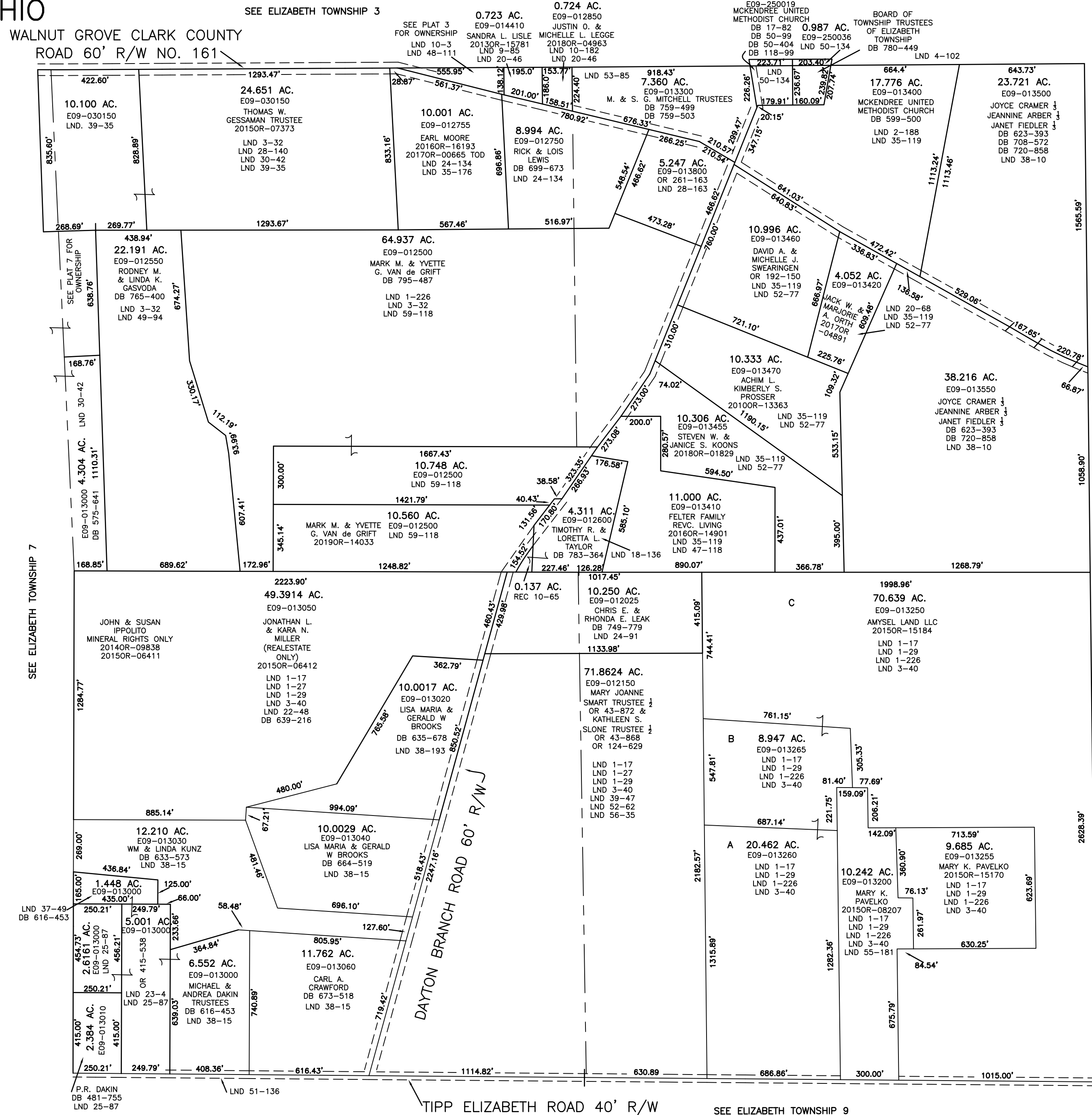
SOUTHEAST QUARTER		
LND 1-17	LND 56-35	
LND 1-27	LND 56-189	
LND 1-29		
LND 1-226		
LND 3-40		
LND 24-91		
LND 39-47		
LND 52-62		
LND 55-181		

SOUTHWEST QUARTER		
LND 1-17	LND 38-15	
LND 1-27	LND 38-193	
LND 1-29	LND 39-47	
LND 1-226	LND 51-136	
LND 3-40	LND 52-62	
LND 22-48	LND 56-35	
LND 23-4		
LND 24-91		
LND 25-97		
LND 37-49		

NORTHWEST QUARTER		
LND 1-226	LND 28-140	REC 10-65
LND 3-32	LND 30-42	R R 8-71
LND 9-85	LND 35-176	
LND 10-3	LND 39-35	
LND 10-182	LND 48-111	
LND 18-136	LND 49-94	
LND 20-46	LND 51-141	
LND 24-134		



PREPARED BY: MIAMI COUNTY ENGINEER'S MAP DEPARTMENT  
PAUL P. HUELSKAMP, P.E., P.S., COUNTY ENGINEER  
DATE: NOVEMBER 21, 2019 MBR  
REVISED: NOVEMBER 25, 2019 MBROMLEY

SEE ELIZABETH TOWNSHIP 9