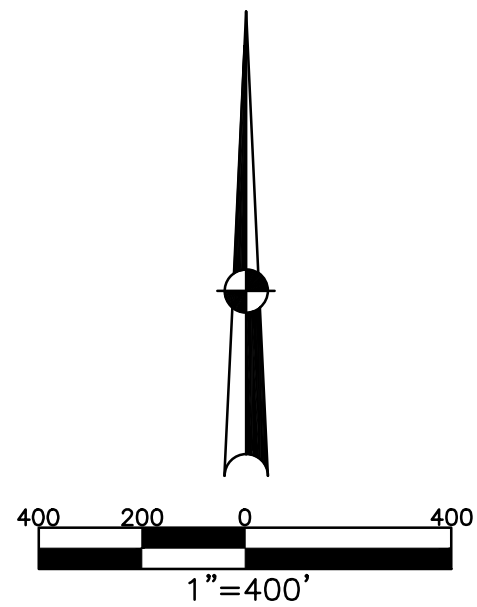


MIAMI COUNTY, OHIO



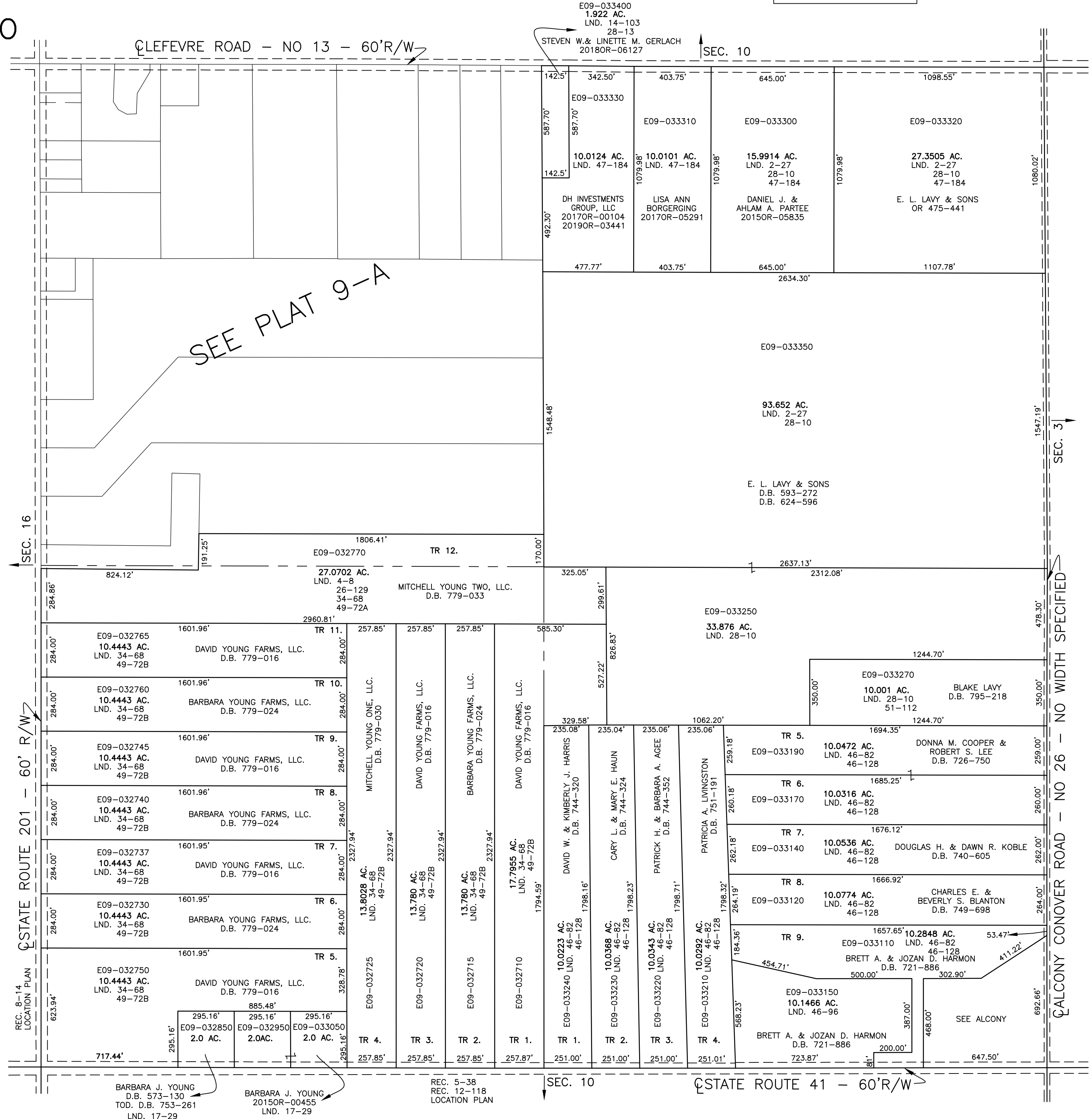
ABBREVIATION LEGEND	
2014OR-07759	= RECORDER'S DOCUMENT NUMBER
OR 257-619	= OFFICIAL RECORD 257 PAGE 619
D.B. 613-172	= DEED BOOK 613, PAGE 172
REC. 15-72	= RECORDER'S PLAT BOOK 15, PAGE 72
LND. 33-15	= LAND SURVEY VOLUME 33, PAGE 15
LOT 19-12	= LOT SURVEY VOLUME 19, PAGE 12
R.R. 8-29	= ROAD RECORD VOLUME 8, PAGE 29
R/W	= RIGHT OF WAY
CL	= CENTERLINE
AC.	= ACRES
TWP.	= TOWNSHIP
TR.	= TRACT
Ⓢ	= LOT CREATED BY RECORDER'S PLAT

LINE LEGEND	
	Blow-up Boundary
	Property Line
	Lot Split Line
	Section Line
	Centerline
	Right-of-Way Line
	Corporation Line

SURVEY INDEX	
NORTHEAST QUARTER	
LND. 1-242	
LND. 2-27	
LND. 14-103	
LND. 28-10	
LND. 28-13	
LND. 47-184	
SOUTHEAST QUARTER	
LND. 1-242	REC. 5-38
LND. 3-62	REC. 12-118
LND. 23-39	
LND. 26-129	
LND. 28-10	
LND. 46-96	
LND. 46-82	
LND. 46-128	
SOUTHWEST QUARTER	
LND. 1-242	REC. 5-38
LND. 4-8	REC. 8-14
LND. 17-29	REC. 12-118
LND. 26-129	
LND. 34-68	
LND. 34-1	
LND. 49-72B	
NORTHWEST QUARTER	



PREPARED BY: MIAMI COUNTY ENGINEER'S MAP DEPARTMENT  
 PAUL P. HUELSKAMP, P.E., P.S., COUNTY ENGINEER  
 DATE: APRIL 12, 2019 KD  
 REVISED: July 18, 2019 ASMITH