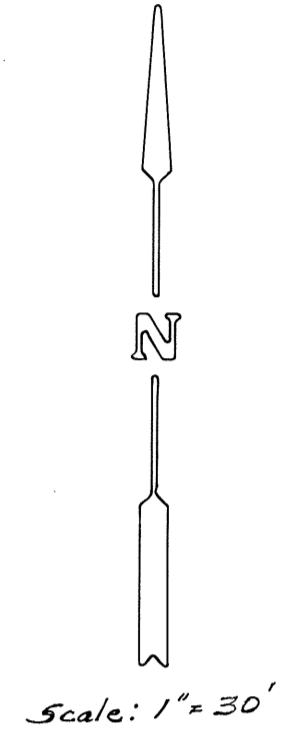
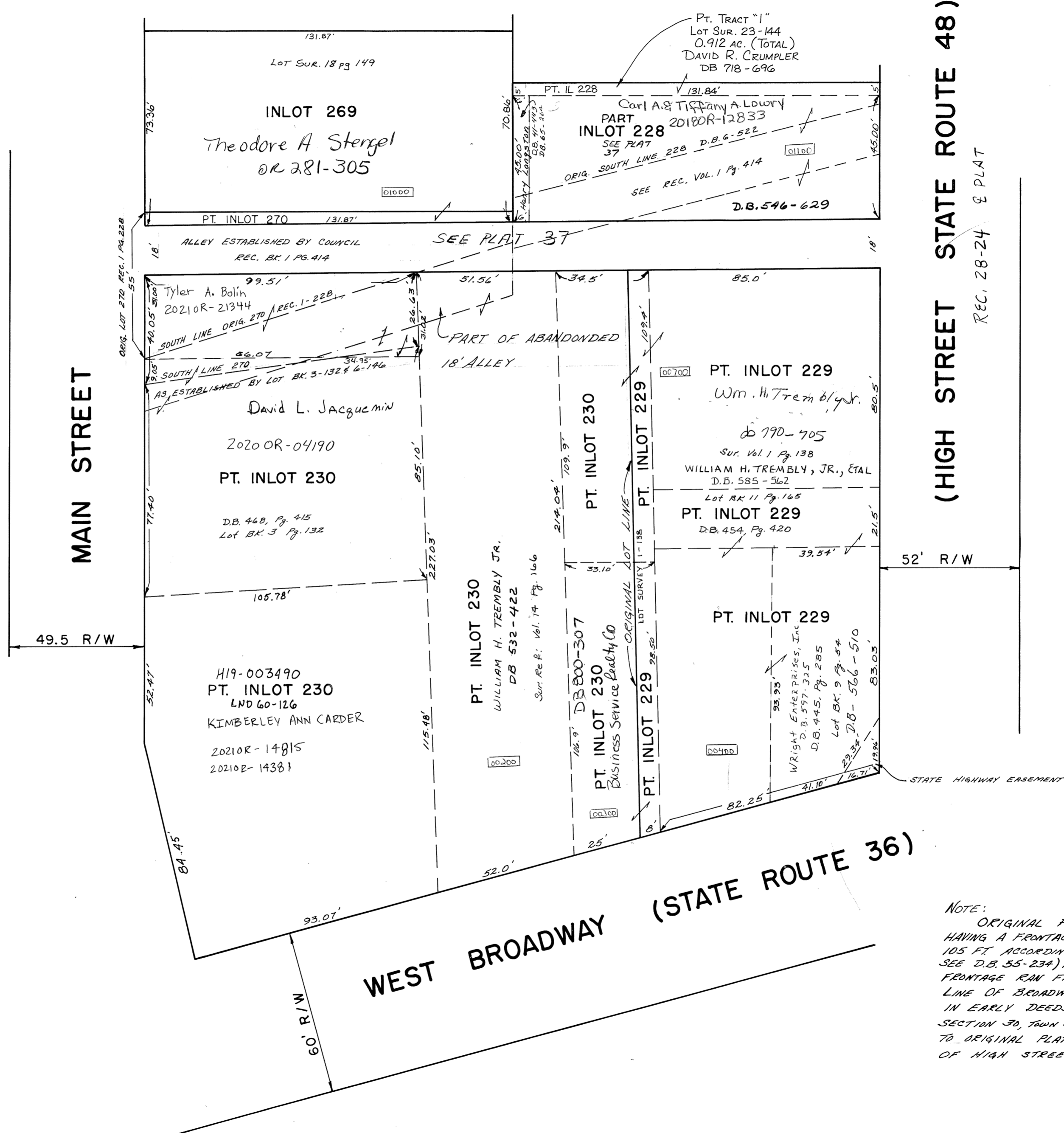


# COVINGTON

# PLAT NO. 36

PARCEL NUMBER  
H19- \_\_\_\_\_



MAIN STREET

49.5 R/W

WEST BROADWAY (STATE ROUTE 36)

STATE HIGHWAY EASEMENT

NOTE:  
 ORIGINAL PLAT OF INLOT 229 SHOWS LOT HAVING A FRONTAGE OF 105 FT, HOWEVER THE 105 FT ACCORDING TO EARLY DEEDS (FOR EXAMPLE SEE D.B. 55-234) INDICATE THE 105 FT. OF FRONTAGE RAN FROM SECTION LINE ALONG NORTH LINE OF BROADWAY. THE SECTION LINE MENTIONED IN EARLY DEEDS IS THE EAST LINE OF SECTION 30, TOWN 8, RANGE 5, AND IS, ACCORDING TO ORIGINAL PLATS, EAST OF THE WEST LINE OF HIGH STREET.