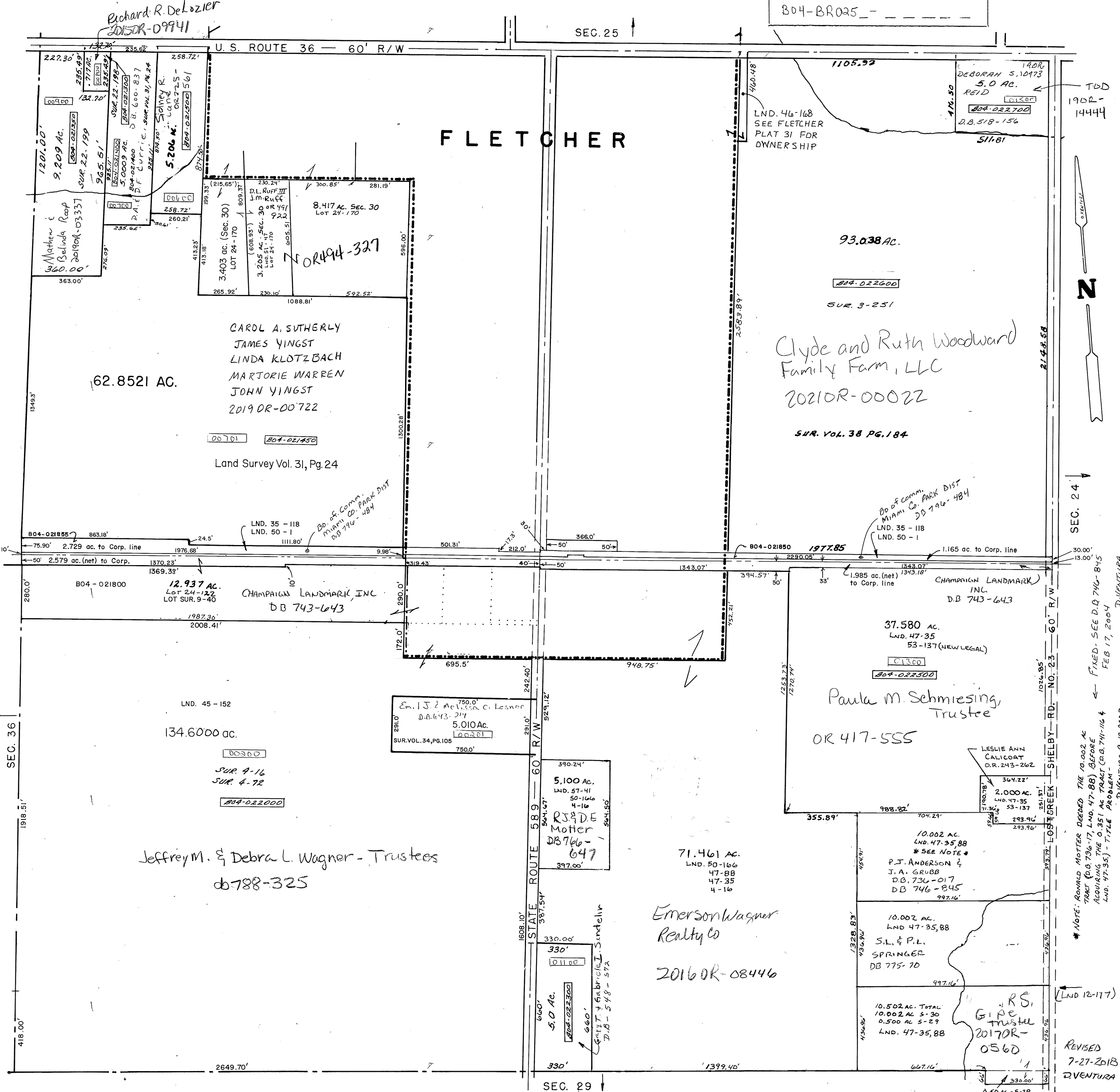


SCALE: 1" = 400'

SMDA NUMBER  
804-BR025\_-

| SURVEYS   |  |
|---|--|
| <p><b>S. E. QUARTER</b></p> <p>SUR. 4-16<br/>SUR. 12-117<br/>SUR. 35-118<br/>LND. 47-35<br/>LND. 47-88<br/>LND. 50-166<br/>LND. 53-137<br/>LND. 57-41</p> |  |
| <p><b>N. E. QUARTER</b></p> <p>SUR. 3-251<br/>SUR. 35-118<br/>SUR. 38-184<br/>LND. 46-168<br/>LND. 50-1</p>   |  |
| <p><b>S. W. QUARTER</b></p> <p>SUR. 4-16<br/>SUR. 4-72<br/>LOT BK. 9-40<br/>Sur. Vol. 34, Pg. 105<br/>SUR. 35-118<br/>LND. 45-152<br/>LOT 24-122</p>      |  |
| <p><b>N. W. QUARTER</b></p> <p>SUR. 22-198<br/>SUR. 22-199<br/>SUR. 31-24<br/>SUR. 35-118<br/>LOT 24-170<br/>LND. 50-1<br/>LND. 51-47</p>                 |  |



TOD  
1902-  
14444

N

SEC. 24

SEC. 23

SEC. 29

REVISOR  
7-27-2018  
D. VENTURA

\*NOTE: RONALD MOTTER DECEASED THE 10.002 AC. TRACT (DB 736-17, LND. 47-88) BEFORE ACQUIRING THE 0.351 AC. TRACT (DB 746-845, LND. 47-35) - TITLE PROBLEM - D. VENTURA 9/12/2003