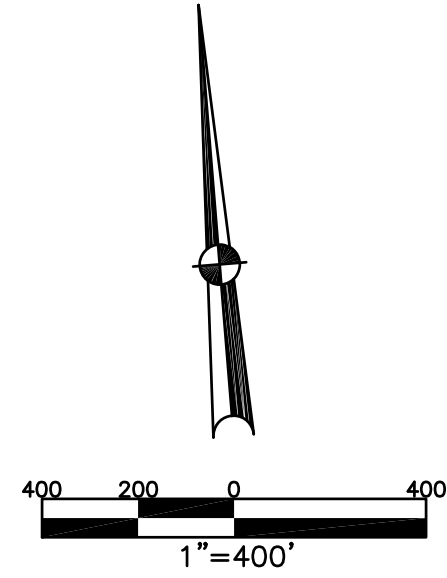


BROWN TOWNSHIP  
MIAMI COUNTY, OHIO

SECTION 23 TOWN 2 RANGE 11

PARCEL NUMBER  
B04-\_\_\_\_\_

PLAT 19



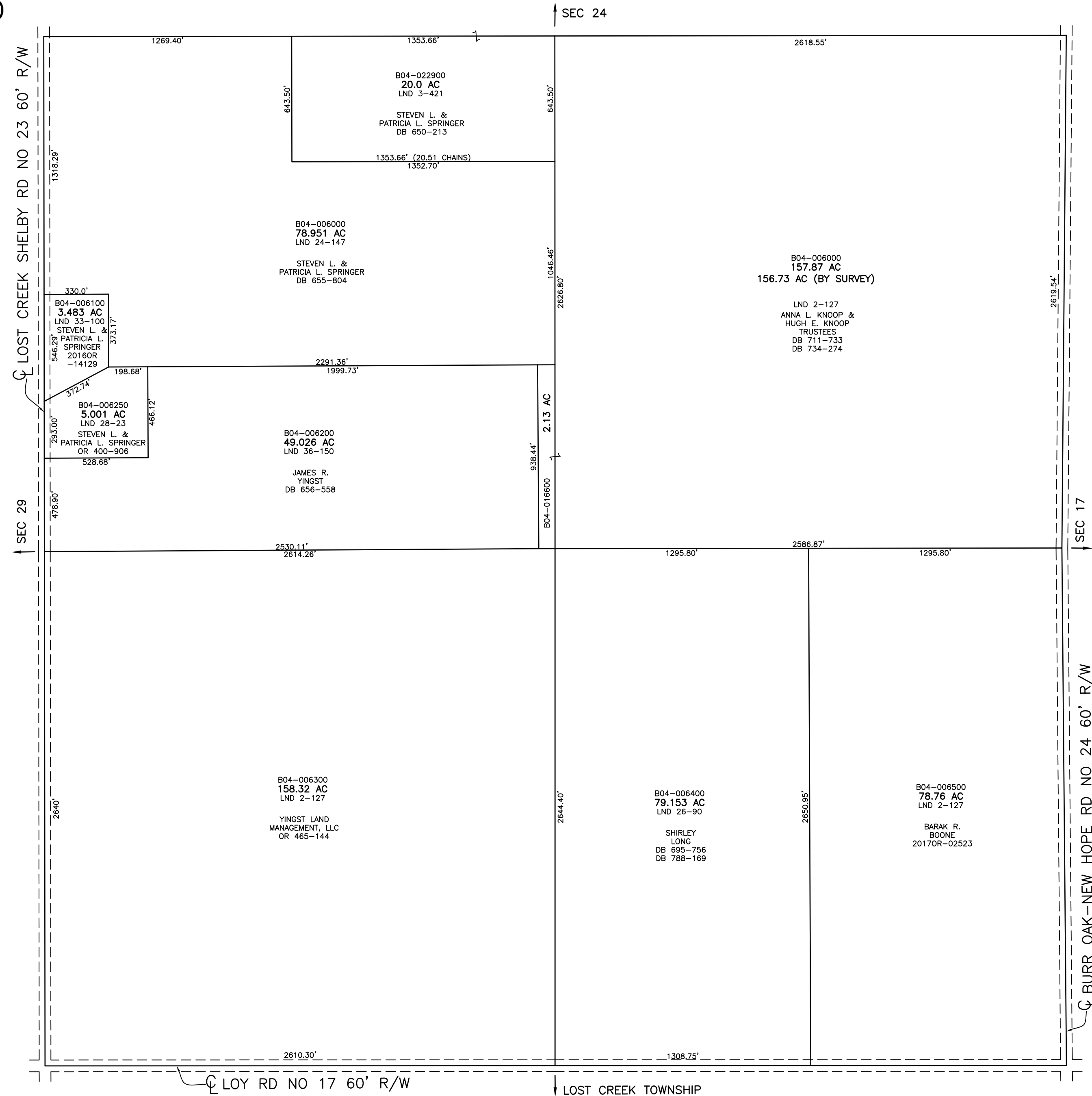
ABBREVIATION LEGEND	
2014OR-07759	= RECORDER'S DOCUMENT NUMBER
OR 257-619	= OFFICIAL RECORD 257 PAGE 619
D.B. 613-172	= DEED BOOK 613, PAGE 172
REC. 15-72	= RECORDER'S PLAT BOOK 15, PAGE 72
LND. 33-15	= LAND SURVEY VOLUME 33, PAGE 15
LOT 19-12	= LOT SURVEY VOLUME 19, PAGE 12
R.R. 8-29	= ROAD RECORD VOLUME 8, PAGE 29
R/W	= RIGHT OF WAY
CL	= CENTERLINE
AC.	= ACRES
TWP.	= TOWNSHIP
TR.	= TRACT
②	= LOT CREATED BY RECORDER'S PLAT

LINE LEGEND	
	Blow-up Boundary
	Property Line
	Lot Split Line
	Section Line
	Centerline
	Right-of-Way Line
	Corporation Line

SURVEY INDEX	
NORTHEAST QUARTER	
LND 2-127	
SOUTHEAST QUARTER	
LND 2-127	
LND 26-90	
SOUTHWEST QUARTER	
LND 2-127	
NORTHWEST QUARTER	
LND 2-127	
LND 3-421	
LND 24-147	
LND 28-23	
LND 33-100	
LND 36-150	



PREPARED BY: MIAMI COUNTY ENGINEER'S MAP DEPARTMENT  
PAUL F. HUELSKAMP, P.E., P.S., COUNTY ENGINEER  
DATE: OCTOBER 27, 2020 IMG  
REVISED: October 29, 2020 IGRFFIN