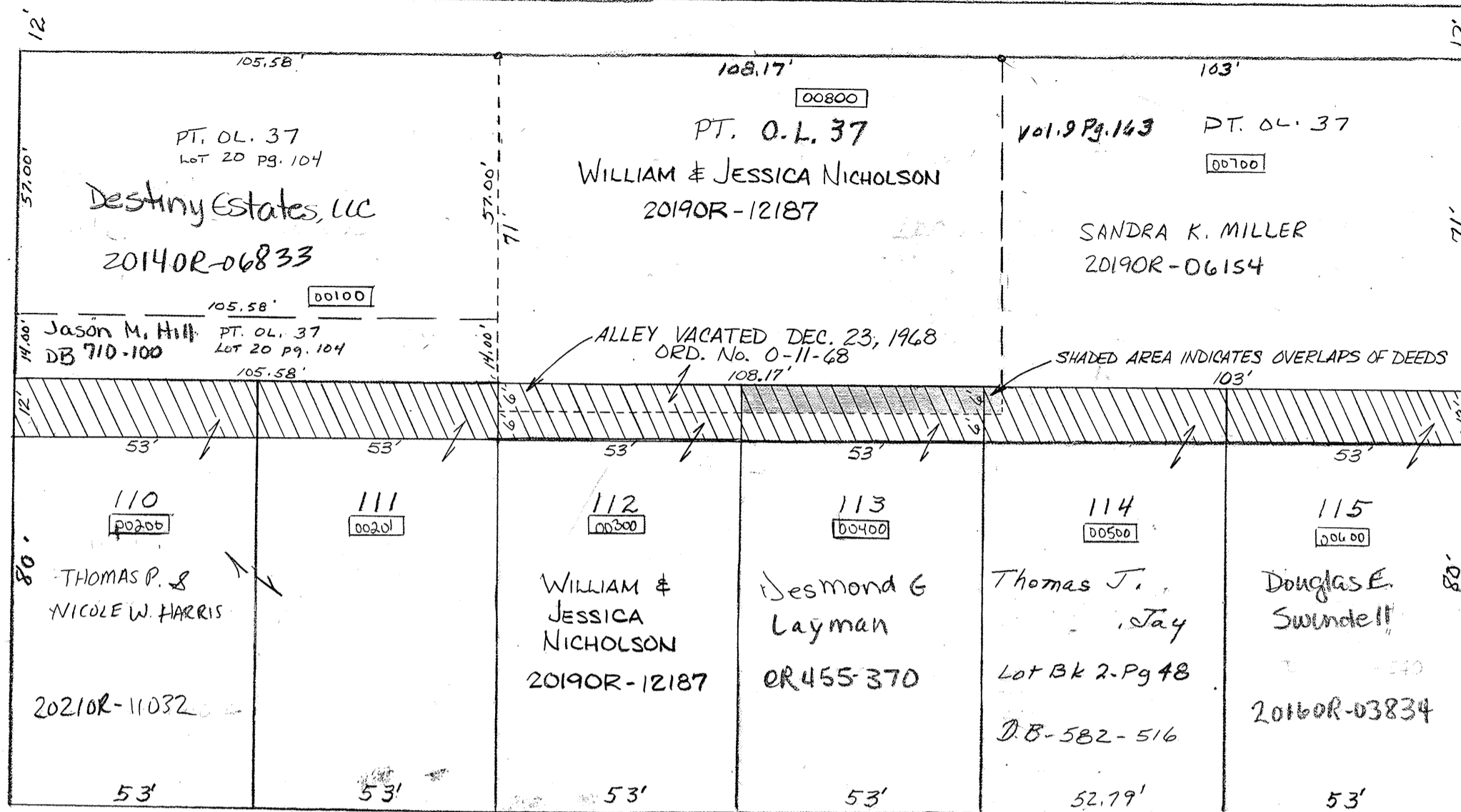


BRADFORD CORP.

PLAT NO 45
Scale 1 Inch = 30 Feet

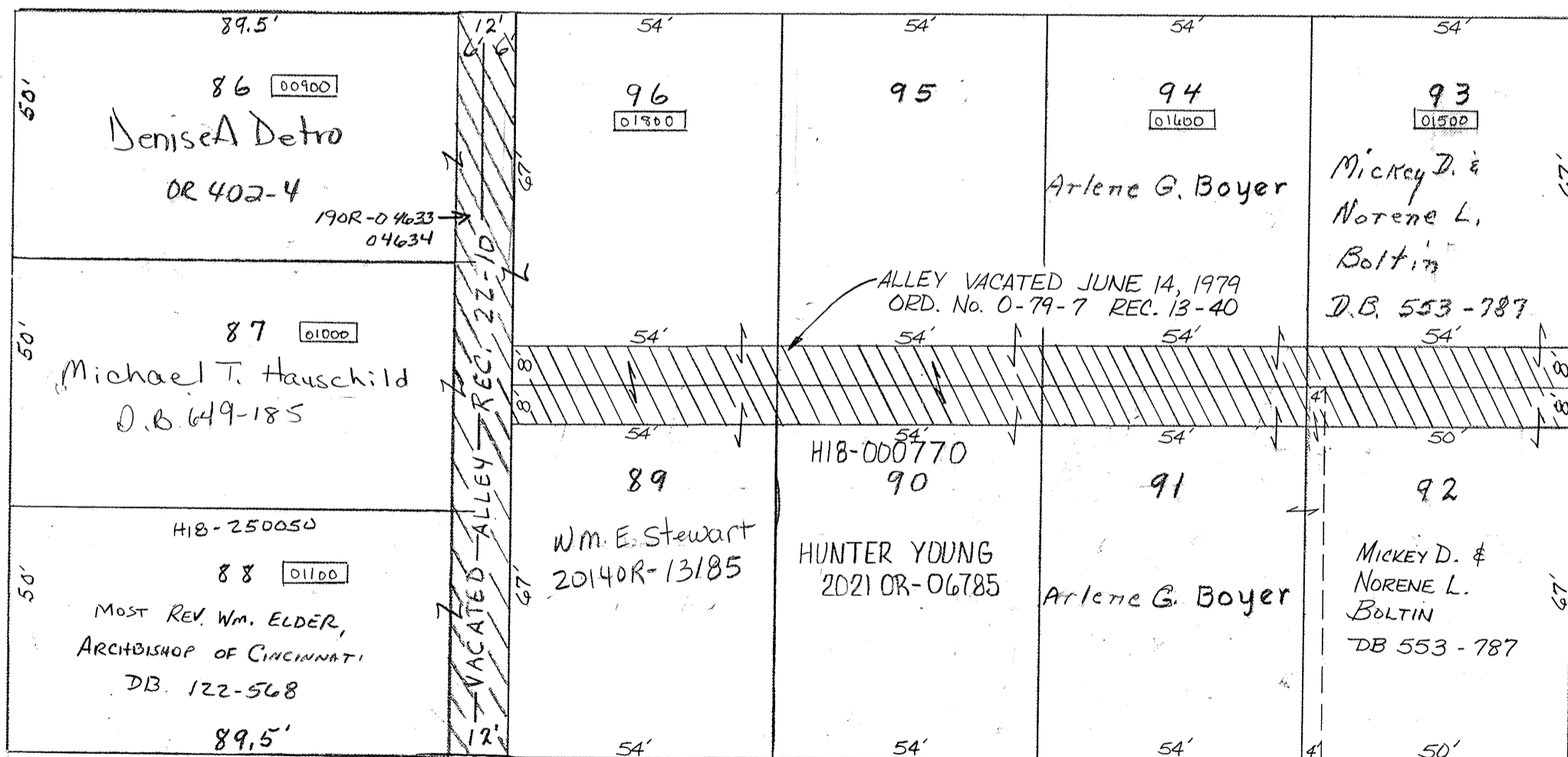
PARCEL NUMBER
H18-

CLAY STREET 55'



Lots 86 THRU 115 - Rec. Bk. 1, Pg. 233 & 234
OUTLOT 37 - Rec. Bk. 2, Pg. 230
LOTS 484 THRU 489 - Rec. Bk. 3, Pg. 46

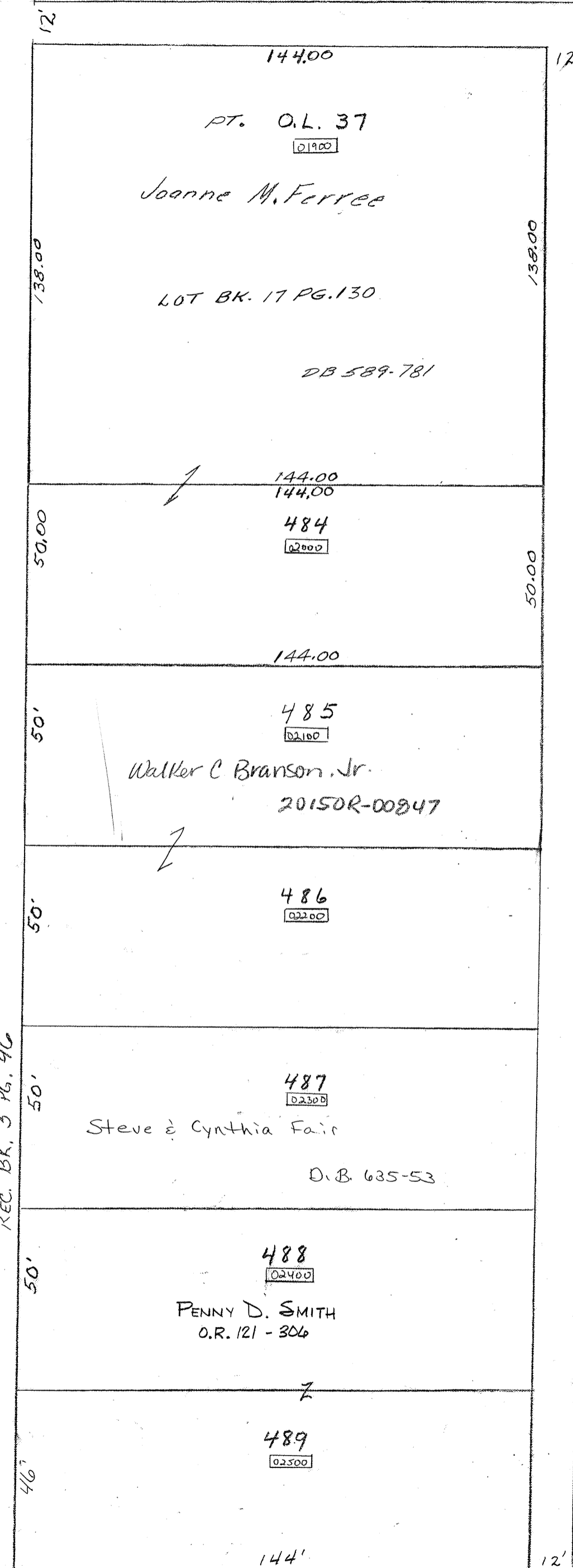
PEARL STREET 55'



VINE STREET "OLD" 55'
OAKWOOD

LIBERTY STREET 55'

REC. BK. 3 PG. 46



MILDRED AVENUE 40'

REVISED!
6-23-21
NMC