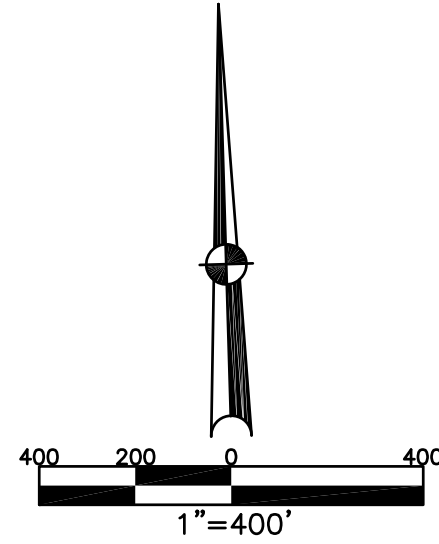


BETHEL TWP.
MIAMI COUNTY, OHIO



ABBREVIATION LEGEND	
2014OR-07759	= RECORDER'S DOCUMENT NUMBER
OR 257-619	= OFFICIAL RECORD 257 PAGE 619
D.B. 613-172	= DEED BOOK 613, PAGE 172
REC. 15-72	= RECORDER'S PLAT BOOK 15, PAGE 72
LND. 33-15	= LAND SURVEY VOLUME 33, PAGE 15
LOT 19-12	= LOT SURVEY VOLUME 19, PAGE 12
R.R. 8-29	= ROAD RECORD VOLUME 8, PAGE 29
R/W	= RIGHT OF WAY
C	= CENTERLINE
AC.	= ACRES
TWP.	= TOWNSHIP
TR.	= TRACT
②	= LOT CREATED BY RECORDER'S PLAT

LINE LEGEND	
	Blow-up Boundary
	Property Line
	Lot Split Line
	Section Line
	Centerline
	Right-of-Way Line
	Corporation Line

SURVEY INDEX	
NORTHEAST QUARTER	
LND. 2-152	R.S. 73
LND. 3-2	
LND. 7-116	
LND. 12-116	
LND. 44-189	
LND. 47-182	
LND. 56-103	
SOUTHEAST QUARTER	
SOUTHWEST QUARTER	
LND. 2-152	REC. 17-55
LND. 3-2	
LND. 14-190	
LND. 20-85	
LND. 24-9	
LND. 34-104	
LND. 42-120	
LND. 43-134	
NORTHWEST QUARTER	
LND. 2-152	REC. 17-55
LND. 3-2	
LND. 14-190	
LND. 20-85	
LND. 24-9	
LND. 34-104	
LND. 42-120	
LND. 43-134	
LND. 45-197	
LND. 46-195	

SECTION 15 TOWN 2 RANGE 9

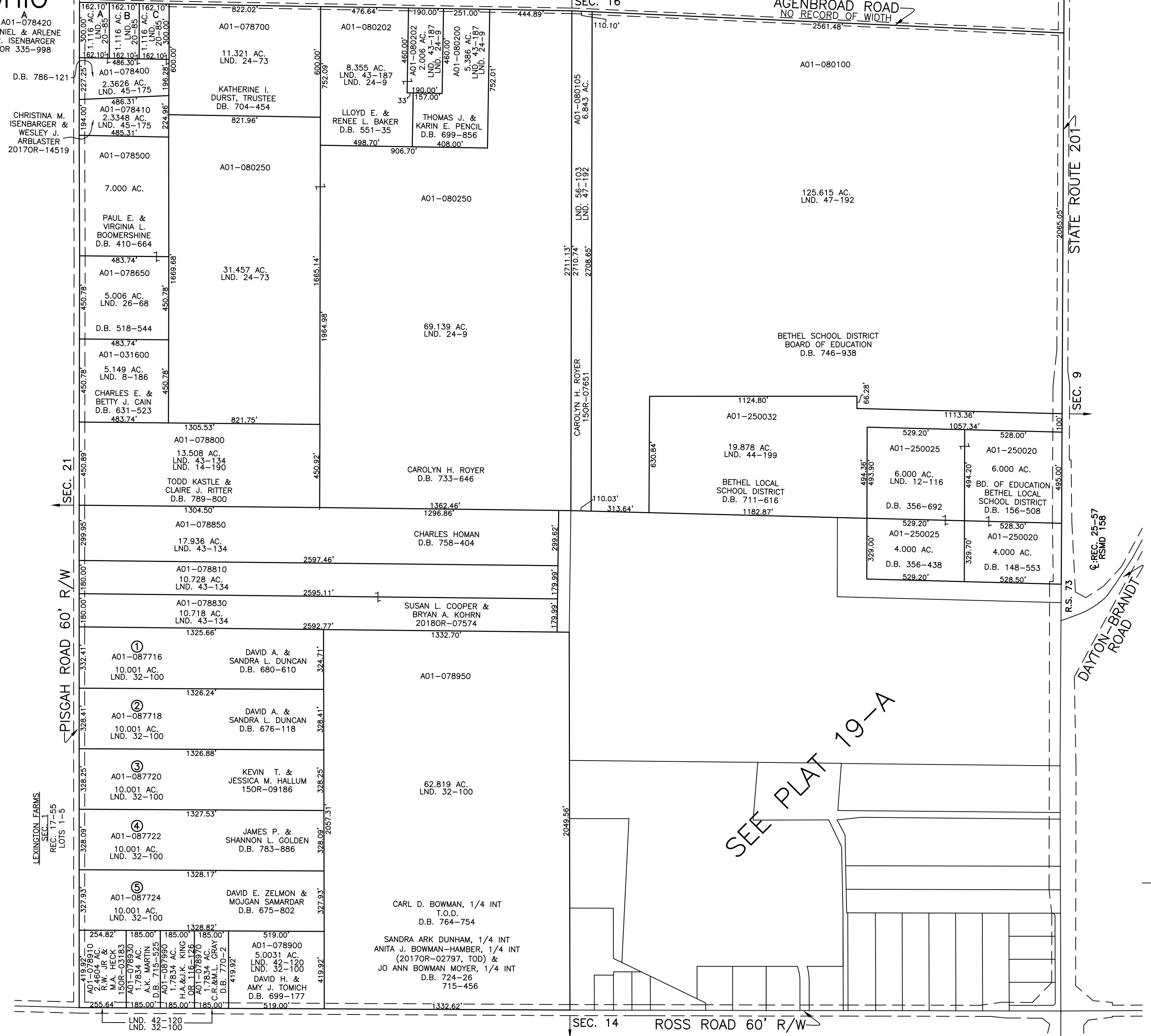
PARCEL NUMBER
A01-000000

PLAT 19

A
A01-078420
DANIEL & ARLENE
R. ISENBERGER
OR 335-998

B
A01-078405
2017OR-12885

C
A01-078430
D.B. 585-227



PREPARED BY: MIAMI COUNTY ENGINEER'S MAP DEPARTMENT
PAUL P. HUELSKAMP, P.E., P.S., COUNTY ENGINEER
DATE: MARCH 21, 2016 MB

REVISED: June 21, 2018 CHENCHEY