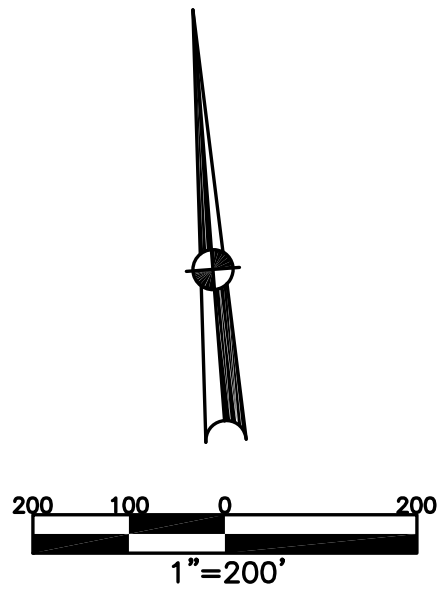


BETHEL TWP.
MIAMI COUNTY, OHIO

SECTION 1 TOWN 2 RANGE 9
SOUTHWEST QUARTER

PARCEL NUMBER
A01-_____

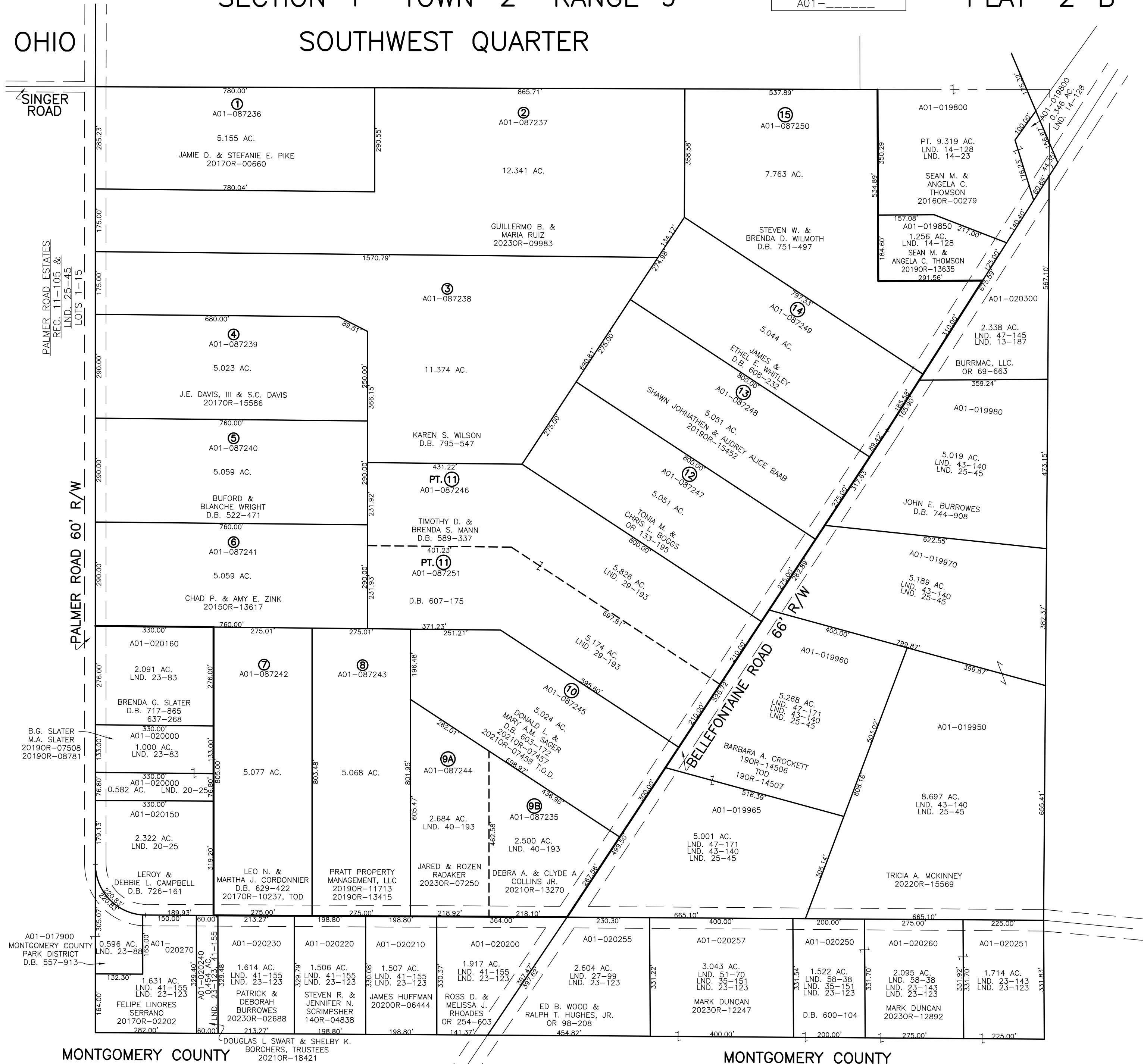
PLAT 2-B



ABBREVIATION LEGEND		
20140R-07759	=	RECORDER'S DOCUMENT NUMBER
OR 257-619	=	OFFICIAL RECORD 257 PAGE 619
D.B. 613-172	=	DEED BOOK 613, PAGE 172
REC. 15-72	=	RECORDER'S PLAT BOOK 15, PAGE 72
LND. 33-15	=	LAND SURVEY VOLUME 33, PAGE 15
LOT 19-12	=	LOT SURVEY VOLUME 19, PAGE 12
R.R. 8-29	=	ROAD RECORD VOLUME 8, PAGE 29
R/W	=	RIGHT OF WAY
CL	=	CENTERLINE
AC.	=	ACRES
TWP.	=	TOWNSHIP
TR.	=	TRACT
②	=	LOT CREATED BY RECORDER'S PLAT

LINE LEGEND	
	Blow-up Boundary
	Property Line
	Lot Split Line
	Section Line
	Centerline
	Right-of-Way Line
	Corporation Line

SURVEY INDEX		
LND. 3-117	LND. 27-99	REC. 11-105
LND. 4-23	LND. 29-193	
LND. 13-187	LND. 35-151	
LND. 14-23	LND. 40-193	
LND. 14-128	LND. 41-155	
LND. 20-25	LND. 43-140	
LND. 23-83	LND. 47-145	
LND. 23-88	LND. 47-171	
LND. 23-123	LND. 51-70	
LND. 23-143	LND. 58-38	
LND. 25-45		



PREPARED BY: MIAMI COUNTY ENGINEER'S MAP DEPARTMENT
PAUL P. HUELSKAMP, P.E., P.S., COUNTY ENGINEER
DATE: SEPTEMBER 22, 2015 MB
REVISED: November 22, 2023 MStorms

MONTGOMERY COUNTY
DOUGLAS L. SWART & SHELBY K. BORCHERS, TRUSTEES
2021OR-18421
MONTGOMERY COUNTY