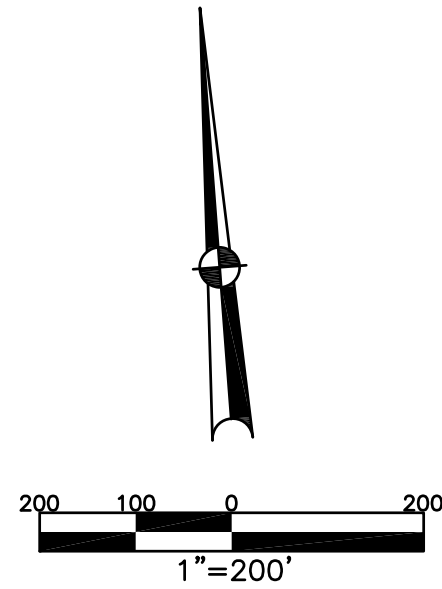


BETHEL TWP.  
MIAMI COUNTY, OHIO

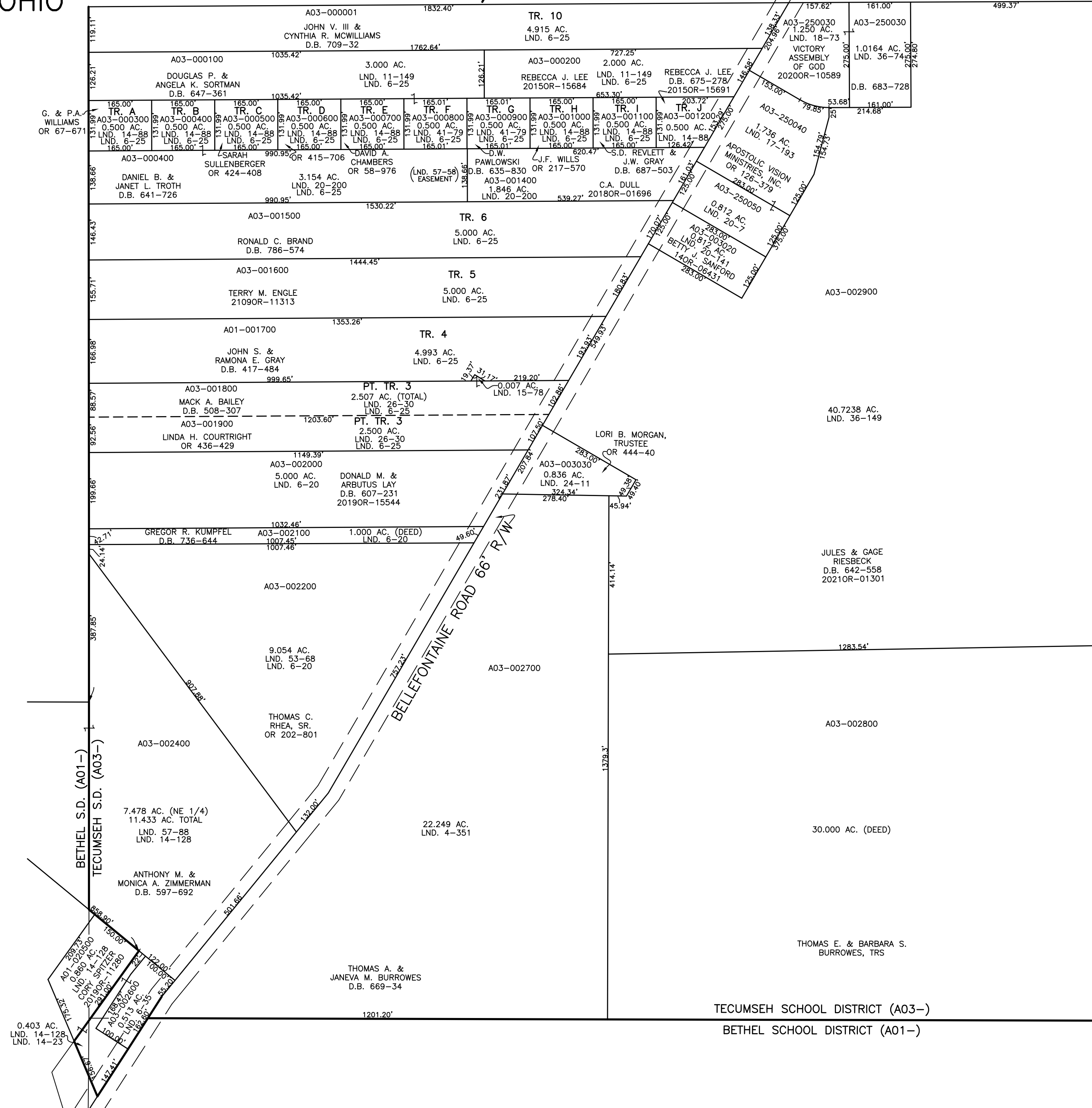
SECTION 1 TOWN 2 RANGE 9  
NE 1/4

PARCEL NUMBER  
A01-  
A03-

PLAT 2-A



ABBREVIATION LEGEND		
2014OR-07759	= RECORDER'S DOCUMENT NUMBER	
OR 257-619	= OFFICIAL RECORD 257 PAGE 619	
D.B. 613-172	= DEED BOOK 613, PAGE 172	
REC. 15-72	= RECORDER'S PLAT BOOK 15, PAGE 72	
LND. 33-15	= LAND SURVEY VOLUME 33, PAGE 15	
LOT 19-12	= LOT SURVEY VOLUME 19, PAGE 12	
R.R. 8-29	= ROAD RECORD VOLUME 8, PAGE 29	
R/W	= RIGHT OF WAY	
CL	= CENTERLINE	
AC.	= ACRES	
TWP.	= TOWNSHIP	
TR.	= TRACT	
Ⓢ	= LOT CREATED BY RECORDER'S PLAT	
LINE LEGEND		
	Blow-up Boundary	
	Property Line	
	Lot Split Line	
	Section Line	
	Centerline	
	Right-of-Way Line	
	Corporation Line	
SURVEY INDEX		
LND. 4-351	LND. 20-7	
LND. 6-20	LND. 20-141	
LND. 6-25	LND. 20-200	
LND. 6-35	LND. 24-11	
LND. 11-149	LND. 26-30	
LND. 14-23	LND. 36-74	
LND. 14-88	LND. 36-149	
LND. 14-128	LND. 41-79	
LND. 15-78	LND. 53-68	
LND. 17-193	LND. 57-58	
LND. 18-73	LND. 57-88	



PREPARED BY: MIAMI COUNTY ENGINEER'S MAP DEPARTMENT  
PAUL P. HUELSKAMP, P.E., P.S., COUNTY ENGINEER  
DATE: SEPTEMBER 22, 2015 MB  
REVISED: January 26, 2021 CSHOUP