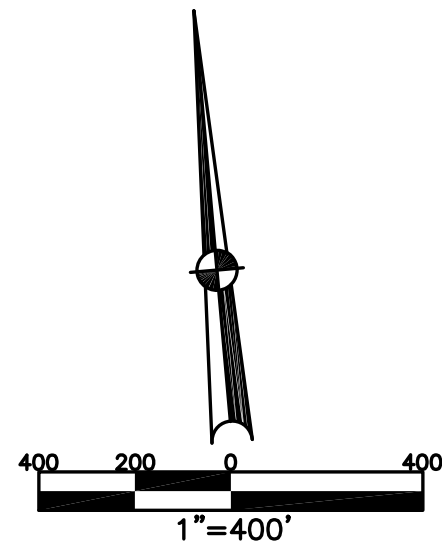


BETHEL TWP.
MIAMI COUNTY, OHIO

FRACTIONAL
SECTION 33 TOWN 2 RANGE 9

PARCEL NUMBER
A01-_____

PLAT 37



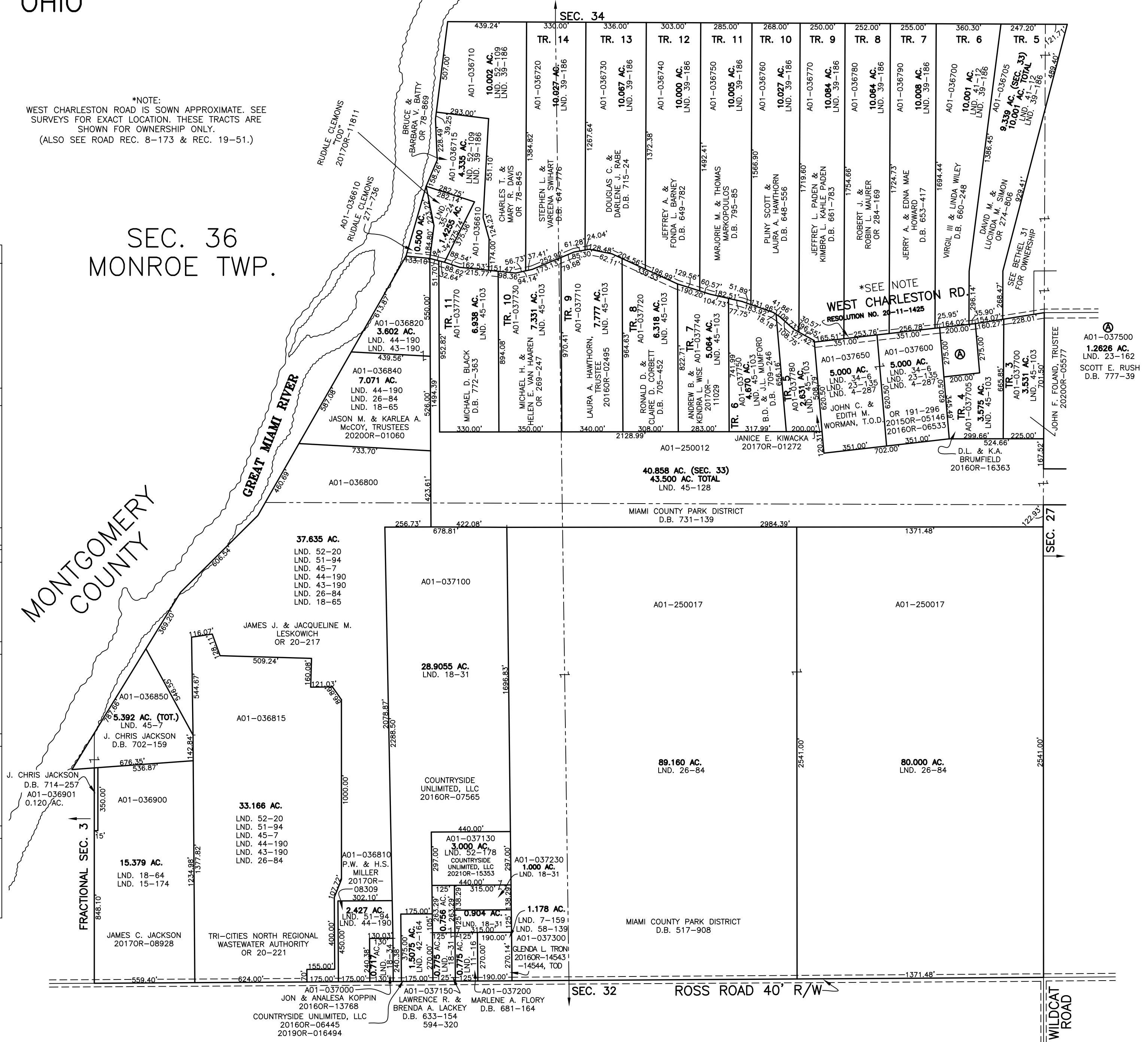
*NOTE:
WEST CHARLESTON ROAD IS SHOWN APPROXIMATE. SEE
SURVEYS FOR EXACT LOCATION. THESE TRACTS ARE
SHOWN FOR OWNERSHIP ONLY.
(ALSO SEE ROAD REC. 8-173 & REC. 19-51.)

SEC. 36
MONROE TWP.

ABBREVIATION LEGEND	
2014OR-07759	= RECORDER'S DOCUMENT NUMBER
OR 257-619	= OFFICIAL RECORD 257 PAGE 619
D.B. 613-172	= DEED BOOK 613, PAGE 172
REC. 15-72	= RECORDER'S PLAT BOOK 15, PAGE 72
LND. 33-15	= LAND SURVEY VOLUME 33, PAGE 15
LOT 19-12	= LOT SURVEY VOLUME 19, PAGE 12
R.R. 8-29	= ROAD RECORD VOLUME 8, PAGE 29
R/W	= RIGHT OF WAY
CL	= CENTERLINE
AC.	= ACRES
TWP.	= TOWNSHIP
TR.	= TRACT
Ⓢ	= LOT CREATED BY RECORDER'S PLAT

LINE LEGEND	
	Blow-up Boundary
	Property Line
	Lot Split Line
	Section Line
	Centerline
	Right-of-Way Line
	Corporation Line

SURVEY INDEX	
NORTHEAST QUARTER	
LND. 4-287	RD. REC. 8-173
LND. 23-135	REC. 19-51
LND. 23-162	
LND. 34-6	
LND. 39-186	
LND. 40-21	
LND. 41-12	
LND. 45-103	
LND. 45-128	
SOUTHEAST QUARTER	
LND. 26-84	
LND. 45-128	
SOUTHWEST QUARTER	
LND. 7-159	LND. 43-190
LND. 11-16	LND. 44-190
LND. 15-174	LND. 45-7
LND. 18-31	LND. 45-128
LND. 18-34	LND. 51-94
LND. 18-64	LND. 52-20
LND. 18-65	LND. 52-178
LND. 26-84	LND. 58-139
LND. 42-164	
NORTHWEST QUARTER	
LND. 4-287	LND. 45-103
LND. 23-135	LND. 45-128
LND. 23-162	RD. REC. 8-173
LND. 34-6	REC. 19-51
LND. 39-186	
LND. 40-21	
LND. 41-12	



PREPARED BY: MIAMI COUNTY ENGINEER'S MAP DEPARTMENT
PAUL P. HUELSKAMP, P.E., P.S., COUNTY ENGINEER
DATE: DECEMBER 31, 2015 MB
REVISED: September 3, 2021 APALMER