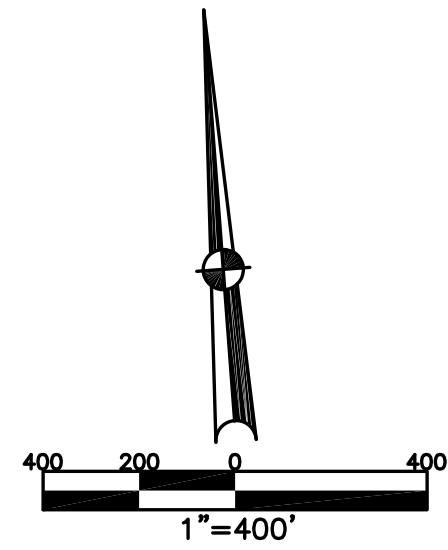


BETHEL TWP.
MIAMI COUNTY, OHIO

SECTION 32 TOWN 2 RANGE 9

PARCEL NUMBER
A01-038580

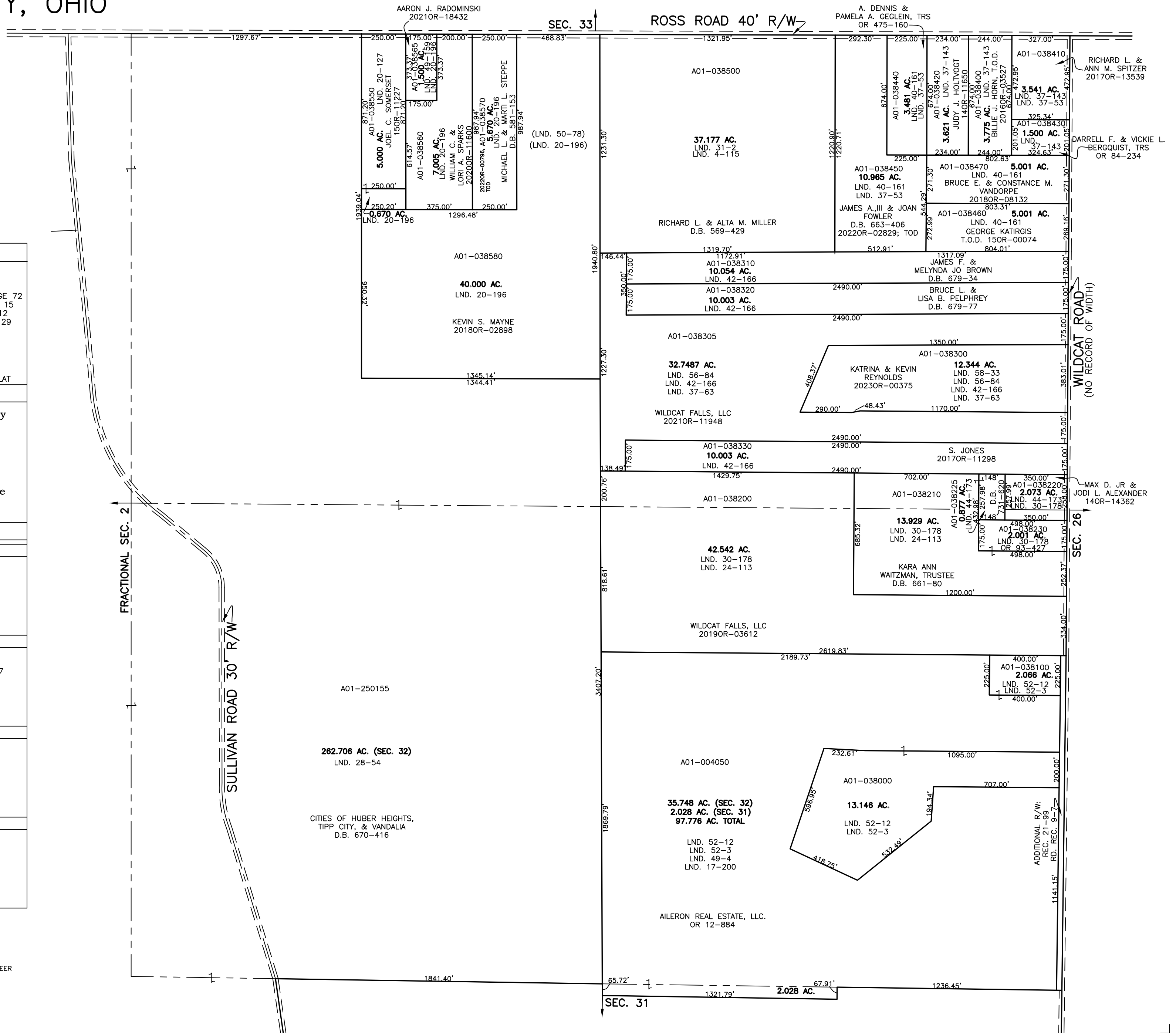
PLAT 36



ABBREVIATION LEGEND	
2014OR-07759	= RECORDER'S DOCUMENT NUMBER
OR 257-619	= OFFICIAL RECORD 257 PAGE 619
D.B. 613-172	= DEED BOOK 613, PAGE 172
REC. 15-72	= RECORDER'S PLAT BOOK 15, PAGE 72
LND. 33-15	= LAND SURVEY VOLUME 33, PAGE 15
LOT 19-12	= LOT SURVEY VOLUME 19, PAGE 12
R.R. 8-29	= ROAD RECORD VOLUME 8, PAGE 29
R/W	= RIGHT OF WAY
CL	= CENTERLINE
AC.	= ACRES
TWP.	= TOWNSHIP
TR.	= TRACT
Ⓢ	= LOT CREATED BY RECORDER'S PLAT

LINE LEGEND	
	Blow-up Boundary
	Property Line
	Lot Split Line
	Section Line
	Centerline
	Right-of-Way Line
	Corporation Line

SURVEY INDEX	
NORTHEAST QUARTER	
LND. 4-115	LND. 44-173
LND. 24-113	LND. 56-84
LND. 30-178	LND. 58-33
LND. 31-2	
LND. 37-53	
LND. 37-63	
LND. 37-143	
LND. 40-161	
LND. 42-166	
SOUTHEAST QUARTER	
LND. 17-200	REC. 21-99
LND. 24-113	RD. REC. 9-7
LND. 30-178	
LND. 44-173	
LND. 49-4	
LND. 52-3	
LND. 52-12	
SOUTHWEST QUARTER	
LND. 28-54	
NORTHWEST QUARTER	
LND. 3-227	
LND. 3-345	
LND. 3-431	
LND. 20-127	
LND. 20-196	
LND. 28-54	
LND. 49-156	
LND. 50-78	



PREPARED BY: MIAMI COUNTY ENGINEER'S MAP DEPARTMENT
PAUL P. HUELSKAMP, P.E., P.S., COUNTY ENGINEER
DATE: NOVEMBER 12, 2015 MB
REVISED: January 12, 2023 JVINCENT